

Federal aid survey cards to be brought home by students

All students enrolled in the Sierra Sands Unified School District will be bringing home a parent-pupil survey card to be filled out and signed by a parent or guardian of the student.



Women's Week . . .

(Continued from Page 1) requirement will be offered for participation in this and all other activities of Federal Women's Program Week.

FALL AND HOLIDAY FASHIONS were on display at the first Military Officers' Wives club luncheon of the year on Sept. 15 at the Commissioned Officers' Mess.

SHOWBOAT MOVIE RATINGS

The objective of the ratings is to inform parents about the suitability of movie content for viewing by their children.

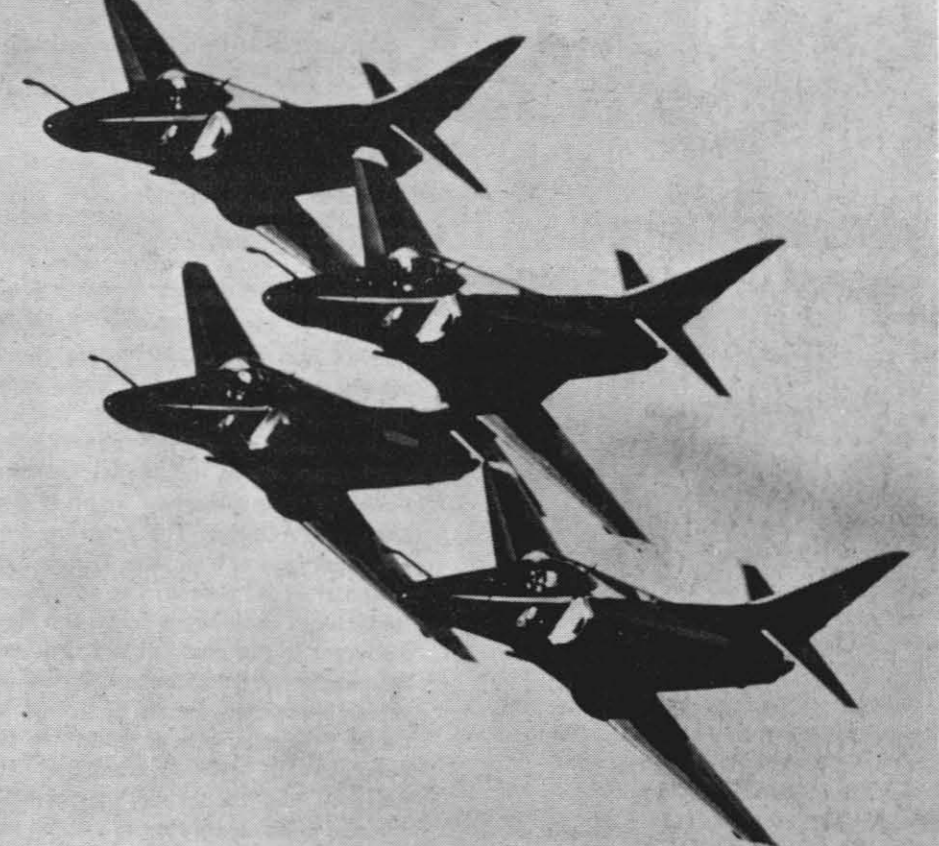
- FRIDAY: 'GRAVY TRAIN' (96 Min.) Stacy Keach, Fred Forrest (Action Comedy) The story of an armored car robbery and the consequences that follow. (PG) 3 OCT.

Pay raise set at 5% for civilian, military personnel

Members of the House of Representatives on Wednesday voted 278 to 113 to kill a resolution that would have raised the pay of all Federal employees and military personnel by 8.66 per cent, thus upholding the 5 per cent increase recommended by President Gerald Ford.

nwc rocketeer Blue Angels will be feature of air show part of Navy's 200th anniversary fete

The Blue Angels — the celebrated flight demonstration team of the U.S. Navy — will be featured during an air show at the Naval Air Facility on Monday, Oct. 13, as part of the Naval Weapons Center's observance of the U.S. Navy's 200th anniversary.



THE BLUE ANGELS' TRADEMARK — The diamond formation is recognized as the trademark of the Blue Angels throughout the world. This formation illustrates through teamwork and practice, the beauty and grace that can be achieved in formation flying.

Special sale slated

Navy Exchanges, Commissaries and Ship's Stores will celebrate the Navy's 200th birthday with a special "Superstar" sale featuring savings up to 50 per cent on selected merchandise.

Happenings around NWC

The final performance of "Cactus Flower," the laugh-filled Abe Burrows comedy, is scheduled tonight at the Commissioned Officers' Mess, beginning at 8:30.

Opportunities . . .

For information regarding duties of the above position, contact Betty Geisler, Ph. 2657.

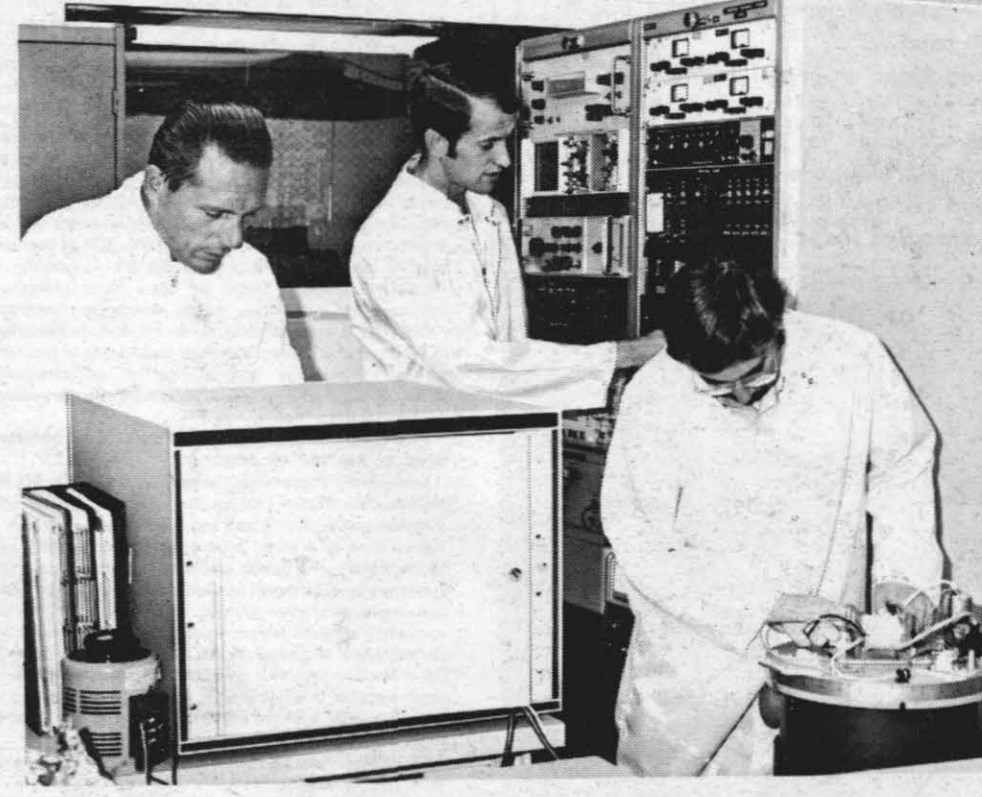
From: \_\_\_\_\_ To: \_\_\_\_\_ PLACE STAMP HERE

Fed'l Women's Program Week slated Oct. 6-10

All NWC employees are reminded that next week has been officially designated Federal Women's Program Week in observance of Women's Equality Day and International Women's Year.

Gyro/accelerometer test station certified by Fleet Missile Systems Analysis, Evaluation Gp.

Recently, a gyro/accelerometer test station built by Forrest Allred, a mechanical engineer in the Control Design Branch of the Engineering Department's Product Design Division, was certificated by the Fleet Missile Systems Analysis and Evaluation Group (FMSAEG) from Corona.



GYRO/ACCELEROMETER CERTIFIED — Forrest Allred (c.), builder of the newly certified gyro/accelerometer test station now located in the Solid State building at Michelson Laboratory, inspects the machine with its designers—Jack Richer (l.) and Kurt Lantz.

Pick up medallions Sat.

Local residents who have already ordered copies of the commemorative medallion jointly honoring the nation's Bicentennial and the 200th birthday of the U.S. Navy are reminded that the medallions will be distributed on Saturday, from 1 to 4 p.m. at the Weapons Exhibit Center (next door to the Maturango Museum).





# Combined Federal Campaign under way at NWC

## GUIDELINE FOR DESIGNATING CFC CONTRIBUTIONS

The use of your CFC donations to support the work of the agencies described in this brochure can be determined by you. Such donations, less a small percentage (approximately .3 per cent) thereof for campaign expenses, are paid directly to the agencies you designate. You may wish to designate individual organizations within an agency or agencies and the percent of the total you want each to receive. Or you may wish to direct your donation to one or more agencies; thus you may designate the United Way of Indian Wells Valley, the National Health Agencies, or the International Service Agencies to receive your donation. Contributions not designated for specific use are automatically apportioned as follows:

United Way of Indian Wells Valley	75 per cent
National Health Agencies	15 per cent
International Service Agencies	10 per cent

Be sure your donation goes where you feel the needs are best served. Simply fill in the appropriate spaces on your CFC Contribution Form.

## United Way of Indian Wells Valley — Code 1

**American National Red Cross - 1a**  
1975 funds provided safety service equipment for the Indian Wells Valley community, materials for a new water safety program and first aid classes, and services to veterans.

**Boy Scouts of America - 1b**  
1975 funds supported the local professional scout executive (salary), services to the Desert District from the Southern Sierra Scout Council and training of volunteer leaders for 88 plus IWV Scouts, Cubs and Explorers.

**Camp Fire Girls - 1c**  
Indian Wells Valley funds used to enhance adult leadership in this "laboratory of living" through recruitment, training, encouragement, guidance, special events, and camp experiences.

**Children's Home Society - 1d**  
Arranged adoptions and provided pregnancy counseling and assistance in the local area in 1975, secured temporary foster homes for children in emergency situations.

**Children's Hospital of Los Angeles - 1e**  
Last year recorded 47 outpatient clinic visits and 9 hospital admissions for 45 days of care for children from China Lake and Ridgecrest.

**China Lake Mountain Rescue Group - 1f**  
1975 funds bought rescue equipment, supported costs of search/rescue operations in desert and High Sierra mountains, and defrayed costs of mountaineering safety classes.

**Desert Counseling Center - 1g**  
Offered parent-growth seminars, provided community education and assistance about alcoholism, consultative/referral services for ministers, and screening services for Help Line and One-to-One.

**Girl Scouts of America - 1h**  
Funding provided support for professional consultants working with adult volunteers in recruitment and maintenance of troops, and provided materials and services from the Kern County Council Service Center.

**Help Line - 1i**  
Responded to approximately 1,000 calls for assistance from citizens of Indian Wells Valley, Searles Valley, and Isabella areas. Conducted training for additional answering service volunteers.

**Homemaker Service of Indian Wells Valley - 1j**  
Provided over 5,000 hours of home care to the elderly, as substitute mothers, and in respite services to families with handicapped members.

**Indian Wells Valley Association for the Retarded - 1k**  
Promoted the general welfare of mentally retarded children and adults by providing a variety of educational, recreational, and training programs including an Activity Training Center for the Handicapped.

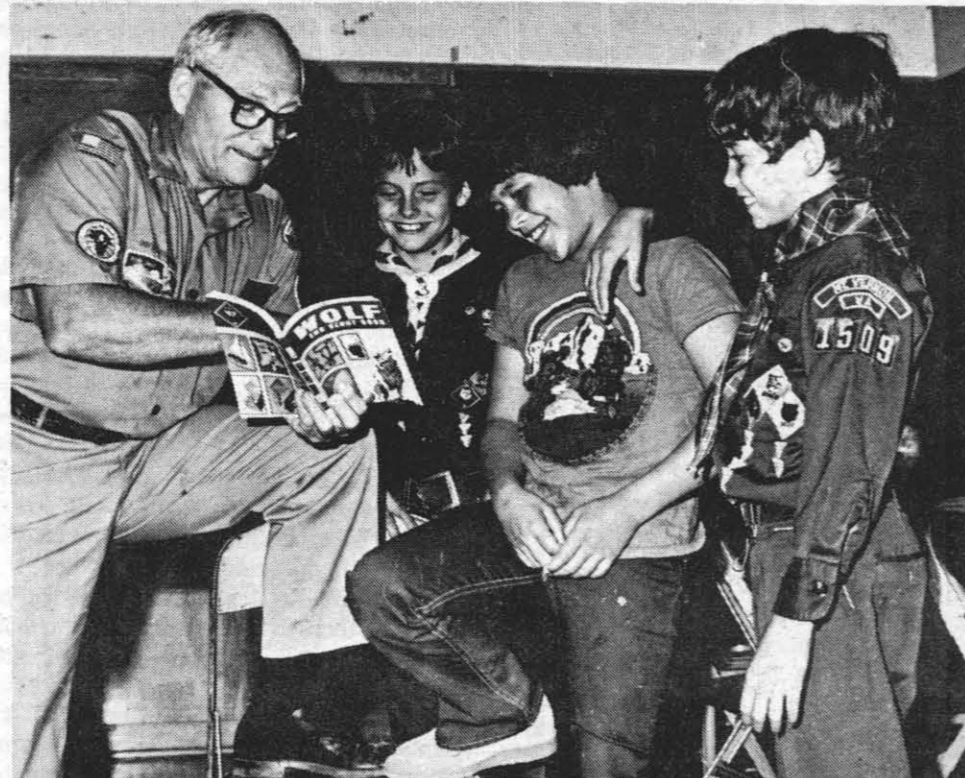
**Indian Wells Valley Campership Fund - 1l**  
Provided camp fees for 68 youngsters from the valley who were identified by teachers and other workers as benefiting from a week at camp.

**Legal Aid of Indian Wells Valley - 1m**  
As new member agency, covered lawyers' fees for 15 people during January-June 1975, supporting the rights of those who cannot afford legal services.

**One to One Program - 1n**  
During 1975 provided 11 children one-to-one and group experiences with caring adults, including monthly outings such as golfing, camping, and visiting local points of interest.

**Salvation Army - 1o**  
Provided emergency aid in IWV including food, lodging, medical assistance, transportation, transient aid, and statewide programs such as assistance to unwed mothers, alcohol rehabilitation, and prison visits.

**Traveler's Aid — International Social Service of America - 1p**  
Provided crisis intervention, emergency assistance, counseling, shelter, training, family reunion, custody, health and legal consultation, to anyone whose problem crossed local, state, or national borders. United Service Organization (USO) - 1q  
No statement.



**LEARNING ABOUT THE PROGRAM —** Norman Wiseman (l.), District Executive for the Southern Sierra Council, Boy Scouts of America, is shown pointing out some benefits of the Scouting program to three members of Cub Packs in the local area. They are (l.-r.) Stephen Bilsbury, Sean Villalba and Jamie Baker. A donation to the Combined Federal Campaign earmarked for the Boy Scouts of America will help to insure that boys like the trio above will be able to continue to reap the multitude of benefits that can be gained from the Scouting program.



## National Health Agencies — Code 2

**Birth Defects — March of Dimes - 2a**  
Supports research, medical services, education for prevention and treatment of birth defects. Program includes sickle cell disease and care of high-risk mothers and babies.

**Crippled Children and Adults — Easter Seals - 2b**  
This agency is the largest voluntary health agency providing direct care and treatment services to America's handicapped children and adults. 350,000 patients are served annually.

**The National Multiple Sclerosis Society - 2c**  
Supports research seeking cause, prevention and cure of MS. Multiple sclerosis is a disease afflicting the brain and spinal cord. Society chapters provide patient services.

**The National Society for the Prevention of Blindness - 2d**  
Protects your sight. It supports research, provides up-to-date information to eye-specialists and the public, and encourages early detection. Have your eyes examined regularly.

**American Cancer Society - 2e**  
Promotes conquest of cancer through research and public/professional education. Offers financial and direct supportive services to cancer patients.

**The American Heart Association - 2f**  
Fights heart and blood vessel diseases, America's leading cause of death, through programs of research, education, and community projects, all supported by your contributions.

**Muscular Dystrophy Association of America - 2g**  
Supports an international research program. It provides free clinical services to those afflicted by dystrophy and related neuromuscular diseases. All this, thanks to your generosity.

**The National Association for Mental Health - 2h**  
Through research, education, and social action, actively promotes better mental health and attacks the causes of mental illness, which affects one of every 10 Americans.

**The National Cystic Fibrosis Research Foundation - 2j**  
Extensive therapy helps control progression of this disease of children and young adults affecting lungs, pancreas, sweat glands—needed are cure, cause, and method detecting carriers.



**HELP WHEN IT'S NEEDED —** A Help Line volunteer worker talks to a caller who needs assistance — and needs it right now! This agency answered approximately 1,400 calls last year from local persons who wanted advice, assistance, or emergency treatment. A donation to CFC marked for distribution to Help Line will provide for the continuation of this needed service.

**IMPORTANT-PLEASE NOTE:**  
1. Code numbers have been assigned to CFC agencies and to each of their components. Should you choose to designate your pledge, merely insert the code number and the amount pledged for each designation. The amount of each portion designated should not exceed the total amount pledged. If the amount designated is less than the amount pledged, the balance will be distributed as announced for undesignated funds.  
2. To check amounts indicated, total pledge for year equals pledge per payday x 26; for military personnel, multiply total monthly pledge x 12.



**LEARNING TO SEW —** Pamela Fisher (center) is shown receiving instruction on how to operate a sewing machine at the Activity Center for the Handicapped, 101 Dorado St., in Wherry Housing. The teacher is Eunice Covert (at right). Barry Seales watches the operation. A major share of the money donated to the Indian Wells Valley Association for the Retarded will be used to help operate the Activity Center. Some of the other programs offered for the benefit of the handicapped at the Activity Center include other homemaking skills, arts and crafts, and gardening.



## International Service Agencies — Code 3

**Planned Parenthood — World Population - 3a**  
Support of voluntary family planning helps over 100 countries limit explosive population growth, which gives another aid programs a better chance to succeed.

**Care - 3b**  
Helps millions of hungry, destitute people around the world. Feeding, food-growing, self-help, medical and emergency aid save lives and provide the means for self-support.

**Project Hope - 3c**  
Teaches techniques of U. S. medical science of working side-by-side with doctors, nurses, and allied health personnel in developing areas of the world.

**International Rescue Committee - 3d**  
America's nonsectarian refugee agency helping people who escape from dictatorships; families persecuted for religious beliefs and race; and homeless and wounded war victims, especially children.

**The American Kor-Asian Foundation's - 3e**  
Self-help assistance program in health, education, agriculture and community development for the people of Korea is being expanded to needy areas of Southeast Asia.

**Save the Children Federation - 3f**  
Aids underprivileged children, their families and communities throughout the United States and overseas through self-help community development activities in health, education, nutrition and agriculture.

