

Remedial Driver Training Course To Begin June 1

Effective May 1, a Remedial Driver Training Course for persons convicted of traffic offenses aboard the Station, will be established and conducted by the Safety Department.

NOTS Instruction 5820.4 explains that the course will consist of six hours of instruction and will be presented in three two-hour sessions from 7 to 9 p.m. on Monday, Wednesday and Friday of the first full week of each month.

The two hours of instruction at the concluding session on Friday will be followed by a 30-minute written examination which all attendees will be required to take.

The first course will begin on Monday, June 1. All sessions will be held at the Safety Office, Building 465.

'Not Mandatory'

"Attendance at the course will not be mandatory in any case," the instruction says. "Attendees will be determined in the Traffic Court where, following conviction of a moving violation as distinguished from a parking violation, the offender will be given a choice of imposition of a period of suspension of his Station driving privilege or the voluntary attendance at, and successful completion of, the next convening Driver Training Course.

"Also, it may be anticipated that in some cases a suspension of Station driving privileges would be appropriate even though the offender voluntarily agreed to attend the course; in this type case, the offender's successful completion of the Remedial Course would simply lessen the period of suspension of the Station driving privilege.

Absence and Tardiness

The instruction also points out that "a failure to attend any session by a person voluntarily agreeing to attend will lead to that individual being cited back to the Traffic Court."

Code 25 Special!
4-Page Supplement
On Supply Dept.
Pages 5 Thru 8

New Officers Installed In Navy League Council



PAST NATIONAL PRESIDENT of the Navy League Frank Gard Jameson presents gavel to William B. Puckett, new president of the Indian Wells Valley Navy League Council. Observing presentation (l-r) are Leo R. Simonton, treasurer;

"J" Bibby, secretary; Capt. Charles Blenman, ComNOTS; VAdm. P. D. Stroop, ComNavAirPac; Rev. Robert M. Harvey, chaplain; Robert D. Millett, 1st vice president; and Nick T. Zissos, 2nd vice president.

Daylight Saving Starts Sunday

It's that time of year again when we set our clocks ahead one hour in the switch to Daylight Saving Time.

Sunday will be a 23-hour day in California. That's when Daylight Saving Time officially begins — at 2 a.m.

If you can't stay up that late it is suggested that you set your clocks ahead one hour before retiring Saturday night.

Wm. Puckett is New President of Council

One of the largest turnouts in local Navy League history, approximately 200 persons, were in attendance at the annual installation dinner Saturday evening which was highlighted by

talks by VAdm. P. D. Stroop, Capt. Charles Blenman Jr., the presentation of a \$1200 check, and the installation of officers by Frank Gard Jameson, past national president of the Navy League of the United States.

Here from La Jolla for the occasion, Jameson installed the following as new officers of the Indian Wells Valley Council: William B. Puckett, president, who succeeds G. L. Oldfield; Robert D. Millett, 1st vice president; Nick T. Zissos, 2nd vice president; "J" Bibby, secretary; Leo R. Simonton, treasurer; Rev. Robert M. Harvey, chaplain; and Vic Ellis, judge advocate.

Lauds Council Past national president Jameson cited the local Council as one of the most aggressive in Navy League affairs, even surpassing Councils of metropolitan areas.

This observation is based on my experience while national president during which I visited every Council in the Navy League with the exception of one, Jameson noted.

The 38-year-old industrialist, who at one time headed 14 different business ventures, flew 225,000 miles, mostly in his own plane, during his two years as unsalaried president of the Navy League.

VAdm. Stroop Speaker Guest speaker VAdm. P. D. Stroop, Commander, Naval Air Force, Pacific Fleet, echoed the praise bestowed on the Council by past national president Jameson.

He expressed the wish that

(Continued on Page 3)

Daylight saving time begins at 2 a.m. Sunday. Turn your clocks AHEAD one hour.

Artistic Div., Novice Class "Indian Wells," Ida S. Davis, first; "Wagons Ho," Esther Rowntree, first; "They All

ANNALS: Pansy, Evelyn Mayne; petunia, single, Marian Licwinko; iceland poppy, Lilah Harman; shirley poppy, Lilah Harman; other poppy, Hope Myers.

Sweet peas (vine type), Ruth Garrett; sweet peas (mixed), Ruth Garrett; Stock, Evelyn Mayne; yellow Calendula, Evelyn Mayne.

Perennial flowers: Snapdragon, Hope Myers; columbine, Marianne Kistler; dianthus, Mary Wickenden; other perennials, Marianne Kistler.

Dutch Iris, Ruth Garrett; tulips, Hope Myers; amaryllis, Hope Myers; ranunculus, Ruth Garrett; sparaxis, Ruth Garrett; daffodils, Marianne Kistler; other bulbs, Marianne Kistler.

Flowering Shrubs

Locust, Edna McKenry; other Doralee Smithson; foliage specimens, Marianne Kistler. Potted plants; indoor, under 6 inches, Doralee Smithson; over 6 inches, Ruth Garrett; foliage over 6 inches, Hope Myers.

Cacti, under 6 inches, Verna Wheeler; succulents, large, Pearl Hirsch; succulents, small, Verna Wheeler; succulents, large, Pearl Tallackson; small succulents collections, Alice Hirsch; large succulent collections, Verna Garrett.

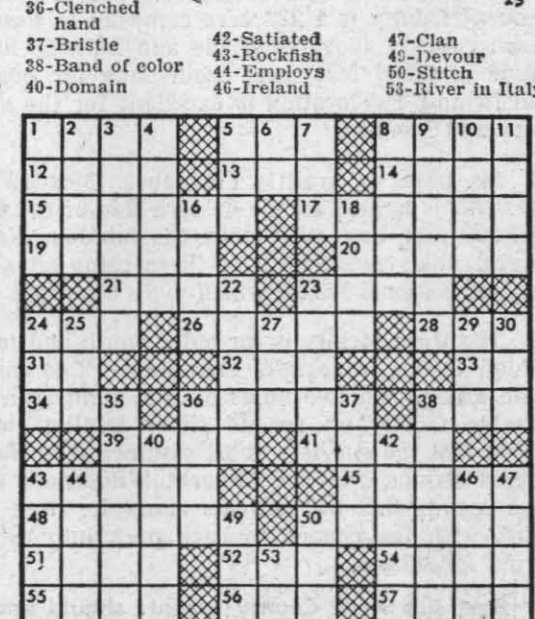
Green house specimens, Verna Wheeler; vegetable collection, Verna Wheeler; herb collection, Lilah Harman; bulb collection, Ruth Garrett; collection of cut branches, Jesse Waters; collection cut foliage, Ruth Garrett; grey foliage plants, Hazel Allason.

CROSSWORD PUZZLE

ACROSS
1-Cuts of meat
6-Church bench
8-Propel oneself through water
12-Sea in Asia
13-Macaw
14-Sarcasms
15-Vacation place
17-Expands
19-Dull finish
20-Deceits
21-Slave
23-Father
24-Distant
26-Doctrine
28-Speck
31-Paid notice
32-Quarrel
33-Sun god
34-Number
36-Confagration
38-Ocean
39-Great Lake
41-Remainder
43-Tricks
45-Biblical weeds
48-Landed property
50-Sarcasm
51-Girl's nickname
52-Simian
54-Heroic
55-Artificial alloy
56-Haul
57-Depression

DOWN
1-Damage
2-Region
3-Expert
4-Narrow openings
5-Man's nickname
6-Teutonic deity

Answer to Previous Puzzle
 ASP STAIR GAB
 EEL ARGE RIO
 SCARLET SEEDS
 NOTE AGREE
 TRES DESISTED
 RITTS PINE PD
 LNS TRAD TAN
 ES ORAD SPACE
 SECRETES ANTE
 LEAS TANK
 CHALK LAGGARD
 ALIS ENURE ROE
 PES DOPES DAN



Distr. by United Feature Syndicate, Inc.

For Use in Authorized Service Newspapers Only.

From _____

PLACE
STAMP
HERE

TO _____

CHAPLAIN'S MESSAGE

Living With Our Tensions

By CHAPLAIN MARK E. FITE



Pressure of these days cause tensions that cannot be ignored. We must live with them, and in order to resolve them it demands that we give careful attention to all things useful. In this attention however, we must consider the "side or after effects" of the strategy used in the solution.

Being quiet before God will help. Everyone needs this — some tragic results can be found when this is neglected. Nothing will settle your day, give a sane perspective, like setting aside for God a period in the day for quiet meditation.

Hard-headed businessmen are apt to think this impractical or nebulous. It definitely is not. Nothing can be more utilitarian in your busy day than this strategy.

A glass of muddy water if allowed to stay quiet awhile will become clear as crystal with the mud settled to the bottom — but it must be given time and quiet. Keep it stirred up and it remains muddy and congested.

Life is like that. It can get muddy, confused, congested and very tense. Thinking becomes foggy, distorted and dull. Matters that clamor for attention, demanding action push over one another. Tempers are heated with the certain results that efficiency is diminished and often in the words of the song "you always hurt the ones you love."

Relax! But this is the problem. How? Sit quiet. Let your chair hold you up — think and listen to God. Don't just be quiet for nothing, be quiet intelligently. Let your mind be occupied, try reading some from Psalm 1, 23, 37 or 46. Try talking the situation over with God in prayer. Don't be so concerned with the language of prayer, as with the fact that you talk to Him as you would a partner who has a deep interest in you, your home, your business — yes, your tensions.

Try this strategy. It has guaranteed results that are entirely reliable.

"—they that wait upon the Lord shall renew their strength; they shall mount up with wings as eagles; they shall run, and not be weary; they shall walk, and not faint" (Isaiah 40:31.)

PROMOTIONAL OPPORTUNITIES

Present Station employees are encouraged to apply for the positions listed below. Applications should be accompanied by an up-to-date Form 58. The fact that positions are advertised here does not preclude the use of other means to fill these vacancies.

Supervisory Stock Control Clerk, GS-5, PD 425005, Code 2573 — As supervisor of the Purchase Material Section, Receipt Control Branch, incumbent supervises the identification of all purchased material for the Station for inspection and delivery, the maintenance of contract and open order files, and the verification of invoices for payment by Navy Regional Finance Office for all BPA purchases.

Qualification Requirements: One year's experience in general office-clerical duties, and eighteen months' progressively responsible experience in the specific field in which the duties of this position are to be performed. Six months of this specialized experience requirement may be obtained in any field of supply and is to be considered "related."

Administrative Services Asst., GS-5, PD 225019 AmI, Code 2595 — Act as advisor and consultant in areas of personnel control, selection, assignment, training, on-board status, ceiling, position changes, incentive awards program, position classifications, security clearance requirements, etc., as related to Supply Department employees and billets.

Qualification Requirements: Either a full 4-year course in an accredited college or university leading to a bachelor's degree or three years experience in administrative, professional, or other responsible work. All applicants must have passed a current FSEE written examination.

Qualifications desired: Experience in personnel and/or pay functions and the ability to type with accuracy.

File applications for above with Pat Dattling, Bldg. 34, Room 28, Phone 72676. Deadline for filings is May 1.

NAVY OVERSEAS VACANCIES
Fire Prevention Engineer, GS-804-12, London, England, Detective, GS-083-7, Argentina, Newfoundland, Canada, Supervisory Placement Specialist, GS-212-9, Guantanamo Bay, Cuba.

File applications for above with Navy Overseas Employment Office (Atlantic) Hdqtrs., Potomac River Naval Command, Washington, D. C., 20390, on or before May 11.

'DESERT PHILOSOPHER'

Ever Hear a Fish Call?

By "POP" LOFINCK



Many people — especially newcomers — ask me — "where are good places to go for recreation."

So I'll start on a series of fishing - hunting - rock hounding, exploration for lost mines, etc.

I'll start with fishing because the stream fishing season opens in two weeks (May 2).

And I'll start with the Kern River Valley —Isabella Lake — because it's closest.

The community of Isabella is on the south end of the lake, Kernville on the north end.

SOME STATISTICS ABOUT THE LAKE

There is no better place to fish than in Lake Isabella and up the North fork of the Kern River eleven miles north of Kernville — to Johnsondale. And I'm not working for the Kern River Valley Chamber of Commerce. The gross pool — that means when the lake is full — has a surface area of 11,200 acres — 38 miles of shoreline — capacity 570,000 acre feet of water — so it's not a little thing. Eight and one-half miles long — 2 1/2 miles across at its widest point. The above figures from the U.S. Army Corps of Engineers.

Large catches of rainbow trout, bass, crappie, blue gill and catfish have been taken from the lake. Catches of 30,000 pounds have been checked in over some week ends.

You may fish from shore, rent a boat or bring your own. Launching facilities are provided by Parks and Recreation Department at many locations around the lake. The lake is open the year round to fishing for all species. No closed season. And there is no limit for crappie. All you can catch.

Crappie are a fine pan fish (altho some weigh as much as a pound each) — you fry them with bones down in the skillet and eat bones and all.

The kind of lure you use depends on the time of year — weather conditions —temperature of the water, etc.

The use of live bait is strictly prohibited — that's to keep carp out of the lake.

RECORD BASS AND RAINBOW TROUT

Record bass so far weighed 10 pounds 14 oz., a large mouth caught in August 1961.

Record trout so far weighed 8 1/2 pounds — rainbow — caught by a man from Ridgecrest about a month ago.

Some bluegill taken weigh 2 1/2 pounds. Some fish are warm water fish — go down deep to keep warm and come up near the surface when the weather gets warmer.

Bass are moving up into shallow water now — if spring time stays, good!

Bob Poor, year round Isabella resident, said they are having the best fishing since 1960.

You can rent a boat for \$5.00 a day—or a boat with 5 H.P. motor for \$10.50 a day. Or bring your own boat.

Kern River fishing is different (season opens next month). Use leaders as thin as one pound test and number 14 hooks.

There are many trailer parks and fine camping places — close to the lake or up the mountain away. And nice motels up the river.

JUST GET IN YOUR CAR AND GO!

There are many fine grocery markets and tackle stores, all around the lake — at reasonable prices. So the only preparation you need is to just get in your car and go!

You know, in Alaska there is great annual excitement and betting pools over the exact minute the ice will break in the Yukon River.

So the Lake Isabella Chamber of Commerce is sponsoring a very clever publicity campaign.

You guess what the acre feet of water will be in Lake Isabella at midnight of July 1, 1964. An acre foot is the amount of water it takes to cover one acre one foot deep.

This contest is open to everyone except local employees of the U. S. Army Corps of Engineers and their immediate families.

Any number of entries may be submitted by one person so long as each entry is accompanied by a \$1.00 donation to the Chamber of Commerce.

DEADLINE IS MIDNIGHT, JUNE 1

All entries must be in the hands of the Lake Isabella Chamber of Commerce Spring Runoff Committee or their authorized representatives by midnight of June 1, 1964 to be eligible.

There is one grand prize only—Six-hundred dollars (\$600) in U. S. Savings Bonds will be awarded to the winner. In case of a tie—which is very improbable—the prize will be equally divided.

The winner is the person whose entry shows an acre foot volume of the lake closest to the volume reported by the U. S. Army Corps of Engineers as of their regular midnight reading for July 1, 1964.

Winner will be announced at Lake Isabella on July 4, 1964.

Following are some Lake statistics which may help you with your guessing . . . GOOD LUCK!

Year	Acre Feet	Date	July 1 Storage
1954	90,775	June 9	68,240
1955	43,557	June 16	39,372
1956	283,023	June 30	282,874
1957	183,079	June 20	180,670
1958	455,162	June 28	449,700
1959	207,674	May 21	137,507
1960	119,252	May 18	80,296
1961	59,095	June 18	49,169
1962	173,675	June 28	173,070
1963	369,990	June 28	369,170

Bishop Furlong To Confirm 160 Here Sunday

The Most Reverend Philip J. Furlong, Auxiliary Bishop for Catholics in the U. S. Armed Forces, will give the Sacrament of Confirmation to nearly 160 children and adults at China Lake Sunday evening at the 5:30 p.m. Mass in the All-Faith Chapel.

Here from New York City where he was born and educated, Bishop Furlong will be honored at a reception immediately following the Confirmation Mass in the East Wing of the Chapel. Confirmandi, their parents and sponsors are urged to attend the affair.

A reception honoring the visiting prelate will be held Saturday evening, beginning at 6:30 p.m. at the Commissioned Officers Mess, with dinner to follow.

Those wishing to attend the dinner must make reservations through the office of Chaplain Joseph A. Costa at the Station Chapel.

Bishop Furlong's military affiliations include attendance at the Third Army Orientation Course, Command and General Staff School, Chaplain of the Eighth Regiment, New York Guard, National Chaplain of the Civil Air Patrol and Associate Member of the U. S. Aviation Cadet Selection Board.

Pacific Airlines Flight Schedule

(Effective April 26)
Flight 481
 Lv. Inyokern 6:30 a.m.—
 —Arr. LAX 7:26 a.m.
Flight 482
 Lv. LAX 9:20 p.m.—
 —Arr. Inyokern 10:10 p.m.



THE MOST REVEREND Philip J. Furlong, Auxiliary Bishop for Catholics in the U. S. Armed Forces, will give the Sacrament of Confirmation to nearly 160 children and adults at All-Faith Chapel Sunday at 5:30 p.m. Mass.

DIVINE SERVICES

- Christian Science (Chapel Annex)
 Morning Service—11 a.m.
 Sunday School—11 a.m.
- Protestants (All Faith Chapel)
 Morning Worship—8:30 and 11 a.m.
 Sunday School—9:30 a.m., Graves and Richmond elementary schools.
- Roman Catholic (All Faith Chapel)
 Holy Mass—7, 9:30 a.m., and 5:30 a.m. Sunday.
- 6 a.m. Monday through Friday, 8:30 a.m. Saturday.
- Confessions—8 to 8:25 a.m., 6 to 8:30 p.m. Saturday. Thursday before First Friday—4 to 5:30 p.m.
- BOIS Hebrew Services (East Wing All Faith Chapel)
 Every first and third Friday, 8:15 p.m.
- Unitarian Fellowship (Parish Hall)
 Fellowship Meeting—Sundays, 7:30 a.m.
 Sunday School—9:30 a.m.

The Rocketeer

Official Weekly Publication of the J-3 Naval Ordnance Test Station, China Lake, California
 Captain Charles Blumenthal, Jr., USN
 Station Commander
 "J-3" Bibby
 Public Information Officer
 Jack G. Rawland
 Editor-in-Chief
 Richard Greenberg
 Editor
 Susan Garr
 Associate Editor
 Frederick L. Richards
 Social Assignments

DEADLINES
 News Stories—Tues., 4:30 p.m.
 Photographs—Tues., 11:30 a.m.

Publications: Publications, Reports, Forms, Press, Service materials. All via airmail to 5. Monitors unless otherwise identified. Printer: NavyExos P-35. Revised July 1950 Office: 0 King St., Bldg. 00929. Phone—11354. 71655. /2082



SPORTS SLANTS

By CHUCK MANGOLD

For outdoor buffs who wish to introduce their families to campaign and outdoor life, the Kern County YMCA is offering one of the most comprehensive camping programs of any county organization — either public or private — for the summer.

Three camp facilities will be used by the Kern County YMCA to offer a wide range of types of camping. The main resident facility is a 222 acre campsite at Poso Heights in the ranch country above Glenville and Balance Rock. With an altitude of 5,000 feet, man made lake for boating, swimming, and fishing, the location is excellent for the activity of youngsters and families.

Six miles by trail is Portuguese Meadow primitive camp site. This is located on the eastern side of the Greenhorn Ridge at 7,000 feet, and over looks the fabulous Kern River Gorge several miles away. Both of these camp sites are adjacent to Sequoia National Forest which gives a camper "room to roam."

The third facility is for older youth and families who wish a high Sierra wilderness experience. Two miles above Mammoth Lakes, and two miles off the John Muir Trail is a comfortable facility on an old silver mining claim. Situated at 10,000 feet the site is a short distance from fabulous lake and stream fishing and the Minaret Wilderness area. Used as a base camp, this will provide many Jr. High and high school youth with the chance to back pack into the crown of California mountains.

East side Kern County parents should know that such facilities and program previously outlined assure a complete change of environment for their children. Group camping is a unique experience for young people.

Those wishing brochures may write YMCA Headquarters, 900 22nd Street, Bakersfield, Calif.

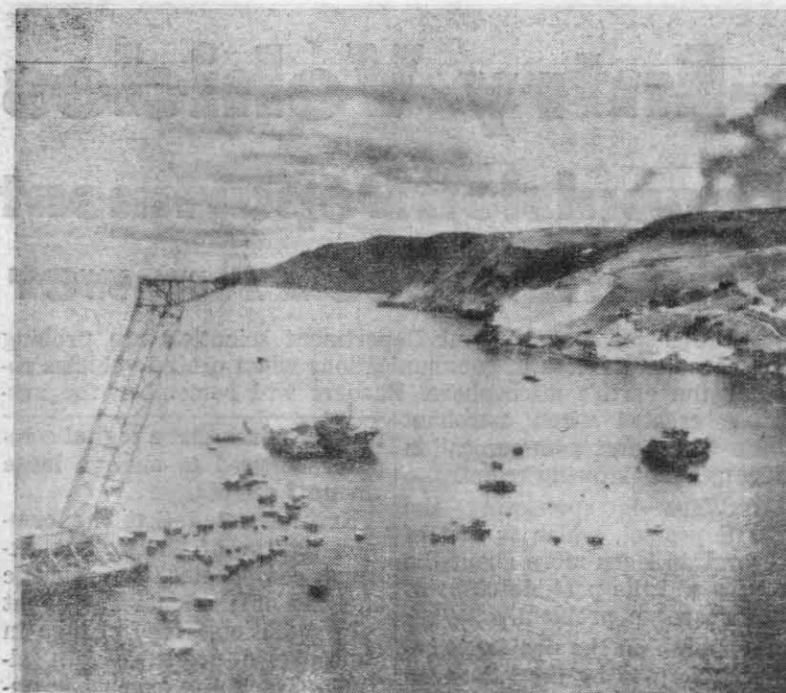
NO NEW LANGUAGE

Originality does not consist of inventing a new language, but in expressing in the accepted language all possible new and personal thoughts. — Rene Dumesnil

SPORTS QUIZ

Answers to Quiz

1. What is the fastest time recorded for a woman running the mile?
 4. Marjorie Ann Millicent Chabrian (New Zealand) ran a mile in 4 minutes 41.4 seconds, in 1935.
2. What is the record for the heaviest weight lift?
 2,600 pounds was lifted by Paul Anderson (U.S.) in 1957.
3. What country has won the most Olympic hockey titles?
 Canada; 6 times since 1930.
4. What was the highest price ever paid for a race horse?
 5,18 hands (about 72 inches), \$1,251,200 in 1955.
5. What was the height of the tallest race horse?
 The horse was Ambergris, foal, recorded for a woman running the mile?



SCI RANGE—Located 60 miles off the California coast, San Clemente Island is ideal for testing NOTS ASW systems with its deep clear waters, varied terrain and high cliffs. Specialized instrumentation located on the island and directly offshore, as well as the diverse sea ranges, add up to making this facility one of the most important to the testing program at NOTS. NOTS military men at the island play an important role in carrying on the work of defensive weapons for peace.



DISPENSARY—Medical Corpsmen serve all medical needs of military, civilians, and fishermen in trouble at the island. The Sickbay has two ambulances, three Corpsmen—two on duty while third is off. Above blood pressure of Leonard Thompson, SA, is checked by P. E. Clancy, HM2. Medical officers at China Lake rotate weekly for duty at SCI.



RECREATION—Facilities are maintained by military personnel for recreational needs of military and civilians at island.



NOTS this week salutes the men of San Clemente Island who by their technical and support services are invaluable to the NOTS role of providing deterrent weapons for peace.

Photography by Ralph Robey, PH2

PERSONNEL — R. F. Spoonhoward, YN1, is in charge of personnel administration of the 40 enlisted men at the island.

NOTS Pasadena

VIRGINIA E. LIBBY — EXT. 638

Salute SCI Division Men For Key Support Services

By NOVA SEMEYN

With its high cliffs above terrain to shallow water on the for NOTS programs.

And providing valuable support to NOTS programs are the military men assigned to NOTS Pasadena's San Clemente Island Division — three officers, three chief petty officers, and about 40 enlisted men.

Those in Command
Heading the San Clemente Island Division is Officer in Charge LCdr. John E. Schaefer. He is assisted by Operations Officer Lt. Carl M. Amick, Waterfront officer CWO George R. Townsend, and D. E. Bond, DCCS, who serves as Assistant Waterfront Officer. Bond is also Senior Chief Damage Control Officer. Chief Radioman J. J. Garnevicus is in charge of the Communication Center.

The enlisted men are trained and have the flexibility required for the many varied operations that must be performed.

They pilot boats, getting the range personnel to their water work sites; they perform maintenance on engines and boats; they stand continuous radio watch maintaining communication links with forces afloat and with China Lake, Pasadena, and Long Beach.

They serve as Firemen, Radiomen, Hospital Corpsmen, boat crews, and maintain facilities such as Navy Exchange, movie theater, bowling alley, and library to mention but a few.

The theater houses 300 persons and movies change nightly. The Island has a four-lane bowling alley, a basketball court, golf driving range, tennis court, library, and fully-stocked recreational club to mention some of the recreational facilities available.

'Overseas Shore Duty'
With their duty station 60 miles off the Southern California coast, the men refer to the Island as overseas shore duty.

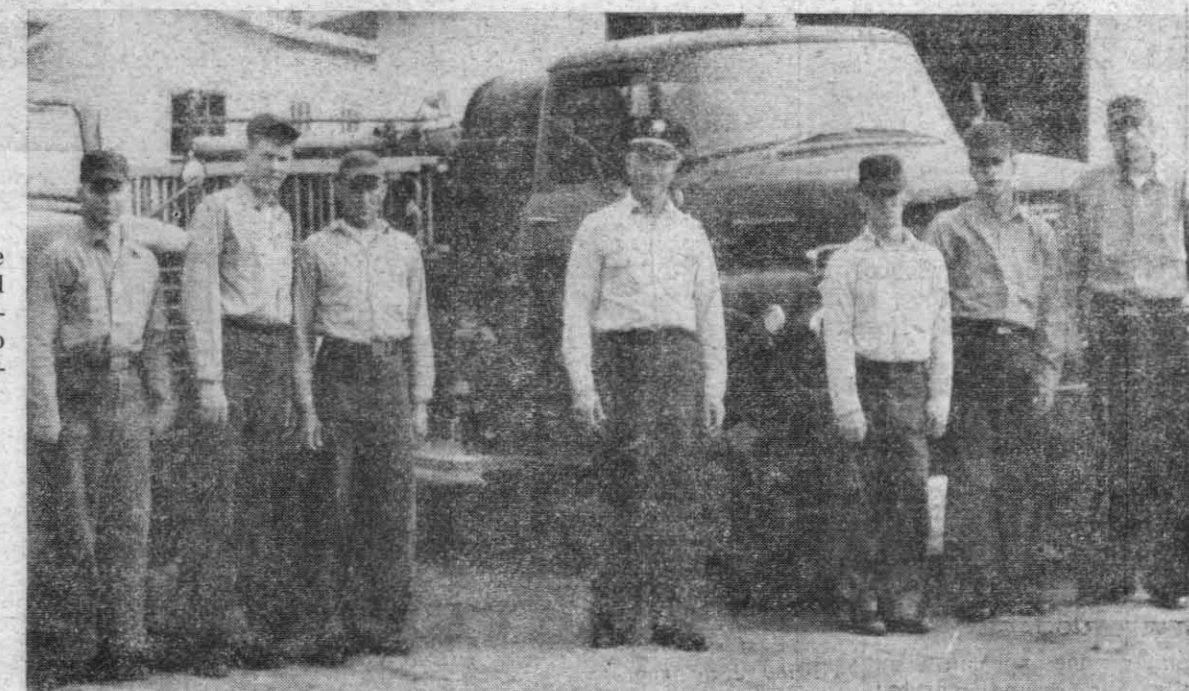
About one-fourth of the enlisted men, are married and liberty once a week means a trip home. Their families mostly live in Long Beach, some in San Diego.



ISLAND COMMAND—SCI Officer in Charge LCdr. John E. Schaefer (left) holds planning conference with Lt. Carl M. Amick, Operations Officer, and CWO-W4 George Townsend, Waterfront Officer.



COMMUNICATIONS CENTER — Manning operations board (l-r) are Radioman A. O. Roberts, RM2, and D. J. Steen, SA, while radio is manned by W. R. Hubbs, RMSN. Crew of eight men stand rotating watch in Radio Room. Communication is maintained with forces afloat and with China Lake, Pasadena, and Long Beach.



FIRE CREW—Fire engines Smokey No. 1 and Smokey No. 2 are kept in readiness by crews under supervision of Fire Captain Emmet Miller (center). Above, Smokey No. 1 is manned (l-r) by Steve Stuart, SN; McRay Wilson, FA; and Howard Strackbein, FA. Smokey No. 2's crew (l-r) are: David Reid, SA; Michael Staats, SA; and Loyd Turner, FN.

Navy League Council Officers Installed

(Continued from Page 1)
he'd had the same assistance from such a Council during his tenure as NOTS commander from 1952 to 1953 as the present Station Commander enjoys. He then went on to say he was in accordance with the Navy League's objective of a strong Navy. Citing the growing strength of the Soviet Union's submarine force as now over 400, he emphasized that we must have a stronger Navy than ever.

"Control of the seas means the safety of our nation," he said.

Aircraft Carriers' Role
Admiral Stroop then outlined the role for aircraft carriers to maintain this supremacy of the seas. The carrier is constantly on the move and thereby makes detection by the enemy more difficult.

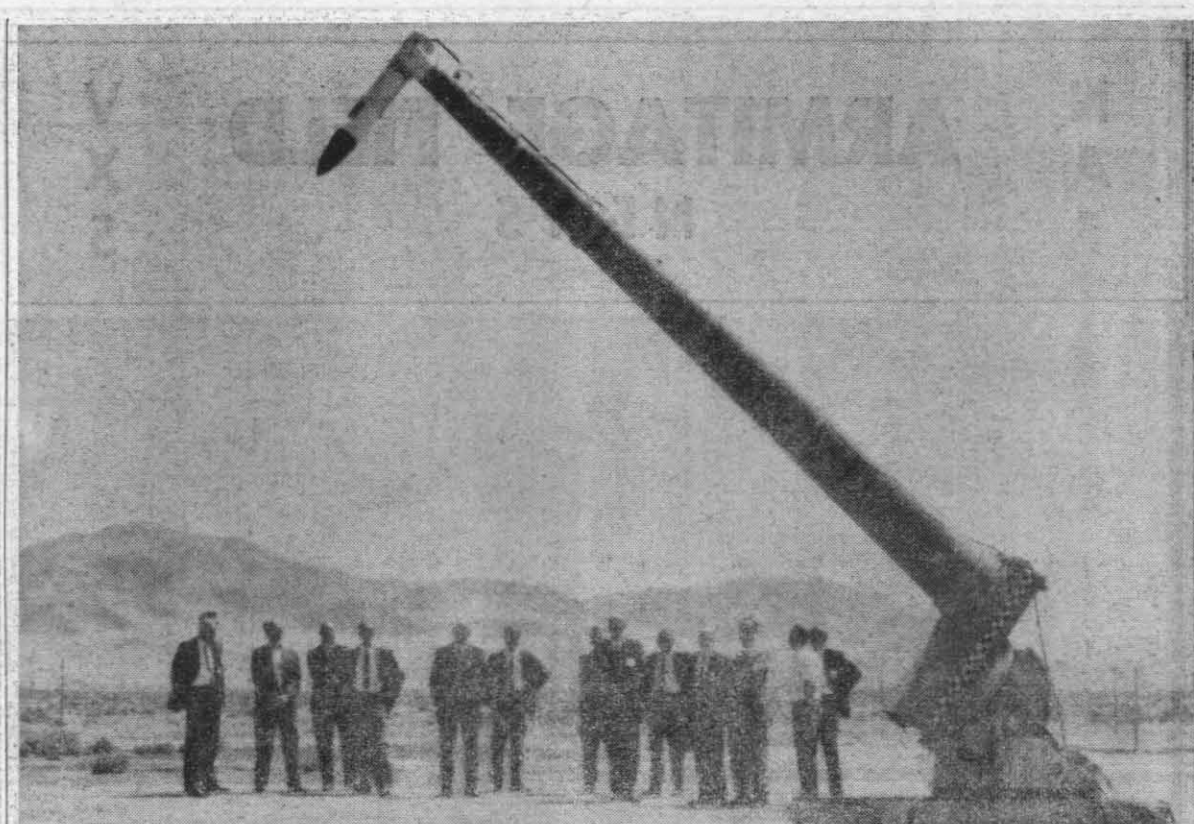
It gives us a mobile base from which to launch our air strikes. As mobile units, carriers can be rushed to most any area in the world to put out "brush fires" which could lead to a major war, Admiral Stroop concluded.

Station Commander Capt. Charles Blenman Jr. commended outgoing president Oldfield for his leadership of the Council and for his personal assistance as well as the Council's in co-hosting with the Station visiting Navy League Councils.

\$1200 Check Presented
An additional highlight of the installation dinner was the presentation of a \$1200 check from the Council for the Maturango Museum by the new president Puckett to Ken Robinson, director of the Museum.

Mrs. Charles Blenman Jr. was instrumental in the founding of the Museum to preserve the history of Indian Wells Valley.

New Directors
In addition to the new Council officers installed, eight new directors also assumed office. They are Andrew G. Houston, entertainment; Dr. Henry LaFortune, shipmate program; Harold W. Munn, sea cadet program; Todd Aslanian, membership; Herb King, historian; Frank Wentink, public relations; Paul McKenry, publicity; Merritt L. McIven, Marine and Corps Affairs.



INTERLABORATORY COMMITTEE VISITS ANTENNA RANGE

NSIA Visitors Briefed on Many NOTS Projects

Some 85 members of the National Security Industrial Association representing the nation's key aerospace-defense industries, concluded an overnight visit to the U. S. Naval Ordnance Test Station Thursday.

Captain Charles Blenman, Jr., Station Commander, extended the group a welcome address and presented "Highlights of the NOTS Technical Programs" to open a day-long session of presentations Thursday morning.

A discussion of weapons programs was conducted by Dr. Wm. B. McLean, NOTS Technical Director, in the early morning sessions.

On the schedule was a weapons delivery demonstration, conducted by Air Development Squadron-Five and narrated by LCDr. R. J. Schulte, Nuclear Weapons Delivery Tactics Officer for the Squadron, to conclude the morning events.

A series of presentations, including the SHRIKE Missile program, WALLEYE Missile program and Chaparral program, conducted by heads of departments concerned, were made during the afternoon hours Thursday.



COUNCIL PRESIDENT William B. Puckett (left) receives handshake of "thanks" from Ken Robinson, director of the Maturango Museum, after Puckett presented him a \$1200 check for the Museum from the IWW Navy League Council. In foreground is Dr. David Kraus who emceed dinner.

ILCF Holds 138th Meet at China Lake

The 138th meeting of the Interlaboratory Committee on Facilities (ILCF) was held at NOTS China Lake on April 9-10. This committee was organized in 1949 to promote cooperative use of facilities and to exchange technical knowledge, with a mission of minimizing duplication of equipment and effort.

The committee reports to the Technical Director of the laboratories and meets on the average of eight times a year, rotating the visits to coincide with the completion of new facilities.

A recent check of committee records over the past 15 years shows an estimated direct savings by transfer of equipment and supplies of \$1,750,000. In addition, a good many projects have been saved months of lead time in programs. These savings are intangible and no dollar value can readily be placed on them.

During the April meeting here, the group was shown the NOTS "Highlights," the NACODE equipment, new facilities of the Engineering Department, the Anechoic Chamber, and the Antenna Range. The cloud modification program was presented by Cdr. P. T. Jorgensen, and a discussion of government laboratories was led by Mr. H. G. Wilson, Associate Technical Director of NOTS.

Any NOTS group or project desiring to use the NOTS committee to find out if it is possible to borrow equipment or talent from a member laboratory should contact one of the following: K. H. Robinson, NOTS Senior Member; C. J. Renne, ILCF Secretary for 1964; R. G. Schrickler; or M. Van Reed, 1964 ILCF Chairman.

The member laboratories are NOTS China Lake, NOTS Pasadena, NOL Corona, NEL San Diego, NMC PMR Pt. Mugu, NCEL Point Hueneme, NPGS Monterey, and NRDL San Francisco.

TID Branch Heads Guest Speakers at Tech Writers Meet

Charles B. Nardone, Head of the Graphic Arts Branch of TID, and William J. Nash, Head of the Presentations Development Branch, are scheduled as guest speakers before the Sierra-Panamint Chapter of the Society of Technical Writers and Publishers next Tuesday evening at the Hideaway Restaurant in Ridgecrest.



NEW TOASTMASTER OFFICERS — Officials who will guide China Lake Toastmasters Club 852 through '64 (seated) are John Ward, president, Eli Zeitlin, area governor, (standing) Dick Brophy, administrative vice president, Lt. Phil Miller, educational vice president, Bill Baker, treasurer, and Paul Homer, secretary. Not present, Bill Funkhouser, sgt.-at-arms. Club meets each Thursday evening in the Executive Dining Room.

Single Personnel Get Break With New Housing Rules

An interim change to the Housing Policy has been approved pending issuance of a new policy. The changes are as follows:

Singles in Group "H" are added to the Zero and One-bedroom Motel and Apartment lists.

Singles in Groups "A" through "K" are added to the one-bedroom Normac list.

Singles in Groups H, I, J, and K are added to the one-bedroom Hawthorne list.

All persons in these categories are urged to apply at the Housing Office.

Applications received by April 24 will appear on the May lists. The Housing Office will remain open until 5:30 p.m. today to receive applications.

Information about these units can be obtained by phoning the Housing Office, Ext. 72239.

NAF

ARMITAGE FIELD NEWS

VX5



"HOLD IT, FELLAS." Richard L. Urban (standing in pool) gives buddies the "Nix!" sign when they started to toss Hollice H. Gregory into empty NAF swimming pool. It was all a gag to show that Minville Park is nearly ready for opening May 1. Holding Gregory are buddies (left) Richard A. Gibson, and (right) Jerry D. Smith.

VX-5 To Board USS Coral Sea

The first shipboard deployment of China Lake based Air Development Squadron Five since 1959 is scheduled during the week of May 9, according to a Squadron spokesman who said this week that his unit would board the carrier USS Coral Sea.

Approximately 20 officers and 75 enlisted crewmen are involved in the shift. Most of the Squadron's planes will be flown aboard while the carrier, which is based at NAS, Alameda, is at sea.

Round-the-clock air operations, designed to boost the unit's operational standards to fleet levels in all phases of operational readiness, will be conducted during the five-day deployment.

LCdr. Kerr Leaves, Lt. Jordan Reports

Officer personnel assignments this week at the Naval Air Facility concern the departure of Lieutenant Commander Robert G. Kerr, Personnel Officer, and the arrival of Lieutenant David C. Jordan, newly assigned to the Operations Department.

A decorated naval aviator whose service career extends back to 1943, LCdr. Kerr has been ordered to the Headquarters Support Activity at Taipei.

He reported here in April 1961 from duties with the staff of Commander of Fleet Air Wing Six at Iwakuni, Japan. It was during this tour of duty that LCdr. Kerr served as Mine Warfare and Gunnery Officer with additional responsibilities as Liaison Officer to the Japanese Maritime Self-Defense Force.

Dad Was Early Flyer
The son of Naval Aviator number 1341, Ensign Stephen L. Kerr, who was medically discharged from the Navy in 1918 following a flying boat accident at San Diego, LCdr. Kerr won the Air Medal and Korean Presidential Unit Citation for combat duties in Korea. He had previously earned two combat stars in the Asiatic-Pacific theater of operations during World War II.

The departing officer was born at Salt Lake City, Utah and attended the University of Washington before entering the Navy.

Married and the father of two sons, Jon, 10, and Mike 2, LCdr. and Mrs. Kerr have resided at 506-B Essex Circle.

Newest Officer
NAF's newest officer, Lt. Jordan reported here from enrollment at the Navy post-graduate school, Monterey. Prior to this assignment, he had served as a member of Light Jet Attack Squadron 146, based at NAS, Lemoore, Calif.

Born at Needham, Mass., he was graduated from the Massachusetts Maritime Academy and commissioned in 1956.

Trained at Pensacola
Lt. Jordan was designated a naval aviator following his training at Pensacola, Fla., in 1957.

Married to the former Margit Olander of San Diego, Calif., Lt. and Mrs. Jordan have one son, Jeffrey, 2½. They have been assigned quarters at 56-A Burroughs.

11ND Savings Bond Drive Begins May 1st

All commands within the Eleventh Naval District are being encouraged to give full support to the Federal Government's 1964 U. S. Savings Bond campaign from May 1 to July 4. RADM. Almon E. Loomis, Com11ND, points out that the campaign's theme will be "Operation Security" and will begin with the 23rd birthday of E Bonds on May 1 and end on the 188th anniversary of our Independence, July 4.



LCDR. ROBERT G. KERR



LT. DAVID C. JORDAN

Probe Signal Loss of Re-Entry Vehicles

Propulsion Department Scientists Seek Answer

Propulsion Development Department scientists are probing the cause of the loss of communications when orbital vehicles re-enter the earth's atmosphere. Readers will remember the suspense created when astronaut John Glenn lost communication during his harrowing re-entry.

BuWeps is sponsoring the NOTS project, which is one of several, to learn more about the causes and the possible cures of this spaceage problem.

Research on the project is being performed by the Advanced Technology Division, headed by H. Powell Jenkins Jr.

Harold Larsen, head of the Applied Research Branch of the Division, told this reporter that the project is both a theoretical and experimental investigation.

Tests at Edwards
Some of the experiments, which are also of interest to the Air Force, are being performed by Applied Research Branch personnel on rocket engines at Edwards Air Force Base under an informal working agreement with the Air Force.

Leroy Krycki, project engineer, said the telemetry or guidance signal, passing through the hot exhaust gases of a rocket engine or the ionized gases surrounding the re-entry body, may lose strength or become "garbled" with noise if the gases contain even moderate numbers of free electrons.

The free electrons are formed in the hot gases by thermal ionization of certain chemical species and thermionic emission from solid particles.

Not all exhausts create radar attenuation problems, but several missile systems familiar to the American public have had their share of this missile "ailment."

Project Explained
In the experiments being conducted by NOTS, microwave (radar) energy is focused by specially designed lenses through the exhaust plume of a rocket engine.

The attenuation, or loss of signal strength, is measured and the number of free electrons in the exhaust is then calculated by theoretical equations.

The complexity of these equations requires that a digital computer be used to analyze large amounts of data.

Krycki noted that the complex nature of the rocket exhaust complicates the realistic analysis of the data for flight.

In addition, the change in atmospheric pressure with altitude affects the exhaust in unanticipated ways.

Personnel Involved
Other Applied Research personnel working on the NOTS radar attenuation project are Thomas Seufert and Dan Harp.

Seufert is physicist with a Bachelor of Science degree from the Missouri School of Mines. He came to NOTS in 1960, and after completing the Junior Professional program, has been involved with advanced kinetic and optical systems.

Harp came to NOTS in 1962 and has been working on electric field phenomena and advanced energy conversion. He is a physicist with a Bachelor of Arts degree from Kansas State Teachers College.

Krycki holds Bachelor and Masters degrees in mechanical engineering from the University of Nebraska. He came to NOTS in 1960 after a previous summer in the summer employee program.

He has been actively involved in advanced combustion studies, energy conversion, and magnetofluids.

Initial Beginning
Larsen described how the radar attenuation program had its initial beginning as a magnetofluids diagnostic investigation.

Several years ago the branch was just beginning active research in advanced energy conversion techniques involving the interaction of electric and magnetic fields with electrically conducting rocket exhaust gases.

The attenuation of microwave energy in passing through electrically conducting gases was chosen as a method for measurement.

(Continued on Page 12)



APPLIED RESEARCH BRANCH PERSONNEL Leroy Krycki, Don Harp, and Harold Larsen inspect specially designed 18-inch focal length lenses used in equipment to measure attenuation of radar signals passed through rocket exhaust plume.

Station Anesthetist Leaves to Return To Private Practice

Here since August 1962, Lt. Loretta Schwider, Station Hospital anesthetist, leaves today to return to civilian life as an anesthetist at San Diego County Hospital.

Upon her request, she was released from active duty to work toward acquiring a college degree while carrying on her nursing career.



LT. LORETTA SCHWIDER

The RN obtained her training at St. Joseph School of Nursing in Ponca City, Okla., and Baylor University Hospital, Dallas, Tex.

While at NOTS, Lt. Schwider acquired quiet a reputation as a "kegler" in the bowling circles.

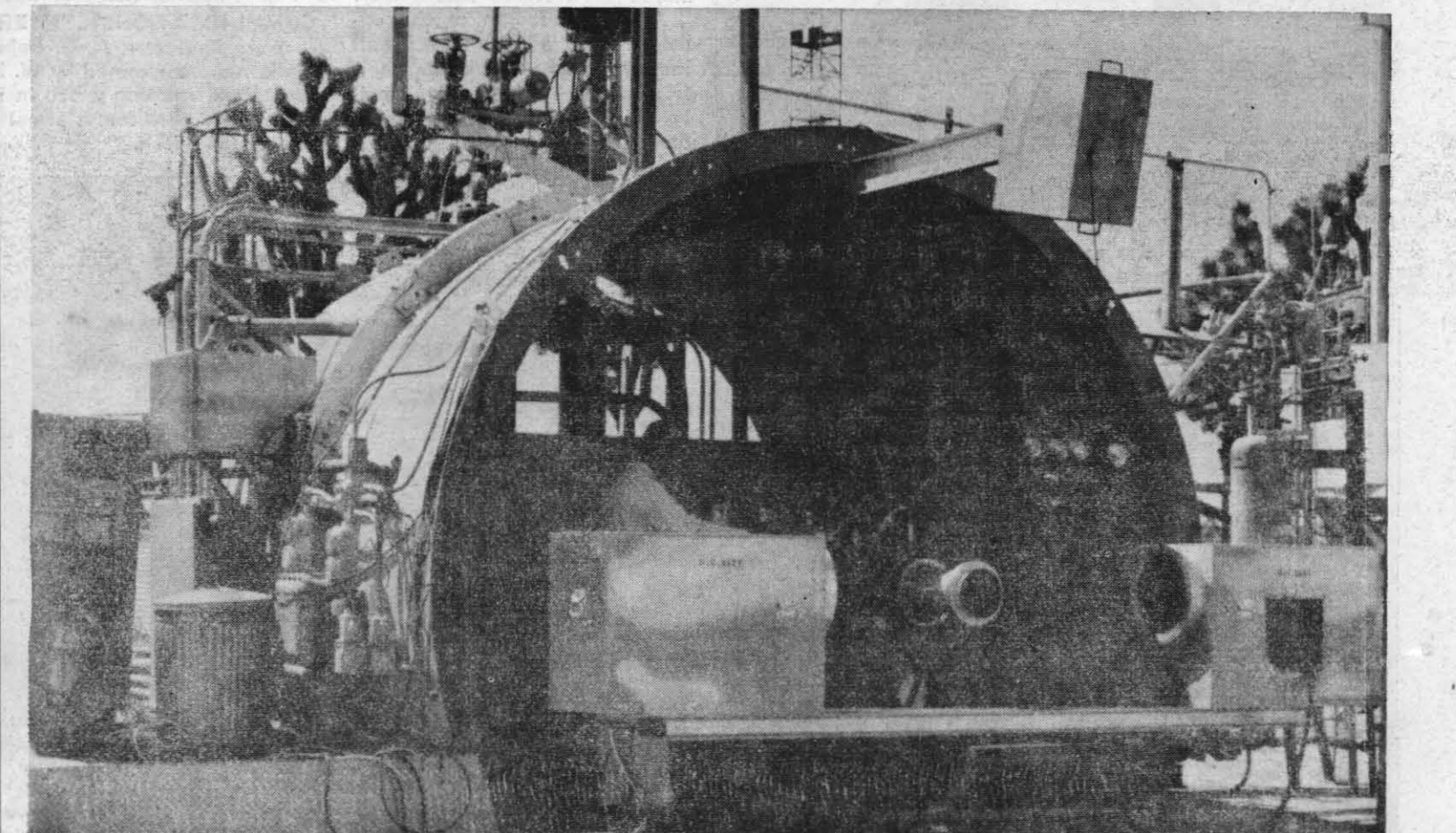
LCdr. Goldie D. Greer, who reported aboard last week, will serve as Station Hospital anesthetist.

Aetna Rep. to Visit

Howard Keenan, representative of Aetna Insurance Co., Oakland, will be at the Community Center on Monday and Tuesday, April 27 and 28, from 9 a.m. to 4:30 p.m.



TOM SEUFERT, Applied Research Branch physicist, calibrates equipment prior to test at Edwards Air Force Base.



NOTS-DEVELOPED RADAR ATTENUATION measuring equipment installation at Edwards Air Force Base is inspected by an Air Force sergeant. Device is used to measure radar signal strength as it goes through rocket exhaust plume.

Swim Pool To Open May 1

NAF Park Nearly Ready

Swim fin and snorkel season is near at hand at the Naval Air Facility's Minville Park where a crew of bluejackets this week neared completion of a month-long paint-patch project.

Embracing a dish-shaped swimming pool — one of the largest in this area — the Park will be opened for use to NAF, VX-5 and NOTS enlisted personnel May 1.

Included in those who may use the Park are NAF employed Civil Service Personnel, who are not members of the Commissioned Officers Mess.

The Park is maintained under the direction of Lieutenant R. D. Sheap, First Lieutenant at NAF, and includes picnic areas

equipped with barbecue facilities, an open air dance floor and two family-type cabanas.

Two lifeguards will be on duty at the pool at all times, according to Charles R. Geiser, A01, leading petty officer for the First Lieutenant Division.

He said the pool hours of operation this year will be from 2 to 9 p.m. Monday; 11:30 a.m. to 9 p.m. Tuesday (private parties only); 11:30 a.m. to 9 p.m. Wednesday through Friday; and 9 a.m. to 9 p.m. on Saturday, Sunday and holidays.

Included in the work crew putting finishing touches to the Park were Richard C. Hill, AA; Hollice H. Gregory, ABFAN; Richard A. Gibson, AA; Jerry D. Smith, AA; Richard L. Urban, AA; and Orin T. Pfeiffer, SN.

Douglas A. McCarthy, GMG2, is in the charge of the detail.



LCDR. WALDO L. BORN

LCdr. Waldo Born Of VX-5 Goes to ComNavAirPac

Lieutenant Commander, Waldo L. Born, Assistant Project Officer, Squadron Five, departs China Lake today for new duties with the Staff of Commander, Naval Air Force, U. S. Pacific Fleet.

A naval aviator since completion of his flight training in 1949, LCdr. Born reported here for duties in March 1961 from the carrier USS Saratoga.

Born at Bement, Ill., he entered the Navy in 1945 and was enrolled at Ohio State University for two years, from 1956 to 1958.

The Born family, which includes his wife, Margaret, and four children, Waldo, Jr., 12; twins Margaret and Elizabeth, 8, and Anne, 4, have lived at 307 Bogue Circle.

LCdr. Born's duties with VX-5 have been assumed by Commander John Abbott.



RADM. E. T. REICH, Head of Special Navy Task Force (Surface Missile Systems) and Director of the SMS Project, is greeted by Capt. Charles Blenman Jr., ComNOTS, upon arrival at NAF Air Terminal Tuesday for tour of Station facilities and briefing on NOTS projects.

It Takes Plenty Of Planning and Know-how of Many

(Continued from Page 5)
time-consuming trips to retail or wholesale stores, from preparation of paperwork for obtaining material, from the time-consuming operations of maintenance and replenishment.

Constant Stock Checks
Based on a review of the requirements with key personnel in the designated area, items for inclusion in the program are selected and new ones added. Once established, continuing replacement checks, usage checks, and non-utilization checks are performed by the Direct Support Stock Unit as a part of its stocking operation.

Direct support installations are spread throughout the Station, even on the ranges. Sixty one (61) direct support installations are in full operation under the watchful eye of the Direct Support Stock Unit, two (2) are in the process of development and one (1) request is on the "To Be Established" waiting list.

Retail Issue

SERVMART to you, Mr. Customer, is just a name which means improvement in service through a simplified procedure for withdrawing material from stock.

This is a supermarket type operation. The customer wheels a service cart through the store and selects items needed. A price tag is put on each item, and when a customer selects items needed, he brings them to a central checkout counter. Here the items are rung up on a register and charged to the appropriate code and job order number. The customer receives a receipt tape along with his material and he is on his way.

Each SERVMART is designed for service to a particular group, but this does not preclude others from obtaining the items stocked.

SERVMART 21 has as its objective the servicing of engineers, scientists, technical and office personnel in Michelson Laboratory.

SERVMART 24 with its metal stores is adjacent to the machine shop in Michelson Laboratory.

SERVMART 42 stock is slanted toward servicing the Naval Air Facility, AIRDEVRON FIVE, and the Aviation Ordnance Department and is located in the Naval Air Facility confines.

SERVMART 51 is located near the entrance to the China Lake Pilot Plant and its stock criteria is based primarily upon the needs of the Propulsion Development Department.



TRAFFIC DIVISION, Supply Department, Codes 256, 2561, 2562, 2563, 2565—Seated: (l-r) Pearl Law, Household Goods; Jeanne Spencer, Shipping; J. A. Bell, Head Traffic Division; Billie Robinson, Supervisor, Shipping Branch; D. Rusciolelli, Inspector, Household Goods. **Standing:** (l-r) J. G. Fisher, Crater; R. E. Elbrader, Supervisor, Crating & Packing Branch; V. H. Ender, Crater; J. W. Robbs and F. L. Worrell, Jr., Shipping; S. F. McKillop and B. A. Stepan, Craters.

Wholesale Issue

The heart of the wholesale area is known as Warehouse 10 and is situated on Blandy. If you desire material to be delivered, send one copy of a properly prepared stub request (DD 1150) to Warehouse 10. The material will be delivered to you within eight hours after receipt of the stub.

Any material located anywhere in the Supply Department wholesale areas may be obtained on an immediate basis pickup. Proceed to the storage area, give the storekeeper your badge number, shop accounting number, material job order, sign the EAM issue card and depart with your purchase.

Warehouse 11 is located in the confines of the Public Works Compound. The primary customers for construction and facilities maintenance type materials utilize this facility.

Purchase

More than one half of the materials utilized each year at NOTS must be obtained by purchase from commercial, or research service suppliers. At China Lake, on-the-shelf items of small value, automotive spare parts, construction materials, etc. are purchased from local suppliers in the Kern County area.

Purchase With Wisdom

The primary purchase operation for NOTS is performed by the Purchase Division in Pasadena. This office is staffed by approximately 40 personnel-experienced buyers, negotiators, etc. They handle approximately 90% of total purchase transactions for NOTS.

Contracts above \$10,000 level are consummated by Navy Purchasing Office, Los Angeles. On a selective basis contracts in this category are carefully monitored on a crib-to-casket basis by the Procurement Management Division at China Lake.

Human Element Plays Big Part

(Continued from Page 5)
material stocked; for the safe receipt, stores and issue of liquid fuel; for the identification of salvage and scrap excess, and surplus personal property.

Ralph J. Rogers heads the Technical Division which provides technical advisory services for the Supply Department; provides liaison between Supply and Technical Departments on stock levels of technical and non-standard items; recommends substitutes when appropriate; identifies material; maintains a complete current catalog library of Navy material and a library of commercial catalogs; provides direct support through the locating of pre-expanded bins in the working areas.

Lt. (jg) H. L. Lara, who also is Inventory Officer, and Richard D. Stokes, Head, Inventory Division, are responsible for the conducting of inventories of stock at China Lake and Pasadena for the reconciliation of stock record and money value differences between the Material Division and the Stock Control Branch.

The Commissary Division headed by Lt. (jg) L. J. Orr administers and operates the General Mess for enlisted military personnel, and provides uniforms and clothing for the Station complement of military personnel.

Mrs. Beulah Glidewell is Head of the Administrative Division, which performs personnel and office service functions for the Department.

Cdr. Cassin, Associate Director of Supply, Pasadena operations, provides management control of Supply Department functions at Pasadena. James E. Fletcher is his technical assistant and serves as policy advisor and consultant on procurement policies, procedures and special purchases. A. H. Assier, CWO, assists in carrying out Management Control Functions.

Personnel, office services and management functions are performed by the Planning and Administrative Branch under the supervision of Mildred Ball.

Keith M. Thompson, heads the Purchase Division which determines purchase methods and procures material and services by negotiated and formally advertised contracts and open market purchase; performs contract administration; performs purchase and technical-scientific procurement liaison; and coordinates scheduling of manufacturing procurement.

The Supply Division functions are the responsibility of Vernon W. Hayes who supervises the complete cycle of supply operations in support of the entire Pasadena complex.



BENEFICIAL SUGGESTION AWARDEES, Supply Department (Pasadena)—(l-r) Hal Wilhite, Myron Griest.



PURCHASE BRANCH, Control Division, Code 2574—Seated: S. D. Cole, Purchase Branch Supervisor. **Standing (l-r) Cecilia Rapier, Lt. H. L. Rice, Control Division Officer, and Dorothy Davis.**



AVIATION SUPPLY DIVISION, Department, Code 258—Front row: Truhill, A. G. Crowe, D. D. O'McGhin, L. E. Heath; **2nd row:** McDow, D. L. Hampton, P. J.



PROCUREMENT MANAGEMENT DIVISION, Supply Department, Code 252—Seated: W. J. Baker, Head Procurement Management Division; **standing (l-r) Ruth Walker, Carl Hamel, M. E. Craven, Sara Leatherbury.**

Two Full Pages of Pictures on Pages 6 and 7, Others on Page 8

CODE 25

Variety of Awards Won by Personnel of China Lake and Pasadena

Supply Department

U. S. Naval Ordnance Test Station, China Lake, California

Friday, April 24, 1964

SERVICE is the Keyword In Supply Department's Goal

Human Element Makes The System Succeed!

Supply Systems in effect today are versatile, dynamic and carefully conceived, but they need the human element to succeed. At China Lake, efforts to invent and perfect new weapons are being matched by efforts of support personnel who are equally dedicated to obtaining materials needed for these inventions.

Each year, obtaining and issuing some 50-60 million dollars worth of materials calls for hard work, ingenuity, skill, and know-how of the three hundred dedicated people who comprise the Supply Department at NOTS.

Problems, Principles, Action

Cdr. Baumann, Associate Director of Supply for China Lake Operations, and Cdr. Cassin, Associate Director of Supply for Pasadena Operations, meet with their respective officers and Division Heads to discuss operating problems and principles and to determine courses of action.

Even though each Division has a major function to perform, the final goal of service to our customers cannot be accomplished without the meshing together of the efforts of each Division.

The range of Cdr. Baumann's responsibility in the operating area can be seen in the alignment of the functions of the several divisions at China Lake.

The Ordnance Division, headed by Lloyd L. Rogers, furnishes logistic support services to all Station departments and projects in the area of explosives, propellants, AEC, and standard ordnance material and ammunition.

The Traffic Division, under the cognizance of Jesse A. Bell, makes arrangements for shipment and delivery of material to carriers; arranges storing and transporting of household goods; inspects vendor material not otherwise inspected; receives, segregates and forwards incoming vendor material to its destination.

The Control Division maintains inventory control of all material stocked and performs purchase, requisition, stock, issue and receipt functions; coordinates major logistic support with NOTS scheduled progress and timetables. Management of the Division is a military-civil service team of Lt. H. L. Rice and Mrs. Joanna Gniwek.

Lt. (jg) H. L. Lara, Aviation Supply Division Officer, and Navy men operate this Division in support of the Naval Air Facility, AIRDEVRON FIVE and the Aviation Ordnance Division. Another military-civil serv-

ice management team of Lt. R. H. Dolloff and Noel G. Lynn has the responsibility for the productiveness of the Material Division in its functions of receiving, storing and issuing of (Continued on Page 8)



CAPT. B. L. McCREERY SC, USN
Director of Supply



J. H. MCGLOTHLIN
Head, Planning Division



CDR. W. O. BAUMANN SC, USN
Associate Director of Supply For China Lake Operations

It Takes Plenty Of Planning, Know-How

By EMMA G. RORICK

The word service is not a new word, but evolution has made changes in the service concept.

Changes in strategy, weaponry and global commitments have created different requirements.

Technical advances to the procedures involved in developing new weaponry is reason enough for adjustment in logistic support and changes in the services rendered.

Service at NOTS is the supplying of all requirements promptly to facilitate the completion of projects and materially improve the Station's ability to meet time schedules.

Service is the reducing of the technical manhours used in procuring supplies.

Service is the business of working hand-in-hand with the customer to better determine his needs.

A Common Understanding

It is the integration of customer support requirements within the framework of supply operations, and the integration of problems and projects into a common understanding which permits the flexibility essential to the fulfillment of the Supply Department's role in the NOTS mission.

Whenever problems of any phase of supply support arise in the technical and support departments, I hope there will be no hesitation in making them known to me or to others in Supply Management," says Capt. B. L. McCreery, Director of Supply, "so that the Supply Department may share in them and help in working out a solution in the achievement of our mutual Station effort. Make your wants known to the Supply Department and Supply will find a way to satisfy your requirements of when, where and in quantity needed."

Echelons of Supply Support
To accrue more benefits to Supply Department customers in time saved, reduction of paperwork, speedier acquisition of material from station stocks, and from off-Station sources, four types of support have evolved:

Direct Service

The Direct Support Stock Unit of the Technical Division establishes and maintains within appropriate shops and lab spaces, bench stocks of daily in-use electronic and common use items.

This direct supply service frees technical personnel from (Continued on Page 8)



W. J. BAKER
Head, Procurement Management Division



CDR. T. A. CASSIN SC, USN
Associate Director of Supply For Pasadena Operations

Continuous Appraisal Leads to Greater Effectiveness

Improvements in the Supply Department to provide a better climate under which material support can exhibit responsiveness to the NOTS mission of research and development is the objective of the Director of Supply and his staff.

Recognizing that sound organization and procedures are an integral part of effective logistic service, the Planning Division is assigned the task of continuously reviewing and appraising the Department's organization, procedures and programs with the goal of greater effectiveness and economy.

A newcomer to the Supply Department organization is the Procurement Management Division. This Division is physically located at China Lake. It will provide, upon request, to China Lake Departments, advice and assistance during all three vital phases of the procurement process, i.e., procurement planning, contract negotiations and contract administration. This concept is in consonance with increased attention to the purchase function at all levels of government.

Closer cooperation and coordination of the operational components of the Supply Department are afforded by the Associate Director of Supply for China Lake Operations and Associate Director of Supply for Pasadena Operations.

Top Echelon and Support Personnel



RETAIL ISSUE STORES, MATERIAL DIVISION, Code 2592—1st row: (l-r) D. J. Knight, Supervisor; Lillian Boshard; Bernice Ingle; Dorothy Giles; F. Ptacnik, Sr.; 2nd row: (l-r) S. E. Vaughn, J. C. Schroeder, H. D. Stalaker, K. M. Torkelson, W. R. Gilmartin; 3rd

row: (l-r) H. J. Staver, E. S. Cornette, F. L. Jensen, J. D. Goodman. 4th row: (l-r) M. L. Busskohl, A. H. Crista, G. Horton. Not present L. A. Radcliff, W. S. Clement, H. T. Per tubal.



SUPERIOR ACHIEVEMENT AWARD presented to Magazine Operations Branch, Ordnance Division, Code 2551. Kneeling: (l-r) J. T. Kirk, W. F. Bertine, J. H. Scarbrough, E. E. Slaton, N. Rhoades, B. H. Hughes. Stand-

ing (l-r) G. I. Mantere, Supervisor; J. C. Adams, D. E. Fifer, G. E. Burden, A. I. Stevens, A. G. Bridges, J. C. Crowson. Not present: H. Green.



BUYING & ORDER BRANCH, Purchase Division, Pasadena, Code P2561—Seated (l-r) Cathy Caves, Rose Weinberg, Dorothy Warren, Helen McReynolds, Grace Naylor. Standing (l-r) Diana Hall, Elayne Colson, Kay

Strapp, Bill Smith, Eleanor Hansen, Florence Williamson, Bobbie Esparza, Bertha Walsh. Not pictured: Virginia Banister, Jeanne Struman, Edith Young, Rosemary Calvi.



SUPERIOR ACCOMPLISHMENT AWARDEES, Supply Department, China Lake—(l-r) Beulah Glidewell, Superior Accomplishment; Capt. B. L. McCreery presenting awards; Julia Hornback, Dorris Johnson, Jean Gale of Services Branch, Administrative Division group award.



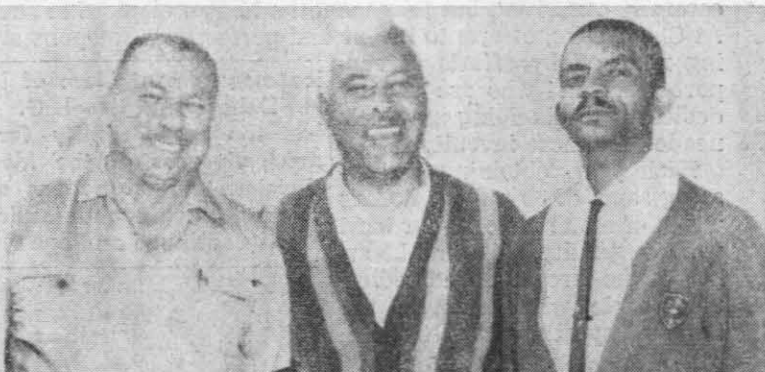
MANAGEMENT SUPPLY DEPARTMENT, Pasadena Annex—Seated (l-r) Cdr. T. A. Casin, Associate Director of Supply for Pasadena Operations; CWO A. H. Asseier, Ass't to Director of Supply. Standing (l-r) V. W.

Hayes, Head Supply Division, K. M. Thomson, Head, Purchase Division; Joan McCann, Secretary; J. E. Fletcher, Technical Assistant. Not present: Mildred Ball, Head, Planning and Administrative Division.



ASSOCIATE DIRECTOR OF SUPPLY for China Lake Operations confers with Division Heads and Officers. Seated (l-r) N. G. Lynn, Head, Material Division; Lt. R. H. Dolloff, Material Division Officer; J. H. McGlothlin, Head, Planning Division; Lt. (jg) L. J. Orr, Commissary Division Officer; Cdr. W. O. Baumann, Associate Director of Supply; Lt. H. L. Rice,

Control Division Officer; L. L. Rogers, Head Ordnance Division; J. A. Bell, Head, Traffic Division; Beulah Glidewell, Head Administrative Division. Standing (l-r) Chief S. S. Springer, Technical Ass't. Photographic Material; R. D. Stokes, Head, Inventory Division; Lt. (jg) H. L. Lara, Aviation Supply Division Officer; D. Reale, Acting Head, Technical Division.



SUPERIOR ACHIEVEMENT GROUP award goes to personnel of the Long Beach and San Clemente Units of the Range Material Branch, Supply Division (Pasadena). L-R: R. Love-



lace, Supervisor, makes award to W. Morgan and I. Lindsay of Long Beach Unit; and to R. Katz, W. Owens, J. Barberine of San Clemente Unit.



CONTRACT LIAISON BRANCH and Industrial Manufacturing Branch, Purchase Division, Supply Department, Pasadena. Front row (l-r) H. Edmonds, M. Navarro, I. Stone, Betty Silver, K. M. Thomson, Head, Purchase Division; Irene McGee, Secretary; G. Harmon, J. Diaz, L. Hildreth, A. Irvine, C. Weaver.

Back row (l-r) C. Kuhn, O. W. Eckert, H. A. Byall, R. Batters, K. Dyer; E. Emerick, Supervisor Liaison Contract Branch; J. C. Busik, Supervisor, Industrial Manufacturing Branch; R. Strohmaier, G. Hughes.



OUTSTANDING PERFORMANCE RATINGS. Capt. B. L. McCreery presents ratings at China Lake to Supply Department employees: (l-r) V. S. Wilson, Bernice Ingle, Dorothy Dif-ly, Lurlene Kemp, Naomi Cummings, Mary

Todd, R. C. Winder, J. R. McCall. Back row: (l-r) J. M. Auman, Irene Fetherolf, Mary Larson, Jane Morrell, Rikke Griffin. Not present: Jeanne Harris.



STORAGE BRANCH, MATERIAL Division, Code 2591—First row: (l-r) Teresa Hill, Div. Sec.; G. F. Haswell, H. H. Hawkins, Dorothy Wilcox, Verna Tucker, B. D. Proehl, Supervisor, Storage Branch. Second row (l-r) W. E. Lyons, R. W. Gatchell, L. B. Pittman, A. J. Moody, G. E. Beauchamp. Third row

(l-r) R. A. West; R. A. Shields; F. D. Murphy; S. Nenka; N. G. Lynn, Head Material Division; W. K. Beebe, Sr.; C. B. Morse; Lt. R. H. Dolloff, Material Division Officer. Not present: Jewell Halsey.



CONTROL BRANCH, SUPPLY DIVISION, Pasadena, Code P2581—Seated: (l-r) Bonnie Flood, Bessie Johnson, Evelyn Eckard, Supervisor, Control Branch. Standing: (l-r) Betty Crawford, Elizabeth Farina, V. W. Hayes,

Head, Supply Division; Helen Roberts, R. Armitage. Not present: Hazel Manley, Michiko Yamaoka, Erle Odekirk, P. Pino, H. Wilhite.



OUTSTANDING PERFORMANCE RATINGS for Personnel Supply Department, Pasadena

—(l-r) Mary Mahan, Evelyn Eckard, Irene McGee, Jo Ann Dalton, Marie Broshious.



BENEFICIAL SUGGESTION AWARDEES, Supply Department, China Lake—Front row (l-r) Bernice Ingle, Florence Walker, Irene Fetherolf, Martha Kyner. Back row: (l-r) Jack

Schroeder, Lewis A. Radcliff, Robert Elbrader, Josiah Goodman, G. A. Whiddon, AK1. Not present, Henry W. LaFortune.



CONTROL DIVISION, Codes 257, 2571, 2572, 2576—Seated (l-r) Alice Morris, Violet Martin and Ileta Shipman of Programs Management Branch; Naomi Cummings, Div. Sec.; Lt. H. L. Rice, Control Division Officer; standing (l-r) R. L. Boyack, Liaison with Code 45;

B. F. Wensinger and H. W. LaFortune of Programs Management Branch; T. R. Bates, Supervisor, Programs Management Branch; Chief S. S. Springer, Technical Assistant, Photo Material.