

Rental Rates to Increase Here in July

New Rates Outlined On Page 3

Housing rental rates at China Lake are going up. Secretary of the Navy Fred Korth ordered the increases which will become effective July 1.

Rental decreases are scheduled for a limited number of units. The total increases will not be charged in "one lump," but will be incremented on a basis of about one-fourth of the total per quarter.

The first increment becomes effective on July 1; subsequent increments will become effective on Oct. 1, Jan. 1 and April 1, 1964.

Where an increase amounts to \$1.20 or less, the total will be charged immediately as the new rates become effective in July.

A NOTS Instruction will be issued next week. Turn to Page 3 for listings of the new rates for the various housing units.

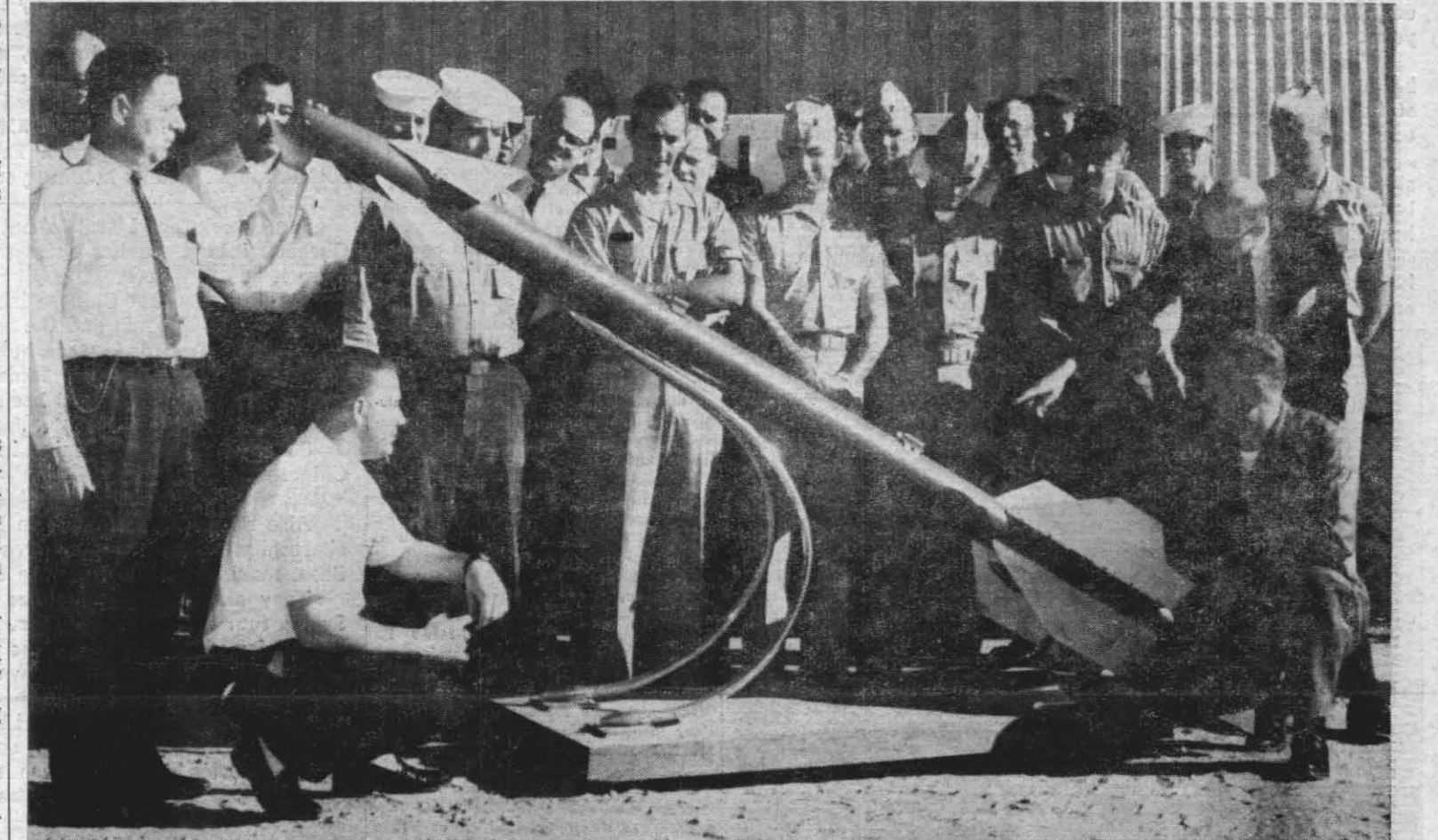


Vol. XVIII, No. 17

NAVAL ORDNANCE TEST STATION, CHINA LAKE, CALIFORNIA

Fri., May 3, 1963

Sidewinder 'School Bell' Tolls For Techs



INTRODUCTION TO SIDEWINDER 1C—Twenty technicians here for a two-week course on Sidewinder 1C get a first hand look at the bird. Explaining missile are course coordinator

Frank Wentink at seeker head; kneeling, instructor Wayne Krenz and Gunnery Sergeant J. O. Thornton, USMC; and instructor Gordon Wenneker who is pointing at missile motor.

Twenty Here To Attend Sidewinder 1C Course

Twenty key military and civilian technicians from nine Naval and Marine installations where the Sidewinder 1C systems will be used are aboard the Station attending a Sidewinder 1C Training Course.

The "students" are from all over the nation. The two-week Station sponsored course is to familiarize the group with the operation and maintenance of test equipment used to check out the Sidewinder 1C.

The Sidewinder 1C is an improved version of the Sidewinder 1A which became operational in 1956 and was highly successful during the 1958 Quemoy crisis in which the Chinese Nationalists reportedly knocked down 13 Red MIGs with the NOTS-developed weapon.

The course is being coordinated by Frank Wentink who has been associated with Sidewinder since its inception. Wentink

heads up the Fleet Field Service Unit, Engineering Department. He is being assisted by Warren Ridpath.

Instructors for the course are Gordon Wenneker and Wayne Krenz, representatives (Continued on Page 8)

'Play Ball!' "Play Ball" will ring out at McLaughlin Memorial Park as the 1963 China Lake Little League Major League gets underway at 6:30 p.m. next Monday. The first games will find the 1962 champions, the Dodgers, meeting the Pirates on Diamond No. 1 and the Red Sox meeting the Yankees on Diamond No. 2. The first half of the Major League schedule with each team playing 10 games will be played at McLaughlin Park diamonds pending completion of the new diamonds at Snackenburg field. The first half schedule is on Page 7.



BRITISH MAJ. GEN. RALPH H. FARRANT, president of the Ordnance Board, United Kingdom; J. W. Gibson (left), a member of the Ordnance Board, and C. J. Carter, director of Guided Weapons and Electronics, Defense Research Staff, Washington, were distinguished guests of NOTS this week. Tour informed them of procedures, techniques and facilities, testing and evaluation of weapons systems.

Local Anglers Catch 70 Pound "Totoaba"

Seven Station "Izaak Walton's" recently made the trek to San Felipe, Baja California, and two of them came back with a 70 pound and a 65 pound "Totoaba," commonly referred to as a sea bass by the uninformed angler.

Test Department's Ernie Long hooked his 70 pound Totoaba in 50 feet of water. He used a live Covina for bait, a 100 pound test line with a 9/0 hook and a 90 pound test steel leader and an 8 ounce sinker.

As soon as Ernie felt the fish take the bait, he set his hook hard, then let him make about six runs between 100 and 200 yards, during which he again set his hook two or three times.

Ernie brought him up after a 30 minute fight. Although Groves School principal Carl Barker hooked a lighter (65 pound) fish, it took him 45 minutes to land it with the assistance of Bob Shaw.

The brown and silver "Totoaba" is actually a member of the croaker family. The female sometimes weighs over 300 pounds and often attains six feet or more in length. It is a bottom feeder.

It is found in no other waters of the world except the gulf and mostly from the mouth of the Colorado River to Mulege on the east coast of Baja California.

And from the mouth of the Colorado to Mazatlan, on the west coast of the mainland of Mexico.

Seven Make Trip Others making the trek to San Felipe in addition to Long and Barker were Public Work's electrician Bob Shaw, Tom Cook, a retired Public Works' plumber, Engineering Department's Charles Radcliff, Charles Mullin and Harlan Peterson. All reported that the 125 mile stretch between Mexicali and San Felipe is an excellent black top highway.



ERNIE LONG ... with 70-lb. catch



CARL BARKER ... with 65-lb. catch

Sidewinder Class in Session

(Continued from Page 1) MCAS Cherry Point, S. C. Sgt. K. R. Hand, USMC. NAD Concord C. W. Austin, Earl Miller, A. D. Pinney, AX-1, and B. T. Bagwell, AT-1.

NAS Miramar Ronald A. Sherriff, AT-2, John E. Thomas, AQB-3, and Michael J. Rogers, ATN-3.

NWS Yorktown, Va. Jesse O. Atchison Jr. and B. L. Williamson, AQC.

NWS Seal Beach Earl G. Kiel and Ralph Lohr, Jr.

NAS Memphis, Tenn. Richard L. Mercer, AQC, and James R. Poteet, AT-1.

NAS Oceana, Va. J. S. Weeks, AQ-1.

MCAS Beaufort, S. C. J. S. Carver, Naval Aviation Electronics Unit representative.

IMPACT Energy increases as the square of speed. Impact at 70 mph is not twice what is at 35 — it's four times as much! — National Safety Council.

From _____ PLACE STAMP HERE TO _____

SHOWBOAT

MAY 3

"MY SIX LOVES" Debbie Reynolds, Cliff Robertson 7 p.m. (Out at 8:58)

(Comedy-Drama in Color) Famous actress has her prescribed vacation shattered by discovering six tots living in a shack. Her struggle to avoid doing a new play and to mother the kids makes this top film fare. Here is a real wholesome film for critics. (Family)

SHORT: "Get Rich Quick" (7 Min.)

MAY 4

"-MATINEE- "WAGONS WEST" Rod Cameron 1 p.m. (Out at 2:30)

SHORT: "Yukon Hove It" (7 Min.) "King of Carnival No. 4" (13 Min.)

"-EVENING- "DIARY OF A MADMAN" Vincent Price Nancy Kovack 7 p.m. (Out at 8:56)

(Horror Drama in Color) Macabre story by DeMaupassant about a French magistrate whose will is bent to the desires and whims of the Marlo (an invisible being). Tops of its kind. (Adults and Young People)

SHORT: "Treasure of Istanbul" (10 Min.)

MAY 5

"BILLY ROSE'S JUMBO" Doris Day, Stephen Boyd, J. Durante 6 and 8:15 Sunday (Out at 8:14 and 10:24)

(Musical-Comedy in Color) Lifting tunes of Rodgers and Hart fill this saga of a flea-bitten circus and the efforts of the owner's daughter to keep it going. Three rings of laughs and tunes! (Family)

MAY 6

"ALASKA BY LAND AND BY SEA" 7:30 p.m. Travelogue filmed and narrated in person by Dr. Charles Forbes Taylor on our 49th State. Film features Banff, Edmonton, Dawson Creek, Alcan Highway, Matanuska, Anchorage, Juneau and Ketchikan.

MAY 7-8

"WAR AND PEACE" Henry Fonda, Audrey Hepburn, Mel Ferrer 6:30 p.m. (Out at 10:08)

(Drama in Color) Tolstoy's classic of Napoleonic times, a story filled with stories, intrigues and battles during hectic times for the Russian Empire. A don't miss treat! (Adults and Young People)

MAY 9-10

"THIRTY YEARS OF FUN" Buster Keaton, Laurel & Hardy 7 p.m. (Out at 9:01)

(Comedy) Compilation of laugh-filled sketches with the clowning antics by the world's best-loved comedians of yester year. Slapstick kings plus Lillian Russell, Teddy Roosevelt, the Wright Brothers and French comedies. (Family)

SHORT: "Bowling Alley Cat" (7 Min.) "Wonders of Arkansas" (19 Min.)

COMING ATTRACTIONS May 11 - "Fury of the Pagans" May 12-13 - "Papa's Delicate Condition" May 14-15 - "One-Eyed Jacks"

A private, non-profit network, Radio Free Europe is on the air seven days a week, for 18 hours a day to Poland, Czechoslovakia and Hungary and 5 hours a day to Romania and Bulgaria.

CROSSWORD PUZZLE

ACROSS 1-Leather thong 6-Army officer 11-Characteristic of old age 12-Dwelt 14-King of Bashian 15-Sailors (colloq.) 17-Distance measure 18-Be ill 20-Sum 22-Nothing 24-Part in play 26-Memoranda 28-A continent (abbr.) 29-Breaks suddenly 31-Oulian 33-Speck 35-Box 36-Conductors 37-Haste 42-Printer's measure 43-Choice part 45-Withered 46-Arabian garment 48-Growing out of 50-Offspring 51-Tide for money 53-Long, slender fish (pl.) 55-Delirium tremens (abbr.) 56-Spoors 59-Female relatives 61-Prolonged attempt to gain possession 62-Performed DOWN 1-Multitude 2-Printer's measure 3-River island 4-Narrow, flat board 5-Lens-legged bird

Kaufman-Hart Play Staged at Burroughs High

Burroughs High School will present its second play of the year, "You Can't Take It With You," Tuesday and Wednesday, May 7 and 8. The hilarious comedy by George F. Kaufman and Moss Hart is directed by Steve and Serita Deutsch.

In the cast are Nancy Neilsen, Wayne Stephens, Tony Schneider, Carol Cox, Doug Cooper, Martha Williams, Bob Johnson, Jim Heflin, Kattie Davis, Tom Clow, Bob Eraitman, Richard Cox, Bucky Smith, Kathy Sailing, Ann Grisham and Sharon

Lorraine Scheidt Named Director of CL Day Nursery

The appointment of Mrs. Lorraine Scheidt as full-time director of the China Lake Day Nursery and Child Care Center was approved by the Board of Directors at its meeting last Monday.

Mrs. Scheidt previously was in a part-time advisory capacity as curriculum coordinator.

At the same meeting, Peggy Knoblauch was named Administrative Assistant, succeeding Helen Fletcher whose resignation was accepted with regret.

Curtain time is 7:30 in the Burroughs multi-use room. Admission is 50 cents.



PASADENA WIVES ON VISIT—Wives of Pasadena employees discuss plans for a Thursday tour of the Station at a reception held in their honor by Mrs. Blenman. Seated are Mrs. Blenman and Joyce Lippincott. Standing (l-r) are Mrs. E. I. (Madge) Malone, Burma Schwager, Mrs. William Place, Mrs. Eugene Osuch, and Mrs. Don Sandy. Fourteen wives of officers and employees at NOTS Pasadena participated in Thursday's tour.

CHAPLAIN'S MESSAGE

Squandered Opportunities

By CHAPLAIN ROBERT C. FENNING



The radio was turned to a program called "Monitor" as we covered the homeward stretches of highway from Los Angeles the other afternoon.

"What," asked the announcer, "do you wish most of all to see as soon as your eyes have become sufficiently accustomed to their new capabilities?"

She thought it would be wonderful to ride in a bus across America. The lady said with infectious enthusiasm that there were so many things now to see and do that she sometimes wondered how she could accomplish them all in her few remaining years.

Finally, she said that if she had one wish, she wished it might be possible for her deceased mother to come back if for only an hour or so, to share her good fortune.

We sat in silence for a few minutes following this impressive interview. People all over the nation who heard it must have been affected in a similarly sobering manner by what they had heard.

How foolishly we waste our God-given opportunities for happiness. We are thankful to that lady for helping us to stop and realize it.

PROMOTIONAL OPPORTUNITIES

Present Station employees are encouraged to apply for the positions listed below: Applications should be accompanied by an up-to-date Form 58.

Electronic Engineer, GS-12 or GS-13, Code 4052 - Incumbent is responsible for the electronic design and development of sounding rocket payloads and instruments.

Electronic Engineer (Instrumentation), GS-855-9, PD 340053, Code 4052 - The incumbent participates in the electronic design and development of sounding rocket payloads and instruments.

Personnel Clerk (Typing), GS-4 or 5, Code 6503 - Incumbent is responsible for clerical work in several phases of the Station's Employee Development Program.

File application for above position with Par Dettling, Bldg. 34, Rm. 31, Phone 71393.

Auditor, GS-7, 9 or 11, Code 177 - Incumbent will serve as Internal Auditor in the Internal Review Division under the supervision of the Head of the Division.

Personal Clerk (Training) (Typing), GS-4 or 5, Code 6503 - Incumbent is responsible for clerical work in several phases of the Station's Employee Development Program.

Warehouseman, \$2.56 to \$2.78 per hr. Code 2594 - Receives, checks, stows, counts, issues, and assembles supplies.

File application for above positions with Mary Morris, Bldg. 34, Room 28, Phone 72723.

Warehouseman, \$2.56 to \$2.78 per hr. Code 2594 - Receives, checks, stows, counts, issues, and assembles supplies.

File application for above positions with Mary Morris, Bldg. 34, Room 28, Phone 72723. Deadline for applications is May 10.

Competitive Exam: Quartermaster, Ground Structures, Port Huene, Calif. Ann. No. 11ND-20-67 (63).

Further information may be obtained by calling Eunice Crookshank, Ext. 72069.

Freedom Bond Drive Week

Freedom Bond Drive Week goes into full swing here next week.

The campaign, coordinated by Codes 857, 651 and, for Pasadena, P2053, will consist of personal canvassing of all military personnel and civilian employees who do not presently participate in the Savings Bond Program.

Savings Bonds offer complete safety. Values are guaranteed—they are not affected by market fluctuations. When one invests in Savings Bonds, he not only increases his own financial security, but he also helps finance the high cost of the Nation's defense and space programs in a way that is non-inflationary.

No Armed Forces Day 'Open House' Celebration Here

Due to previous commitments, Station Command announces that there will be no special observance of Armed Forces Day here this year.

The customary "Open House," with general visiting by the public, will not be held at China Lake, but the Pasadena Annex will have such an observance.

'DESERT PHILOSOPHER'

Bravos For The Cacti!

By "POP" LOFINCK



Why don't more people have cactus gardens? They don't have to be pampered like rose bushes and other flowers.

Of course their blooming season is shorter. But a cactus with or without blooms is beautiful the year round. The sun shining behind a cholla for instance.

Cactus plants merit admiration. Toss a prickly pear leaf out on the ground and it will start rootlets down and stems up. Flop it over and the stems turn to rootlets and the roots on top wither and start to grow stems again.

RUGGED BUT BEAUTIFUL

Cacti are rugged! Tenacious! Amazing Nature. They develop beauty and self defense simultaneously. Brave!

The rich green Creosote bush will send roots down 50 ft. if necessary to get water. They smell good too.

Add pretty rocks to your garden and you've got something. Rocks don't fade, wilt, rot, mildew or get bug eaten. You can work out some beautiful color patterns with rocks.

PLENTY OF EXERCISE, TOO

And no moving required. You get your exercise by lifting rocks around. What's holding you back?

Some weeks ago I wrote about how China Lake got its name. Checked into it further since then and got new information.

We do know that Chinese labor was brought into build the railroads of California and the west in the early days.

When the railroads were built the Chinese scattered out—working old mine dumps. Some Chinese got rich re-working dumps that the Whites had been careless about in their eagerness for the fast buck.

Sierra Gordo was booming in the 1870's. There were many Chinese there.

MADE CHARCOAL FOR SMELTERS

Also many Chinese came to Darwin in 1872. They operated charcoal pits in the forested area of the northwest corner of the Base, making charcoal for the smelters.

They also raised vegetables for Darwin at China Garden Spring four miles south of Darwin. So naturally they also prospect for placer gold in areas not requiring much geological education.

BORAX, POTASH YARN REJECTED

They did not gather borax cotton balls or scrape up potash as some stories have it, because it wasn't there. I have it from an authoritative source — an outstanding geologist who has made a study of the area — that there is no more than a trace of either.

It took much time and perseverance. The Chinese had both. They had a camp on the east side of the lake. So it's quite probable it was referred to as China Lake in 1873. So that's how China Lake got its name.

Another version — some pioneers looking down from the top of Wild Horse Mesa at that vast wilderness observed that it looked like a china bowl — so, when there was water in it — it was China Lake. Seems reasonable — but no proof.

POP HAS HIS OWN VERSION

Another version — my own — possibly a box of chinaware fell off of a freight wagon. They threw the pieces into the lake — so it became China Lake. Many places have gotten names just as accidentally.

But delete this last version — somebody might believe it!



DEPARTURE SMILES — "Doc" and Betty Adams smile their approval at the going away gifts they received from Public Works friends Monday evening at the Community Center.

Golfers To Vie for 'Hollister Cup' Award

Approximately 80 local divotters will be on hand to try their luck over the Station's fairways this weekend in the third annual Hollister Cup Tournament.

The tournament will be run as a "Best Ball of Partners" over 36 holes at full handicap.

Capt. W. W. Hollister, USN (Ret.), for whom the tournament is named, will tee off with Capt. Charles W. Blennman Jr., ComNOTS, and Capt. B. L. McCreery, NOTS Director of Supply.

The Hollister Cup Tournament was established by the China Lake Golf Club Association in

Adm. Burroughs was the Station's first Commanding Officer, from Dec., 1943 to Aug., 1945. Burroughs High School is named after him.

Ardent Golfer: Capt. Hollister during his tour as Station Commander from September '57 to June '61 was an ardent supporter of golf.

It was during his command that the present Golf Club House was dedicated following a 9-hole "Open House" Tournament, plus driving and putting contests, on Feb. 19, 1959.

The Hollister Cup Tournament was established by the China Lake Golf Club Association in

March of 1961. Winners of the "Hollister Cup" in the inaugural tournament were Earl Roby and Gary Stevenson.

Directors' Note: Prior to relinquishing his command of the Station on June 1, 1961, the Association's Board of Directors honored Capt. Hollister with a plaque for his work in initiating the acquiring of the back nine, which was carried through to completion under Capt. Blennman in March of 1962.

On Capt. Hollister's departure the directors extended a perpetual invitation to him to return each year to present the "Hollister Cup" to the winner

of the tournament named in his honor.

Last year he presented the '62 cup to winners Terry Haycock and Ed Zwierski.

Many of those who will be playing in the tournament over the weekend played their first golf on the old "Satellite" sand course in 1950 located off CLPP Road where the Archery Range is now. Some will remember when the Satellite course consisted of only four holes started by a group from Salt Wells.

Started in '54: According to golf pro Paul Someson, a grass driving range

opened in 1954 was the forerunner of the present course. In July of 1955 ground was broken for the first nine holes of the present course. The first nine was opened for play on June 30, 1956.

For some who trudge the back nine tomorrow it will be a satisfying experience for they will know they shared in the contribution of some 4,000 free man-hours towards its construction.

A missed putt will be more bearable with the knowledge that they had a hand in developing one of the finest courses in the area.

Advertisement for RIM SHOTS by Bill Valenteen. Includes a photo of a man and text about fishing and trout season.



TROPHY WINNERS of the Armed Services Bowling League pose at Acey Deucey Club dinner. They are (l-r) Nancy Bannister, Phyllis Hensen, Frank and Ruth Lueder, Hal Wen-

hold, Mel and Ginger Attaway, Chuck and Terri Manis, Maryland and John Rogers, William and Betty Wilson and Mary Resh. Hits and Misses were top team of season.

Open Bowling Armed Services Bowling League Awards Trophies

With the close of Winter League play, the lanes at Anchorage Bowling Alley will be open for "Open Bowling" from 1 to 11 p.m. seven days a week, according to manager Bob Gale.

The Acy-Deucey Club was the scene of an awards banquet that was held last Saturday night to honor the recipients of various trophies and awards which were given to participants

China Lake Little League 1963 Season Major League Schedule

Table with columns for Date, Diamond No. 1, and Diamond No. 2. Lists game dates from May 6 to May 31 and opponents.

in the Friday Night Armed Services Mixed Bowling League.

Lt. English, NOTS Special Services Officer, made the presentations. The event climaxed a season that saw seven teams of two couples each vying for top contention.

The most unusual award of the evening went to Phyllis Hensen for her prowess as "HUSBAND - BEATER." The award was given to her by her husband, Marshall.

The Men's Hi-Game Series award went to Harold Wenhold, and the Women's Hi-game trophy was given to Nancy Bannister.

The High Average awards were given to Chuck Manis-Mens-142, and Terri Manis-Womens-127.

A sponsor's trophy was given to members of the American Legion. This is the way the league finally closed out:

Table with columns for Team, Hits, Misses, Won, and Lost. Lists teams like Rebels, Flying Pins, etc.

New Burros Coaches

Reuben Tysell has been named to succeed Jim Riley as varsity football coach at Burroughs High, administrators announced this week. And William Moore will be the varsity basketball coach, succeeding John Henderson. Riley is going to Bakersfield's South High as assistant varsity coach, and Henderson will take over as South High's varsity basketball coach.



JUNIOR PROFESSIONAL EMPLOYEES of China Lake and Pasadena, on four-day orientation tour this week, hear Joe Dorgan (center) explain Data Reduction equipment of the Aircraft Projects Division.

Advertisement for The Rocketeer magazine, including subscription rates, contact info, and a section for Divine Services.

NOTS Pasadena News

Virginia E. Lane — Ext. 481



CDR. T. A. CASSIN



LES HILDRETH

Naval Reserve Groups Hear NOTS Speakers

The Supply Office, Pasadena, recently furnished two speakers to local U. S. Naval Reserve Training Groups.

Cdr. T. A. Cassin, Associate

Director of Supply, Pasadena, presented "Research and Development Procurement Procedures and Problems" to members of the Naval Reserve WEPTU 772, at Pasadena.

Bowling Balls "Moth-Balled"

Winding up another winter season for the NOTS Friday Nighters, the Knot Heads rolled to victory with 70½ wins. The Tigers were pushing them all the way and coming in second with 69½ games won. Other team standings were the NNAAs (No Name At All) with 62½ wins, A-Bums 60½, Untouchables 55, and Eagles 42.

The Navy Reservists indicated a keen interest in the topic. The program extended over a two-hour period, including a question and answer session, encompassing research and development contracting, procurement, planning and procedures.

The "speakers circuit" has taken Cdr. Cassin within the past month to NPOLA Reserve Officers Trainees and to a contract administration Naval Reserve Group in Canoga Park for similar presentations.

Les Hildreth, Production Specialist and Contract Negotiator, gave an orientation of the Station and spoke on the RAPEC Program to the USNR Research Company 11-2 at Pasadena.

This fine presentation, accompanied by a film on "Expanding Frontiers in Ordnance," has been presented by Les to many local organizations thereby familiarizing them with the mission of the Station.

PROMOTIONAL OPPORTUNITIES

To apply for positions, contact Nancy Reardon, Pasadena Personnel Division, Extension 104. An up-to-date SF-58 must be submitted when applying for positions.

Test Mechanic (Experimental Ordnance Equipment); Hourly Salary Range: \$3.14 to \$3.40; Code P8084; Duty Station: Morris Dam — Install, modify, calibrate, service and operate equipment used in experimental testing and development of gas generators, propulsion systems, prime movers, test vehicles and components. Handles and works with high pressure liquids, gases and steam.

Join The Team

It's not too late to become a member of the NOTS ESO Softball Team. Players are needed and welcome.

Present team members are: Dick Bourne, Ray Brooks, Victor Herbets, John Grove, Ben Long, Dick McCarthy, Charles McIntyre, Tom McKinney, James Martin, Roger Moorehead, Dick Talbot, Harold Vickroy, Donald Palmer, Hal Wilhite and Bob Cole.

Practice games are now in session with official competition with other city leagues to begin the week of May 13.

Personnel Statistics

New Employees
UOD — John J. Carlow, Ministr.

Terminations
Supply — Robert W. Templeton, Procurement Clerk.
UOD — Lois M. Blackmore, Clerk Stenographer.

Museum Diggings Continue On San Clemente Island

On March 16, the Southwest Museum started excavations at what appears to have been a large prehistoric Indian village site on San Clemente Island.

The area of the midden which comprises the site is on a knoll about 1300 feet above sea level in the northwesterly part of the island, and seems to occupy several acres.

It is identified by a U. S. Coast and Geodetic Survey marker, set up in 1933, called "Ledge."

"Although the site shows evidences of considerable "pothunting" in the past," reports Bruce Bryan of the Southwest Museum, the "surface remains indicate that it is well worth studying. There are numerous fragments of mortar and pestles and considerable shell debris lying about, and there is one small bedrock mortar on the eastern slope of the midden, under the present surface originally but found by a pothunter."

"Consequently, a trench was staked out, three feet wide and 90 feet long, running from east to west up the knoll. A number of pits, three feet wide by three feet long, were commenced in the trench, the fill being removed in six-inch strata.

"So far the midden deposits seem to be rather thin—12 to 18 inches in depth—but a number of interesting artifacts have been found, most of them unfortunately fragmentary. These include parts of "doughnut" stones, mortars, a steatite pipe, bone awls,



BEDROCK MORTAR—Bruce Bryan of the Southwest Museum uncovers a small bedrock mortar, which was used for grinding. —Photos by Dom Sanchez

and the like.

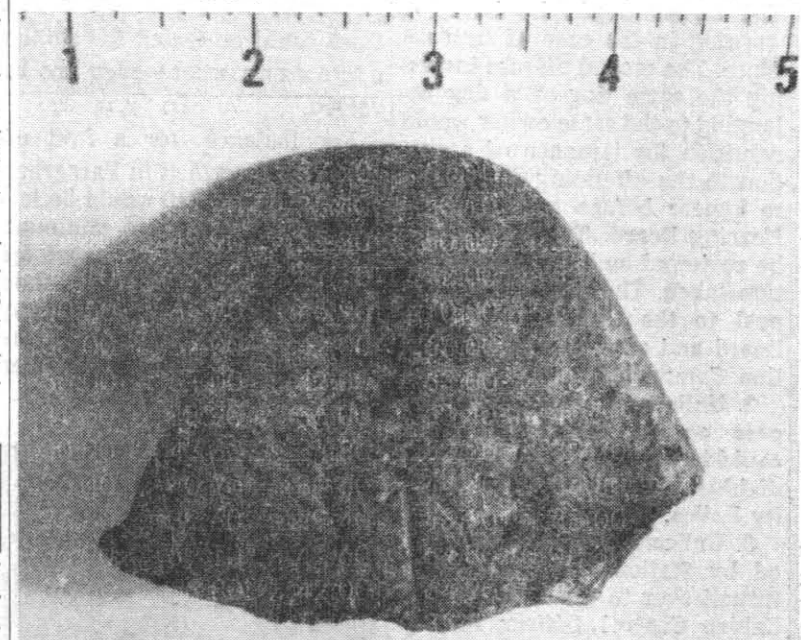
"Several pieces of worked and incised steatite, originally perforated as if for being attached to the person, were also found. One in particular is exceptionally interesting because on one side is an incised representation of some sort of four-limbed creature, the limbs ending in either claws or hands and feet. The

hole by which the object was perhaps attached to some Indian skin serves as the head of this pictographic effigy. The fragment is three inches long by three and one-half inches wide.

"Several artifacts were found unbroken, including some abalone shell fishhooks, fishhook blanks, stone drills, bone awls, an arrowhead, and a small "doughnut" stone. Two or three small shell pendants and numerous shell beads were sifted out, but no trade material of the historic period has been turned up."

The Museum is assisted in its excavations by the Archaeological Survey Association of Southern California, which also excavated a burial site on the island during the past year. The work is being carried on under the direction of Bruce Bryan, of the Southwest Museum, through field leaders of the ASA. Field leader of the initial work at "Ledge" was Gordon Redtfeldt.

Two Station personnel, John DeFriest and Dom Sanchez, have helped actively in the actual digging and are ardent archaeologists. It was DeFriest, a range manager on the Polaris program, who spotted the Ledge site from the air. Sanchez, photographer, was the discoverer of the burial ground.

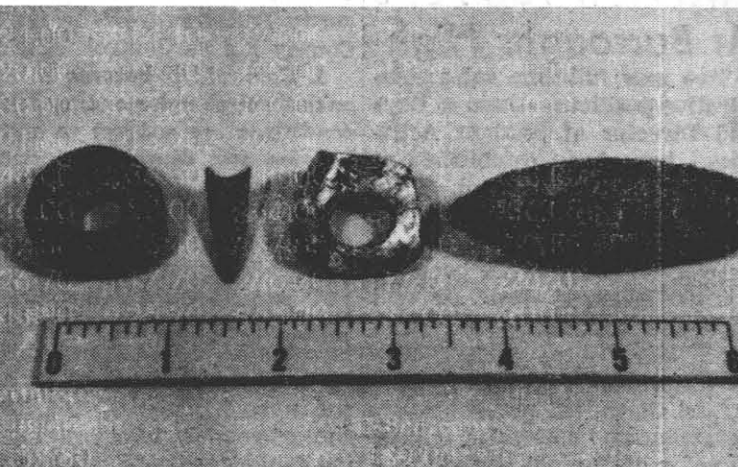


PENDANT? — A particularly interesting piece of incised steatite that may have been worn as an ornament. The hole, through which the piece was perhaps attached to something, and the claw-like markings beneath it tend to complete a picture of a weird creature.

False Tooth Transmitter

A Texas firm has developed a transmitter that can be inserted in the mouth as a false tooth—and sends coded messages by clamping the uppers on the lowers.

The hidden mouthpiece actually was designed for use in medical research. Doctors put the transmitter in the patients' mouths to study how often they open and shut their mouths during sleep and whether and how often they grind their teeth.

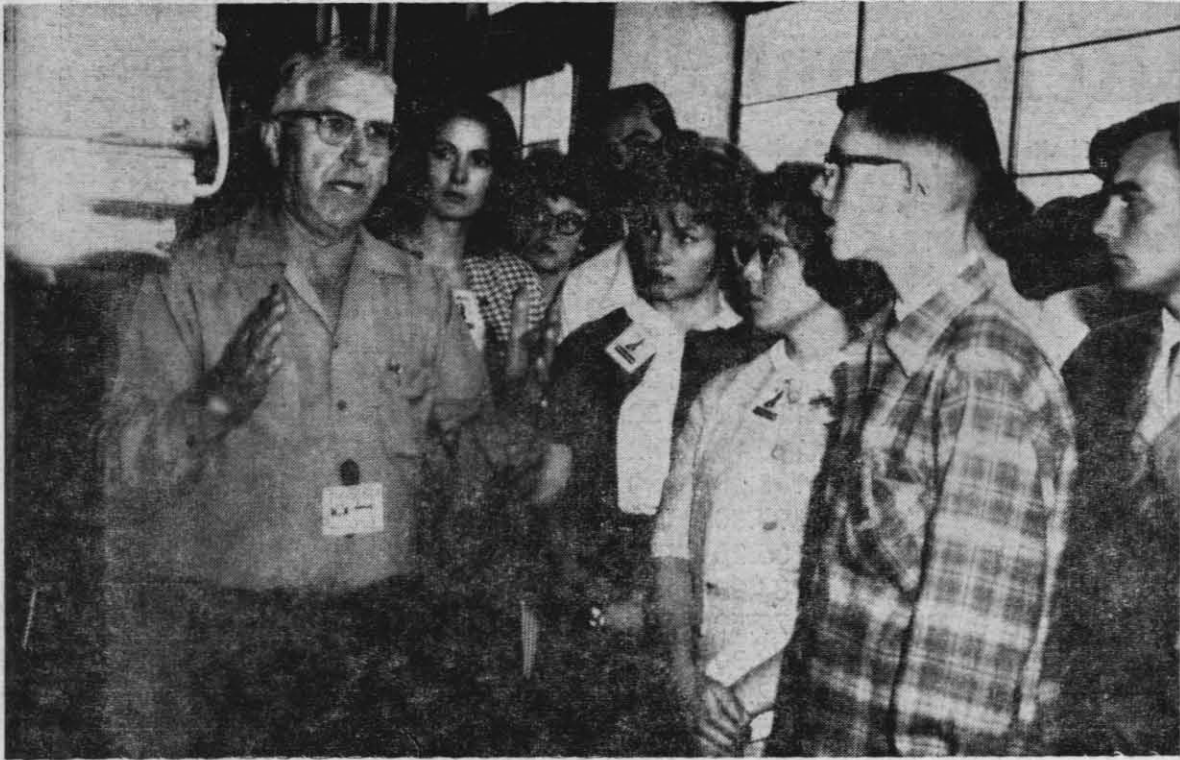


INDIAN ARTIFACTS—Many items were found unbroken, including a "doughnut" stone, arrowhead, shell fishhook blank, and stone drill. This drill fit perfectly into the fishhook blank indicating the fishhook was being completed at time of burial.

Future Shelter Rents and Utility Rates

TYPE—	Utilities	Shelter w/1st Increment	Total Effective July 63	Shelter w/2nd Increment	Total Effective Oct 63	Shelter w/3rd Increment	Total Effective Jan 64	Shelter w/4th Increment	Total Effective Apr 64
SOQ (4)	\$39.60	\$135.30	\$174.90	\$146.40	\$186.00	\$157.50	\$197.10	\$168.40	\$208.00
SSQ Sage (3)	49.80	100.80	150.60	105.60	155.40	110.40	160.20	115.20	165.00
SSQ Saratoga (3)	49.20	94.20	143.40	95.40	144.60	96.60	145.80	96.80	146.00
Sierra (4)	34.20	135.30	169.50	135.80	170.00	135.80	170.00	135.80	170.00
Coso (3)	33.00	127.00	160.00	127.00	160.00	127.00	160.00	127.00	160.00
Panamint (4)	33.90	114.30	148.20	116.10	150.00	117.90	151.80	118.10	152.00
Panamint (3)	32.70	108.90	141.60	110.10	142.80	111.30	144.00	112.30	145.00
JOQ (Rear Terrace) (3)	35.40	98.70	134.10	103.20	138.60	107.70	143.10	111.60	147.00
JOQ (Front Terrace) (3)	34.20	93.30	127.50	97.50	131.70	101.70	135.90	104.80	139.00
JOQ (Front Terrace, 1 Bath) (3)	34.20	83.70	117.90	85.20	119.40	86.70	120.90	87.80	122.00
JOQ (Rear Terrace) (2)	30.60	81.60	112.20	84.00	114.60	86.40	117.00	88.40	119.00
JOQ (Front Terrace) (2)	29.10	76.80	105.90	79.50	108.60	82.20	111.30	83.90	113.00
MOQ (3)	38.70	72.30	111.00	73.30	112.00	73.30	112.00	73.30	112.00
Hill Duplex (3)	33.00	67.80	100.80	72.60	105.60	77.40	110.40	82.00	115.00
Hill Duplex (2)	29.40	61.80	91.20	65.40	94.80	69.00	98.40	71.60	101.00
Wasp Circle Duplex (3)	37.50	60.60	98.10	63.40	101.10	66.60	104.10	69.50	107.00
Joshua (4)	30.90	100.50	131.40	104.10	135.00	107.70	138.60	109.10	140.00
Yucca (4) (Convertible)	29.40	96.90	126.30	100.50	129.90	104.10	133.50	106.60	136.00
Tamarisk (4) (Convertible)	29.40	87.00	116.40	89.40	118.80	91.80	121.20	93.60	123.00
Juniper (3)	28.80	87.00	115.80	89.40	118.20	91.80	120.60	94.20	123.00
Normac Duplex (3)	34.20	61.20	95.40	64.20	98.40	67.20	101.40	69.80	104.00
Normac Duplex (2)	29.40	55.50	84.90	60.00	89.40	64.50	93.90	67.60	97.00
Old Duplex (3)	31.20	60.00	91.20	63.00	94.20	66.00	99.20	68.80	100.00
Old Duplex (2)—North of Halsey	27.60	50.40	78.00	55.80	83.40	61.20	88.80	63.40	91.00
Old Duplex (2)—South of Halsey	27.60	49.20	76.80	53.40	81.00	57.60	85.20	61.40	89.00
Old Duplex (1)	21.90	39.60	61.50	45.00	66.90	50.40	72.30	55.10	77.00
New Wherry (4)	32.10	63.90	96.00	68.70	100.80	73.50	105.60	77.90	110.00
New Wherry (3)	27.90	57.60	85.50	61.80	89.70	66.00	93.90	70.10	98.00
New Wherry (2)	24.30	52.50	76.80	57.60	81.90	62.70	87.00	66.70	91.00
Old Wherry (3)	27.90	56.70	84.60	61.20	89.10	65.70	93.60	69.10	97.00
Old Wherry (2)	24.90	51.00	75.90	56.40	81.30	61.80	86.70	66.10	91.00
Normac (3)	34.50	40.20	74.70	44.10	78.60	48.00	82.50	51.50	86.00
Normac (Front) (2)	29.40	35.70	65.10	40.20	69.60	44.70	74.10	48.60	78.00
Normac (Rear) (2)	29.40	35.10	64.50	39.00	68.40	42.90	72.30	46.60	76.00
Normac (1)	27.60	31.50	59.10	33.90	61.50	36.30	63.90	38.40	66.00
LeTourneau (Front) (2)	30.90	35.40	66.30	39.60	70.50	43.80	74.70	47.10	78.00
LeTourneau (Rear) (2)	30.90	34.80	65.70	38.40	69.30	42.00	72.90	45.10	76.00
Hawthorne (3)	28.50	40.80	69.30	44.40	72.90	48.00	76.50	51.50	80.00
Hawthorne (2)	25.20	35.10	60.30	39.00	64.20	42.90	68.10	46.80	72.00
Hawthorne (1)	22.50	29.40	51.90	32.70	55.20	36.00	58.50	38.50	61.00
Motel Apartment (1)—526, 528, 531 Nimitz	18.30	45.60	63.90	48.00	66.30	50.40	68.70	52.70	71.00
109 Blandly, 110 Nimitz	18.30	45.30	63.60	47.40	65.70	49.50	67.80	50.70	69.00
North Richmond	18.30	44.40	62.70	45.60	63.90	46.80	65.10	47.70	66.00
South Richmond	18.30	44.40	62.70	45.70	64.00	45.70	64.00	45.70	64.00
Motel Apartment (0)—526, 528, 531 Nimitz	14.70	35.40	50.10	37.80	52.50	40.20	54.90	42.30	57.00
109 Blandly, 110 Nimitz	14.70	35.10	49.80	37.20	51.90	39.30	54.00	40.30	55.00
North Richmond	14.70	34.20	48.90	35.40	50.10	36.60	51.30	37.30	52.00
South Richmond	14.70	34.20	48.90	35.30	50.00	35.30	50.00	35.30	50.00
Old Apartment (3) A & D	24.90	41.10	66.00	47.10	72.00	53.10	78.00	59.10	84.00
Old Apartment (3) B & C	24.90	40.50	65.40	45.90	70.80	51.30	76.20	56.10	81.00
Old Apartment (2) A & D	21.00	36.00	57.00	42.00	63.00	48.00	69.00	53.00	74.00
Old Apartment (2) B & C	21.00	36.00	57.00	42.00	63.00	48.00	69.00	51.00	72.00
Old Apartment (1) A & F	17.40	31.50	48.90	36.00	53.40	40.50	57.90	44.60	62.00
Old Apartment (1) B, C, D, & E	17.40	30.90	48.30	34.80	52.20	38.70	56.10	42.60	60.00
Old Apartment (0) A & H	13.80	26.40	40.20	30.60	44.40	34.80	48.60	38.20	52.00
Old Apartment (0) B, C, D, E, F, & G	13.80	25.80	39.60	29.40	43.20	33.00	46.80	36.20	50.00
Card St. Apt. (2) A & C	22.20	36.90	59.10	42.60	64.80	48.30	70.50	53.80	76.00
Card St. Apt. (2) B	22.20	36.60	58.80	42.00	64.20	47.40	69.60	51.80	74.00
Trailer Space (Large)	20.10	15.00	35.10	15.00	35.10	15.00	35.10	15.00	35.10
Trailer Space (Small)	18.60	15.00	33.60	15.00	33.60	15.00	33.60	15.00	33.60
New Dorms—Single W/PB	13.20**	26.10	39.30	28.20	41.40	30.30	43.50	31.80	45.00
Single W/Semi PB	13.20**	22.50	35.70	24.00	37.20	25.50	38.70	26.80	40.00
Double W/Semi PB	9.30**	16.50	25.80	18.00	27.30	19.50	28.80	20.70	30.00
Old Dorms—Large Single	11.10**	15.90	27.00	15.90	27.00	15.90	27.00	15.90	27.00
Small Single	9.90**	13.20	23.10	14.10	24.00	14.10	24.00	14.10	24.00
Large Double	8.70**	10.20	18.90	11.30	20.00	11.30	20.00	11.30	20.00
Dorms 17 & 18 (Single)	12.60**	17.10	29.70	17.40	30.00	17.40	30.00	17.40	30.00
Dorms 17 & 18 (Double)	9.60**	10.80	20.40	12.00	21.60	13.20	22.80	13.40	23.00
BOQ A & D—Single (Daily Rate \$2.50)	11.40**	36.60	48.00	36.60	48.00	36.60	48.00	36.60	48.00
Double (Daily Rate \$2.00)	9.00**	27.00	36.00	27.00	36.00	27.00	36.00	27.00	36.00
BOQ B & C Single (Daily Rate \$2.00)	11.40**	26.40	37.80	26.40	37.80	26.40	37.80	26.40	37.80
Double (Daily Rate \$1.50)	9.00**	17.70	26.70	17.70	26.70	17.70	26.70	17.70	26.70
Sandquist Spa (3)	30.00	12.60	42.60	18.90	48.90	25.20	55.20	31.00	61.00

**Includes \$2.40 for linen.
The following additional monthly charge will be made for units provided with Government-owned furniture:
0 - Bedroom \$3.00
1 - Bedroom \$4.50
2 - Bedroom \$6.00
3 - Bedroom \$7.50
4 - Bedroom \$9.00
The following rates for back porch enclosures will remain in effect until a revised schedule using criteria submitted in the last appraisal can be established. The charges will not apply to back porch enclosures on units assigned prior to 1 April 1958 or to those constructed by present occupants.
Porch enclosed (80 sq. ft. or under) \$2.10
Porch enclosed (over 80 sq. ft.) \$3.90



INTENSE INTEREST is shown by students from Bishop and Lone Pine on a "Science Cruise" here last week as Master Mechanic John Trigg of the Engineering Department

explains an intricate set-up on a Schwartzkopff boring machine (one of six in U. S.) in the Michelson Lab Machine Shop. They also saw test facilities and ranges.

Community News

BURROUGHS HI JUNIOR GUEST SPEAKER

Bob Braitman, Burroughs Hi junior, will give a dramatic interpretation of "An Appeal to God" — written in the Warsaw Ghetto in 1943 — at the Hebrew Congregation Services tonight at 8:15 in the East Wing of All Faith Chapel.

ACEY-DEUCY CLUB DANCE TONIGHT

"The Tempos" under the direction of "Chuck" Messinger will furnish the music for the Acy-Deucy Club dance tonight starting at 9 p.m. The combo features Bob Young on drums, Sam Sevier, piano, Frank Lydon, bass viol and "Chuck" on clarinet and saxophone. Dinner is from 5:30 to 8 p.m.

CHAPLAIN COSTA RECEPTION SUNDAY

A reception honoring LCDr. Joseph A. Costa, recently arrived Catholic Chaplain, will be held in the East Wing of the All Faith Chapel on Sunday from 5:30 to 8 p.m.

The Planning Committee invites everyone in the Community to take this opportunity to meet the new pastor of the NOTS Catholic parish.

WOMEN'S GOLF CLUB LUNCHEON MAY 6

The China Lake Women's Golf Club will hold their monthly luncheon meeting at noon on Monday, May 6, at the Station Restaurant. All members are urged to attend for discussion and vote on the proposed constitution.

BALLET SOCIETY TO MEET TUESDAY

The spring meeting of the China Lake Ballet Society will be held Tuesday evening, starting at 8 p.m. in the Rec Hut at the east end of the Maturango Museum. Agenda will include election of officers and establishment of policy for awarding ballet scholarships.

ANNUAL RED CROSS MEETING

The annual Red Cross meeting will be held next Wednesday, May 8, at 7:30 p.m. in Room B of the Community Center. Election of officers will be the primary business.

IAM PICNIC AT INYOKERN MAY 10

Local 442 of the International Association of Machinists will celebrate the Association's 75th anniversary with a pot luck dinner on Friday, May 10, at 6 p.m. at the Inyokern Park. Members are requested to bring food for their families plus enough for two more people. Governor Brown has declared the month of May as Machinists' month in California.

WACOM OFFICER INSTALLATION MAY 14

WACOM's dinner and installation for new officers will be held at the Officers Club on Tuesday, May 14. Tickets priced at \$2.25 may be purchased from Maura McCreery, Ditty Riggs, and Ginny Ritter. The slate of nominees includes JoAnn Rusciollelli, president, Betty Lord, vice president, Marcia Donnan, secretary, and Sandy O'Mara, treasurer. Nominations may be made from the floor with prior consent of the nominee.

SWEET ADELINES INSTALL NEW OFFICERS

Officers for the 1963-64 club year of the China Lake Sweet Adelines Chapter were installed last Saturday night at the Elks Hall in Ridgecrest.

The new officers are Eleanor Hartwig, president; Madge Hartnett, vice president; June Hewitt, recording secretary; Wilene Padgett, corresponding secretary; and Jenie Ray, treasurer. Topping the installation ceremonies were renditions by the local China Dolls and Gold Tones quartets and the local chorus.

GEBHA Assessment No. 72 Is Now Due

Due to the death of Claude McDaniel an assessment of \$1.10 has been levied for GEBHA members.

The 60-year-old Public Works employee died in San Bernardino last Saturday.

His wife, Elsie, was presented a \$1,000 beneficiary check by GEBHA officials.

Assessments should be mailed to secretary - treasurer Joseph M. Becker, 77-B Renshaw.

Quips and Quotes

In rarified mountain air a climber's blood has little reserve of oxygen and he must pause every few steps to catch his breath. Bearing 30 pounds at 19,000 feet is as difficult as carrying 210 pounds at sea level.

NUDIST: The only person with less pocket space than a sailor.

NTC: A place where all the young people are full of life, happiness and the pursuit of liberty.



GLAD IT'S OVER — G. L. (Ace) Hulbert, AO1, and Don Stewart, AO1, seem relieved that their 50-mile hike is over. They left the Main Gate at 3:30 a.m. Saturday and hiked over Walker Pass to four miles the other side of Onyx, arriving there at 9:30 p.m. Just to be sure the boys covered a total of 53.8 miles. Hulbert is asst. manager of the Acy-Deucy Club while Stewart is assigned to the Naval Air Facility drone line.

Bell-Bottom Uniform Survey Is Underway

Another survey is underway to determine whether the traditional bell-bottom and jumper uniform of the nation's sailors should be changed.

A selected group of about 500 enlisted men from master chiefs down to seamen is being interviewed.

Some quarters are of the opinion that a change in the uniform may help recruiting, persuade more men to ship over for another hitch and also boost enlisted men's morale.

The men are being asked how they would feel about a single-breasted design like those of the Army, Air Force and Marines; whether they would like to wear a short Eisenhower-type jacket; and how they would take to wider use of the coat, shirt, tie and trousers outfits now reserved for chief petty officers.

Results of the survey will be sifted by a naval uniform board which will forward recommendations.

The last time the Navy made such surveys, about six years ago, the overwhelming sentiment was for keeping the present uniform.

Although the poll results "have a very important bearing on the decision," the Navy said, other factors will be considered — economy, stocks of present uniforms production, cleaning facilities and the like.

SecNav Fred Korth will make the final decision.



—Valley Independent photo
VERNA WHEELER of Inyokern holds Award of Merit presented to her for her prize geranium at the Oasis Garden Club Show at the Community Center last weekend. It also was awarded the Horticultural Sweepstakes Award.

Stricter Pet Control Urged By Council Bd. of Directors

A proposal for strengthening the control of domestic animals - particularly dogs - on Station has been forwarded to Capt. Charles Blenman, Jr., ComNOTS, by the Board of Directors of the China Lake Community Council.

The Board asks Command to issue the proposal, NOTS INSTRUCTION 5820.3A, immediately "in the interest of public health, safety and welfare."

Meanwhile the local Board may urge the Kern County Board of Supervisors to declare China Lake an urban area so that it would become subject to the County Leash Law.

Key Proposals

- 1. Any dog observed roaming unattended would be stopped by Security Police and the determination made of the owner by inspection of the dog's license.
- 2. Unlicensed dogs which trespass on an individual's yard could be apprehended by the individual and held for the Security Police.
- 3. Unlicensed dogs apprehended by Station Police would be turned over to the Kern County Rabies Control Officer for appropriate disposition under County ordinances.
- 4. Female dogs "in season" observed roaming unattended would be apprehended by the Security Police and/or the Kern County Rabies Control Officer.
- 5. Cats which become a nuisance through noise or unsanitary conditions are subject to apprehension and disposition procedure explained in Paragraph No. 1.
- 6. Any dog without a Kern County license may be picked up and impounded by the Rabies Control Officer. Animals may be recovered from the Pound within 72 hours upon payment of cost and upon inoculation and licensing of animals, or upon producing evidence of such inoculations and license currently in effect.

Two New Top Posts At Burroughs High

Two new full-time sub-administrative positions—Dean of Boys and Director of Student Activities - have been established at Burroughs High School, Principal Kenneth W. Westcott announced.

Dr. Darwin Howe has been appointed Dean of Boys. He will supervise counseling and guidance, attendance, student welfare and health services.

Neal Olsen, the present music instructor and counselor, will be Director of Student Activities, a position which includes the responsibilities of director of athletics and student council advisor.

The owner would be issued a warning in the case of first offense. The second offense involving the same dog or a dog belonging to the same owner would result in the issuance of a citation to the offending dog owner to appear before a Community Hearing Board. The case would be reviewed and appropriate action taken. The owner could appeal to the Community Policy Board and after that to the Station Commander.

For instance, for a first offense (as described in Paragraph No. 1) a fine of \$10 would be levied upon conviction. A minimum fine of \$25 would be levied for each subsequent offense. Said fines would be in addition to any cost or fee provided for in the code for the redemption and/or disposition of impounded dogs.

These were some of the honors bestowed last Saturday and Sunday at the Fifth Annual Standard Flower Show sponsored by the Oasis Garden Club at the Community Center. More than 300 persons attended the "Passport to Flowers" event.

Alice's winning entry in the artistic division for amateurs was "Oriental Interlude." "Safari Into Africa" won for Joyce, and Verna's geranium was described as the "most amazing" ever seen by local gardeners.

First place in the invitations division of table settings was won

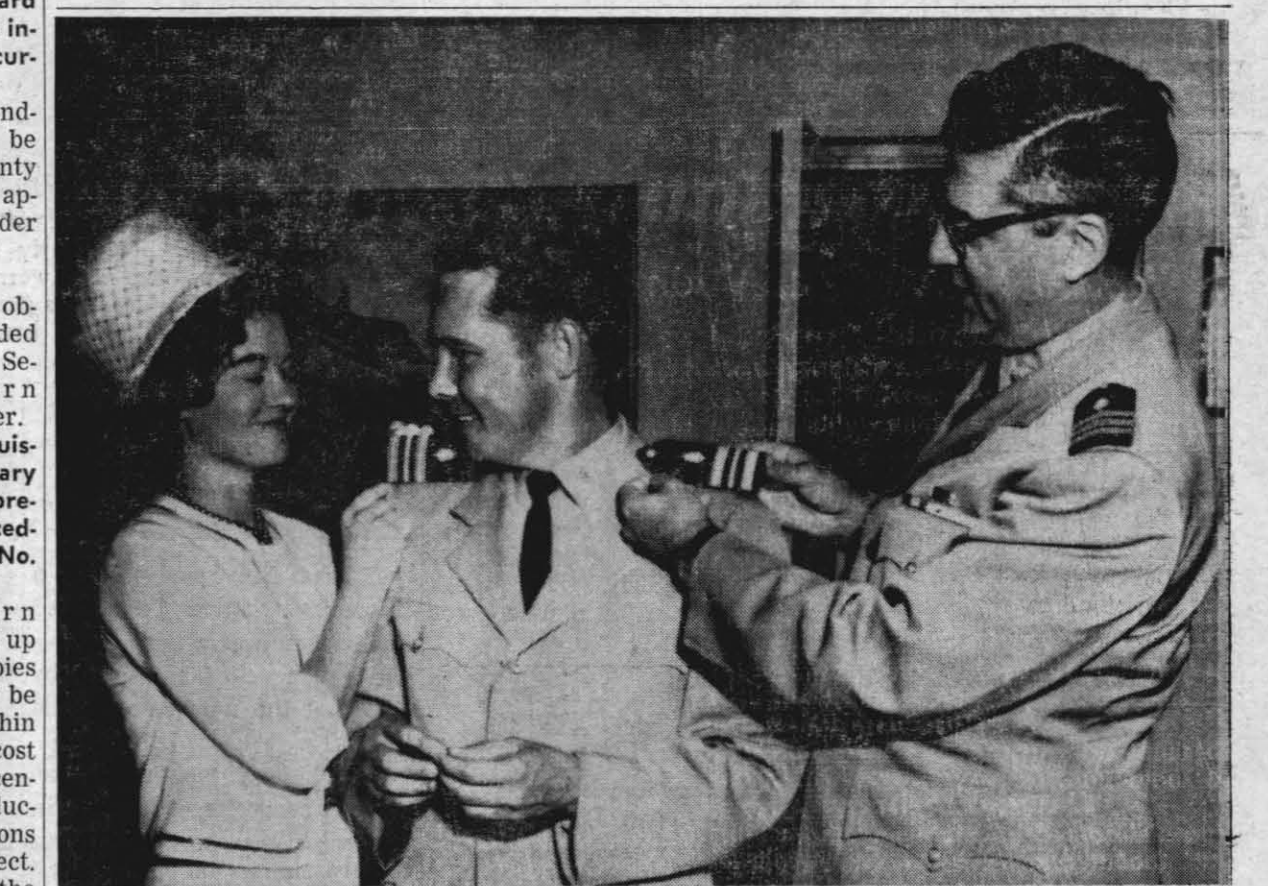
OGC Show Proves IWV 'Green Thumb'

The Award of Distinction to Alice Hirsch . . . The Artistic Sweepstakes for novices to Jayce Stebold . . . The Award of Merit and Horticultural Sweepstakes to Verna Wheeler . . .

by Rose Merriam's arranging for the American Red Cross; second place by Virginia Millett for the Friends of the Maturango Museum, and third place by Joan Higgs for the American Association of University Women.

Scores of other awards went to winners in a variety of divisions, proving that Indian Wells Valley residents certainly do have the proverbial "green thumb."

The judges of the impressive show included Mrs. Donald George, Mrs. Philip Bueckner and Don Bumbaugh.



WINS PROMOTION—Dr. Tommy Kent gets an assist from his wife, Geneva, and Senior Medical Officer Cdr. R. B. Speaker with his new Lieutenant Commander shoulder boards. A graduate of Baylor University's College of Medicine, Kent reported to the Station Hospital Dec. 30, 1961. He served his internship at San Diego Naval Hospital.

A Flag in Every Home is FRA Goal

A nationwide project planned to put a United States flag in every home for display on national holidays has been initiated by the Fleet Reserve Association.

Called "Operation Red, White and Blue," the campaign began May 1 and will continue through Flag Day, June 14. It is a non-profit flag selling project.

The public can purchase a two-by-three foot, 50-star all-weather flag with a staff and bracket for home mounting for \$1.25 during this campaign. A three-by-five foot flag costs \$3.00. These are "at cost" prices.

Station personnel may place orders to purchase their flags from Harold D. Stalnaker, president of the local chapter of the Fleet Reserve Association. Phone FR 5-2637.

Rates for Drop-In Nursery and Day Nursery

NAVY EXCHANGE DROP-IN NURSERY			CHINA LAKE DAY NURSERY		
Schedule and Rates			Tuition Schedule		
MONDAY THROUGH FRIDAY — 7:15 A.M. TO 5:00 P.M.			MONDAY THROUGH FRIDAY — 7:00 A.M. TO 5:00 P.M. (Except Civil Service Holidays)		
	Cost Per Family		All figures given are monthly rates. Morning and afternoon snacks are included in fees.		
Daily Rate	One Child	Additional Child	Days Per Week Enrolled	2	3
Half Day (5 hours)	\$ 1.75	\$.90	Full Day, Including Lunch	\$30.50	\$39.00
Half Days (per week)	7.00	3.60	Half Day, Including Lunch	17.50	26.00
Full Day (9 hours)	2.75	1.25	Half Day, Without Lunch	16.00	22.75
Full Days (per week)	11.00	5.00	Half Day, Without Lunch		30.50
			School Children (1st, 2nd, 3rd grades):		
			2 Hours/Day	\$19.50	Per Month
			3 Hours/Day		29.25
			Extra Lunches (when not included in tuition)	\$.30	each
			FAMILY DISCOUNTS		
			2 Children in Family Enrolled	10% off total tuition fees	
			3 Children in Family Enrolled	20% off total tuition fees	
			EXTRA PARTICIPATION		
			(In addition to regular enrollment on a space-available basis.)		
			Drop-in: \$1.00 for any part of the first 2 hours, then \$.50 per hour up to half- or full-day rate.		
			Half-Day Without Lunch	\$1.75	
			Half-Day With Lunch	2.00	
			Full Day	3.50	
Hourly Rate					
	One Child	Additional Child			
One Hour	\$.35	\$.10			
One Half-Hour	.20	.10			
Snack	.10	.10			
Hot Lunch	.30	.30			

Note: A charge of 50 cents per child will be made for each 15-minute period a child is left at the center after regular closing time.

For additional information, phone Ext. 723723.

For additional information phone Ext. 71398.