

FIRST CONTRIBUTIONS MADE—China Lake United Fund Drive Chairman Jim Judin (left) is presented two checks by Station Commander Capt. F. L. Ashworth. The two checks represent Capt. Ashworth's

personal contribution to United Fund and a contribution from a recent group of visitors. The contributions are the first to be made and kick-off the campaign that begins tonight.



READING IMPROVEMENT—Burroughs High School students improve their reading in a special developmental reading class designed for average and above average students by the use of reading pacers and an electric timer. Pictured above reading (l. to r.) are: Kaye Reynolds and Rita Lane while Radford Bushnell operates the time-recorder.

### Burroughs Accents Improvement Of Students' Reading Techniques

Accenting improvement, in reading speed and reading techniques for both average and superior students, a developmental reading program is being given this semester at Burroughs High School.

Instructed by Miss Mary E. Lee, the program is planned both to improve the reading skills of students with average or better intelligence test ratings who are reading below grade level and to accelerate the reading speed and improve the techniques of superior students reading adequately but not up to full potential.

**Specific Skills**  
Specific skills stressed include study-type reading, critical reading, phonetics and skim reading. Special instructional methods used in conjunction include the audio-visual aids of the tachistoscope, which helps in increasing eye-span, the speed of seeing words and the building of vocabulary, and the reading pacer machine which assists in increasing the rate of reading lines. Progress in development of reading techniques is both checked and assisted by the use of timed reading tests with questions to check

comprehension; standardized grade level tests, vocabulary assignments and tests and daily assignments in both special reading and reading material for the student's other courses of study.

**Method of Selection**  
Selected after consultations of the students, teachers, counselors and vice-principal and Miss Lee, the students attend the course for six or nine weeks as a part of their English and social studies period. The developmental reading program is being conducted in member schools of the Kern County Union High School and Junior College District under the direction of Dr. Wilson Stone, Supervisor of Reading Instruction, who has completed special studies in the field.

Students at Burroughs are divided into the two class groups of developmental reading and the advanced developmental reading. This is the second year of the program.

### The Captain's Proclamation

America is the land of the free, and of the strong. America's greatness has come from her strength; her strength has arisen from the great heart of her people. Americans who differ in politics or religion join shoulder to shoulder in perfect harmony when asked to give from the heart. Now this time has come upon us once again.

The United Fund Drive is getting under way. A United Fund that will give aid and

assistance to ten agencies—Boy Scouts, Girl Scouts, American Heart Association, Red Cross, American Cancer Society, Desert Area Emergency Relief, Desert Area Family Service, Valley Recreation Council, USO, and Rand District Cemetery.

I urge all citizens of China Lake and Ridgecrest to give to this Indian Wells Valley United Fund Drive . . . Give and help keep America strong.

## YOUR UNITED FUND AGENCIES

### American Cancer Society

Supports a program in medical research at more than 150 hospitals and universities. Each year, they give special training to doctors in diagnosis and treatment. Their educational program teaches millions the danger signs of cancer. Goal: \$2,500.

### American Heart Association

Works through research, community service and education to assist both lay and medical people in combating and preventing heart disease. Goal: \$2,000.

### American National Red Cross

Spent \$10 million rebuilding Yuba City. Provides services for NOTS sailors, Marines and their families in emergencies. Provides nursing facilities for Infirmary and Hospital. Gives courses in swimming safety and parent-child nursing. Goal: \$6,000.

### Boy Scouts of America

Builds character, develops full personalities and prepares for citizenship. 681 local Scouts pay their own way for personal items, earn money for troop activities. Community must defray council management expenses and cost of professional training for the 232 volunteer adult leaders in this area. Goal: \$7,150.

### Desert Area Emergency Relief

This group provides assistance in emergency hardship cases until aid from the county can be obtained. Purchase orders are granted to disabled families and the destitute are assisted in re-locating. Children are cared for. Goal: \$1,000.

### Desert Area Family Service

Gives professional counsel on family relations, marital difficulties, teenage problems and the crises that attend physical and mental illness. Last year, 116 families were given vitally needed assistance through Family Service. Support of the State's Mental Health funds (\$2,500 for '56) has been temporarily withdrawn; therefore Family Service looks solely to United Fund for the backing to continue their basic service. Goal: \$6,251.

### Girl Scouts of America

663 Girl Scouts in the Valley learn good citizenship and build character during their formative years. Parent support, cookie and calendar sales pay for many activities, including camping at Mountain Meadows in the Greenhorns, but they need community support for Council management and training of 200 adult leaders. Goal: \$5,292.

### Valley Recreation Council

Swimming, handicrafts, music, canteens—good recreation for the young population of our desert community is a civic necessity. A special success was the 5-week summer program shared by 500 youngsters. Supported by Kern County, they need help for expendable materials. Goal: \$2,440.

### Rand District Cemetery

Use of this historic cemetery is free to Valley citizens. Donations are needed for keeping records and general maintenance. Goal: \$200.

### United Service Organizations

In peacetime USO serves many welfare needs of men and women in the armed forces. Member agencies are YMCA, National Catholic Community Service, National Jewish Welfare Board, YWCA, Salvation Army, Traveler's Aid Association, Camp Shows. Goal: \$984.

### True Voluntary Giving Urged as Workers Begin Solicitations; Give Once for All

A volunteer worker, perhaps your next door neighbor, will soon be calling on you for your contribution to United Fund for 1956-57. The worker will have a "pledge card" for you to fill out and on which you may indicate specific amounts as to your choice of the agency (or agencies) to whom you wish your money to go. Such earmarked monies will be transmitted by the United Fund Board of Directors exactly as you designate. If you wish to make an undesignated donation to support all United Fund agencies, you may do so. Your contribution will be distributed among the agencies proportionate with your contribution. A quarterly payment plan has been arranged for those who wish to budget their contribution. Divide your total donation into four parts and enter these payments on the "pledge card." Your quarterly payment will then be made every three months and a reminder will be forwarded to you with a return envelope for your convenience. GIVE GENEROUSLY—GIVE ONCE AND FOR ALL THE UNITED WAY.



INSPECTION CEREMONY—Naval Reserve Civil Engineering Co. 11-23 (non-pay) is converted to Naval Reserve Construction Battalion Division 11-2 (pay status) at activation ceremonies. Capt. A. D. Hunter, USN, (right) IIND District Civil Engineering Officer and IIND Public Works Officer conducts inspection ceremony. Members of the China Lake reserve unit shown (l. to r.) are: Frank DeLeon, BUL2; J. D. Smith, CMG1; Herb Jones, CMGCA; Sam Stanley, BMGC; and Lt. Paul O. Erickson, USNR.



## GIVE ONCE... THE UNITED WAY



George Padgett  
Second Vice-President



Art Reich  
Treasurer



John Emery  
President



Amy Griffin  
Secretary



Dr. R. D. Potter  
First Vice-President

THEY HEAD THE IWV UNITED FUND—These five volunteer workers will provide the leadership for the Indian Wells Valley United Fund Drive which will begin with a kick-off rally at the Burroughs High School cafeteria tonight. As officers in the Drive

they will give last minute instructions to the 550 lieutenants who will assist them by handling fund solicitations for the campaign. Tonight's rally will feature talks by Capt. F. L. Ashworth and United Fund President John Emery.

### Council Slates Election; Lists All Petitioners

The election of directors of the China Lake Community Council will be held on November 6, 1956, during the same time that the county polls are open. The Community Council polls will be located adjacent to the county polls and will be approximately 100 feet away.

All residents of China Lake are urged to vote in the council election for the candidate of their choice in order to assure proper representation.

The candidates for vacancies on the Community Council are:

- Precinct 1 (1 vacancy):**  
G. W. (Gerry) Hurst. On Station 6 years. Guided Missile Design Engineer, Aviation Ordnance Dept. Mrs. R. H. (Marion) Olds (incumbent) On Station 9 years. Community Council director for 4 years. 1954-5 President of Community Council.
- Precinct 2 (1 vacancy):**  
Mrs. H. S. (Polly) Connable On Station 12 years. Former draftsman, Test Dept. Has worked previously with Community Council. Melvin Morrison On Station 5 years. Ordnanceman, Test Dept.
- Precinct 3 (2 vacancies):**  
A. P. (Pat) Elder. On Station 4 years. Mechanical Engineer, Aviation Ordnance Dept. R. J. (Bob) Hoagland. On Station 9 years. Packaging Design Specialist, Engineering Dept. H. T. (Ted) Lotee. On Station 9 years. Ordnance Engineer, Rocket Development, Mechanical Engineer, Aviation Ordnance Dept.
- Precinct 4 (1 vacancy):**  
Mrs. Johnnie Bales. (Continued on Page 2)



NOTS SHARPSHOOTERS—G. W. Sullivan, NOTS security police chief, presents the pistol team trophy to Captain F. L. Ashworth, Station commander. The NOTS pistol team won the trophy for the fifth straight year at the competition sponsored by the 11th ND in San Diego.

### NOTS Security Police Pistol Team Cops Fifth Straight District Trophy

Station Commander F. L. Ashworth was directed with the Commandant's (1IND) Trophy emblematic of superior pistol marksmanship in competition with other civilian naval guard forces of the Eleventh Naval District. The competition was conducted at Camp Matthews, San Diego, California, last Friday. Presenting the trophy was Chief of Security Police, G. L. Sullivan, in behalf of his marksmen, who have brought the perpetual trophy to NOTS each year since its inception in 1952.

The winning NOTS team was comprised of: W. E. O'Neill, team captain; J. E. Dowd; J. Cleveland and W. B. McCreary who fired a score of 978 out of a possible 1200 (the highest total of any of the previous winning teams).

NOTS was also represented by two additional teams. Team Two, which finished fifth in the team competition, comprised of L. C. Schaller, W. D. Schaller, A. R. Caro, and D. T. Mooney. Team Three, which finished third, included O. L. Walker and A. C. Jones, both from China Lake, and W. V. Upshaw and H. C. Lakes from Pasadena Annex.

In conjunction with the team event, an individual competition was held in which NOTS personnel showed admirably. Of the twelve individual awards, NOTS won seven, including the best 38-caliber pistol shot in the competition. John Caro, fourth; D. T. Mooney, fifth; E. Dowd retained his individual

### Giant Rally Signals Beginning Of Local United Fund Drive

Tonight the United Fund drive will get under way with a kick-off rally at the Burroughs High School cafeteria at 7 o'clock. Participating in the program which will launch approximately 550 volunteer workers into the 1956-57 Indian Wells Valley drive will be Captain F. L. Ashworth, station commander, Chaplain James L. Carter, United Fund President John Emery, James Judin, chairman of the fund committee, the Burroughs High School girls' glee club, directed by Dean Skeels, the Burroughs High School orchestra, directed by George Carson, and the China Lake Players.

All volunteer workers are urged by the United Fund President Emery to attend the interest packed kick-off rally. James Judin will present a film depicting the need for supporting the United Fund program. The film also includes instructions for area lieutenants who will handle the fund collections. The China Lake Players will dramatize the significance of the campaign in a series of skits. The rally will last about one hour.

Fund Committee Chairman Judin reports that eight of the ten Area Captains have been selected but that Captains are needed for Area 4 and Area 9. Captains selected to date are: John Lewis, Area 1; Ed Sopke, Area 2; Bob Blaise, Area 3; Robert Emerson, Area 5; John Boyle, Area 6; Roy Rogin, Area 7; Rose Merriam, Area 8 and Ray Becker, Area 10.

"If you want to experience 'true voluntary giving' of your time and effort to help your fellow man and community there is no better medium than that of an Area Captain," says Judin. Those who would like to participate as Area Captains may offer their services at the rally or call extension 77652.

Residents of China Lake, Ridgecrest and Inyokern have been periodically informed during the past months about the functions and programs of the local and national affiliated social service agencies of the Indian Wells Valley United Fund.

To summarize, the concept of a United Fund campaign for the desert area materialized from the local Community Chest drive of 1954. The following year, the United Fund attained incorporated status in Indian Wells Valley, the first campaign was conducted, and as a result a total of \$23,091 was distributed among six local affiliated agencies, and 38 "write-in" agencies. In furtherance of the basic con-

### 'PW Club' Slates Local Talent Show

NOTS annual amateur show, sponsored by Public Works Employees' Club, is scheduled for October 30 in the Station Theatre at 7 p.m. Additional entertainment features are planned to make the show a success.

Public Works Employees' Club was organized in 1948 as a result of a money surplus from a farewell party. In order to dispose of the money wisely, a committee was organized, by-laws written and the largest employee organization on the Station at that time was formed. In December of that year, the first children's Christmas party was given. The following spring, they staged their first amateur show. Since then, the annual Christmas party has become a ritual and the proceeds of the yearly amateur shows provide the funds to support the Christmas parties.

Admission to the forthcoming amateur show will be 75 cents for adults, 50 cents for elementary and high school children, and service-men. Tickets are available from representatives of Public Works Department or at the Station Theatre.

### 'Care Enough . . . Share Enough,' Says President Dwight Eisenhower

"There is no such thing as a healthy nation without strong, healthy communities. And the community is strong and healthy only when its citizens care enough and share enough to make it that way.

"For us Americans, whatever our politics, racial background or religious faith, there is only one answer, and it is an answer that expresses a genuine and heartfelt concern for our fellow man.

"So, I am sure that when the volunteer worker knocks at your door and heart, and asks you to sign a pledge for the United Community Campaigns, you will join me with a three-word answer, 'Yes, I will!'"

# ROCKETEER

Published every Friday at the UNITED STATES NAVAL ORDNANCE TEST STATION CAPTAIN F. L. ASHWORTH, UNITED STATES NAVY Commander

The Rocketeer, an authorized Navy publication is printed weekly by Hubbard Printing, Ridgecrest, Calif., with appropriated funds and in compliance with NAVEXOS P-35, Rev. November, 1945. The Rocketeer receives Armed Forces Press Service material which may not be reprinted without AFPS permission. All photographs are official U. S. Navy photos, unless otherwise specified. Deadlines: News stories, Tuesday, 4:30 p.m.; photographs, Tuesday, 11:30 a.m.

F. ED. LANEY Editor BUDD GOTI Assistant Editor  
Phillips Wair, Editorial Clerk; Peg Gregory, Annex Correspondent (Foothill, phone Ext. 35); Art by Illustration Group, Technical Information Department. Photography by Rocketeer Photo Staff—T. E. Long PH2; Ken Anhalt, PH2. Photographers for the Pasadena columns are: Ray Mansson, A. E. Block, and Jeanne Smith. Office Building 35, Top Deck—Telephone 71354, 72082, 71655



UNITED THEY STAND—Principals in the local United Fund Drive discuss campaign procedure and review a poster to be used in the all-out appeal for donations which will begin tonight. They are: (l. to r.) J. P. Judin, campaign chairman, Eleanor Henderson, campaign captain for Inyokern, and Ken Day, campaign captain for Ridgecrest.

## United Fund Campaign

**What Is It?**  
The biggest voluntary philanthropic challenge in the world—the good neighbor policy reigns supreme in this humanitarian effort for financial support of local, state and national health, recreation, welfare and defense related agencies.

**How Much Has to be Raised?**  
The campaign goal in Indian Wells Valley is \$50,000. Each community, in the United Fund way of giving, determines its own local goal on the basis of local needs.

**When Does the Campaign Take Place?**  
The kick-off is tonight. Hundreds of local citizens will volunteer their time to help their neighbors. A member of one of the campaign teams will be calling on you between now and November 9 for your contribution.

**Who Gives?**  
Everyone that is financially able. Thousands of Indian Wells Valley citizens gave generously to United Fund last year and even better support is anticipated this year.

**Who Benefits?**  
One out of every three Indian Wells Valley residents will be aided in one way or another and all residents will receive benefits because of a better community that is built by United Fund.

**Why the 'United Way'?**  
Because it eliminates multiple campaigns by combining many into one.

Because it raises more money in a joint drive than the individual agencies can raise separately.

Because it reduces campaign costs—only one overhead instead of many.

Because it makes it easy to give generously once a year, helping many causes.

Because it protects the giver from charity rackets and from giving haphazardly.

Because it saves time for volunteer workers: they have to work in only one campaign—the united way—in place of working in a series of campaigns.

### THIS IS YOUR UNITED FUND—SUPPORT IT



UNITED FUND DRIVE KICK-OFF—Burroughs High School Girls' Glee Club will participate in the UF Drive kick-off to be staged tonight in BHS cafeteria at 7 p.m. Pictured above in front row (l. to r.) are: George A. Carson, BHS band leader; V. Dean Skeels, Glee Club director; Mecham, and Linda Cowan. Shown in back row (l. to r.) are: Myrna Carter, Marsha Parks, Marion Hamilton, Sheila Gilpin, Sharon Christie, Florence Raffel, Tiona Willis, Carol Knigge, Nancy Musser, Rebecca and Sally Walker.

## Council Slates Election; Lists All Petitioners

(Continued from Page 1)

On Station 5 years. Mathematics Aid, Aviation Ordnance Dept.

R. H. Booth. On Station 4 years. Electronics Mechanic, Aviation Ordnance Dept.

On Station 3 years. Electrical Engineer, Aviation Ordnance Dept.

J. A. Everett. On Station 10 years. Electronic Technician, Test Dept. Has worked previously with Community Council.

Rex L. Smith. On Station 8 years. Chemist, Rocket Development Dept. Has worked previously with Community Council.

On Station 2 years. Chemical Engineer, Propellants and Explosives Dept.

On Station 5 years. Mathematical, Test Dept. Little League President, 1955.

James Sims. On Station 2 years. Chemical Engineer, Propellants and Explosives Dept.

On Station 1 year. Chemical Engineer, Propellants and Explosives Dept.

On Station 6 years. Experimental Machinist, Engineering Dept.

On Station 6 years. Mrs. M. E. (Bobbi) Miller. On Station 6 years. Former secretary, Aviation Ordnance Dept.

Joseph E. Stone. On Station 2 years. Standards Lab Supervisor, Engineering Dept. Sponsor of Junior Archers.

On Station 2 years. Mechanical Engineer, Engineering Dept.

Sol Sherman (incumbent). On Station 2 years. Security Policeman, Command Administration Dept.

On Station 1 year. Secretary, Rocket Development Dept.

On Station 1 year. Employee of Engineering Dept. Registered Nurse.

For the convenience of China Lake residents, a map showing the precincts for voting in the Community Council as well as the national elections will be published in the next issue of the Rocketeer.

Blank spaces also will be provided on the pledge card in which donors may designate contributions to social service agencies which the United Fund does not represent. A reminder list of such recognized agencies will be provided.

In urging all-out support for the United Fund, President Emery said: "In your gift to United Fund is really your power—your power to help. It is not merely an outright donation, it's a good investment. You get it back all year in the saving of human lives and health."

Two grand marches are planned for the elementary grades. Kindergarten and first grade children will march at 4:30 p.m.; second through sixth grade children will march at 5:30 p.m. Each child will receive a prize for marching in the parade. Special prizes will be given to children wearing the most original, the funniest, or the spookiest costumes.

Persons wishing to do so may make an undesignated donation in support of all the listed agencies, in which case the United Fund directors will handle its eventual distribution.

Blank spaces also will be provided on the pledge card in which donors may designate contributions to social service agencies which the United Fund does not represent. A reminder list of such recognized agencies will be provided.

In urging all-out support for the United Fund, President Emery said: "In your gift to United Fund is really your power—your power to help. It is not merely an outright donation, it's a good investment. You get it back all year in the saving of human lives and health."

Two grand marches are planned for the elementary grades. Kindergarten and first grade children will march at 4:30 p.m.; second through sixth grade children will march at 5:30 p.m. Each child will receive a prize for marching in the parade. Special prizes will be given to children wearing the most original, the funniest, or the spookiest costumes.

Persons wishing to do so may make an undesignated donation in support of all the listed agencies, in which case the United Fund directors will handle its eventual distribution.

Blank spaces also will be provided on the pledge card in which donors may designate contributions to social service agencies which the United Fund does not represent. A reminder list of such recognized agencies will be provided.

In urging all-out support for the United Fund, President Emery said: "In your gift to United Fund is really your power—your power to help. It is not merely an outright donation, it's a good investment. You get it back all year in the saving of human lives and health."

Two grand marches are planned for the elementary grades. Kindergarten and first grade children will march at 4:30 p.m.; second through sixth grade children will march at 5:30 p.m. Each child will receive a prize for marching in the parade. Special prizes will be given to children wearing the most original, the funniest, or the spookiest costumes.

Persons wishing to do so may make an undesignated donation in support of all the listed agencies, in which case the United Fund directors will handle its eventual distribution.

Blank spaces also will be provided on the pledge card in which donors may designate contributions to social service agencies which the United Fund does not represent. A reminder list of such recognized agencies will be provided.

In urging all-out support for the United Fund, President Emery said: "In your gift to United Fund is really your power—your power to help. It is not merely an outright donation, it's a good investment. You get it back all year in the saving of human lives and health."

Two grand marches are planned for the elementary grades. Kindergarten and first grade children will march at 4:30 p.m.; second through sixth grade children will march at 5:30 p.m. Each child will receive a prize for marching in the parade. Special prizes will be given to children wearing the most original, the funniest, or the spookiest costumes.

Persons wishing to do so may make an undesignated donation in support of all the listed agencies, in which case the United Fund directors will handle its eventual distribution.

Blank spaces also will be provided on the pledge card in which donors may designate contributions to social service agencies which the United Fund does not represent. A reminder list of such recognized agencies will be provided.

In urging all-out support for the United Fund, President Emery said: "In your gift to United Fund is really your power—your power to help. It is not merely an outright donation, it's a good investment. You get it back all year in the saving of human lives and health."

Two grand marches are planned for the elementary grades. Kindergarten and first grade children will march at 4:30 p.m.; second through sixth grade children will march at 5:30 p.m. Each child will receive a prize for marching in the parade. Special prizes will be given to children wearing the most original, the funniest, or the spookiest costumes.

Persons wishing to do so may make an undesignated donation in support of all the listed agencies, in which case the United Fund directors will handle its eventual distribution.

Blank spaces also will be provided on the pledge card in which donors may designate contributions to social service agencies which the United Fund does not represent. A reminder list of such recognized agencies will be provided.

In urging all-out support for the United Fund, President Emery said: "In your gift to United Fund is really your power—your power to help. It is not merely an outright donation, it's a good investment. You get it back all year in the saving of human lives and health."

Two grand marches are planned for the elementary grades. Kindergarten and first grade children will march at 4:30 p.m.; second through sixth grade children will march at 5:30 p.m. Each child will receive a prize for marching in the parade. Special prizes will be given to children wearing the most original, the funniest, or the spookiest costumes.

Persons wishing to do so may make an undesignated donation in support of all the listed agencies, in which case the United Fund directors will handle its eventual distribution.

Blank spaces also will be provided on the pledge card in which donors may designate contributions to social service agencies which the United Fund does not represent. A reminder list of such recognized agencies will be provided.

In urging all-out support for the United Fund, President Emery said: "In your gift to United Fund is really your power—your power to help. It is not merely an outright donation, it's a good investment. You get it back all year in the saving of human lives and health."



VISITS HOME OF SIDEWINDER — Under Secretary of the Navy Thomas S. Gates chats with Station Commander Capt. F. L. Ashworth. The Under Secretary complimented NOTS on its development of SIDEWINDER and other great research projects. Gates' visit here is part of a West Coast tour of Navy installations.

## Local United Fund Sets \$50,000 Goal BuOrd Group Visits NOTS

(Continued from Page 1) eventually attains maturity. The campaign goal this year is \$50,000, which drive officials feel can be reached by only a slight increase in the individual donor's awareness to human needs about him.

United Fund is an organization set up for the sole purpose of serving the community. It is managed by elected volunteer directors. Officers, in addition to Emery, are R. D. Potter, first vice-president; George Padgett, second vice-president; Amy Griffin, secretary, and Art Reich, treasurer.

Planning for the collection of funds is being carried out by the campaign committee headed by James Judin. He is being assisted by committee members Ken Day of the California Electric Power Co. in Ridgecrest, who is the campaign captain for Ridgecrest and the Wherry housing area; Commander Ken Wallace, USN, who is in charge of the advance donor campaign, and R. A. Blaise, who is working with Cdr. Wallace.

The advanced donor drive, which was started Oct. 5, includes the collection of United Fund donations from Navy Station contractors and Ridgecrest business organizations.

Eleanor Henderson of Inyokern has been appointed to serve as campaign captain in that area.

Chairmen of other United Fund committees are Robert C. Nelligan, budget and admissions; Chaplain Carter, social planning, and R. O. Huse, publicity.

Chairman Judin's campaign committee is already mobilized and ready for extensive action during the period Oct. 26 through Nov. 9. The campaign will be conducted the same as that of last year, with volunteer workers calling on their neighbors. Each worker will have a pledge card on which the prospective donor will be invited to designate specific amounts for the United Fund agencies of their choice.

Persons wishing to do so may make an undesignated donation in support of all the listed agencies, in which case the United Fund directors will handle its eventual distribution.

Blank spaces also will be provided on the pledge card in which donors may designate contributions to social service agencies which the United Fund does not represent. A reminder list of such recognized agencies will be provided.

In urging all-out support for the United Fund, President Emery said: "In your gift to United Fund is really your power—your power to help. It is not merely an outright donation, it's a good investment. You get it back all year in the saving of human lives and health."

Two grand marches are planned for the elementary grades. Kindergarten and first grade children will march at 4:30 p.m.; second through sixth grade children will march at 5:30 p.m. Each child will receive a prize for marching in the parade. Special prizes will be given to children wearing the most original, the funniest, or the spookiest costumes.

Persons wishing to do so may make an undesignated donation in support of all the listed agencies, in which case the United Fund directors will handle its eventual distribution.

Blank spaces also will be provided on the pledge card in which donors may designate contributions to social service agencies which the United Fund does not represent. A reminder list of such recognized agencies will be provided.

In urging all-out support for the United Fund, President Emery said: "In your gift to United Fund is really your power—your power to help. It is not merely an outright donation, it's a good investment. You get it back all year in the saving of human lives and health."

Two grand marches are planned for the elementary grades. Kindergarten and first grade children will march at 4:30 p.m.; second through sixth grade children will march at 5:30 p.m. Each child will receive a prize for marching in the parade. Special prizes will be given to children wearing the most original, the funniest, or the spookiest costumes.

Persons wishing to do so may make an undesignated donation in support of all the listed agencies, in which case the United Fund directors will handle its eventual distribution.

Blank spaces also will be provided on the pledge card in which donors may designate contributions to social service agencies which the United Fund does not represent. A reminder list of such recognized agencies will be provided.

In urging all-out support for the United Fund, President Emery said: "In your gift to United Fund is really your power—your power to help. It is not merely an outright donation, it's a good investment. You get it back all year in the saving of human lives and health."

Two grand marches are planned for the elementary grades. Kindergarten and first grade children will march at 4:30 p.m.; second through sixth grade children will march at 5:30 p.m. Each child will receive a prize for marching in the parade. Special prizes will be given to children wearing the most original, the funniest, or the spookiest costumes.

Persons wishing to do so may make an undesignated donation in support of all the listed agencies, in which case the United Fund directors will handle its eventual distribution.

Blank spaces also will be provided on the pledge card in which donors may designate contributions to social service agencies which the United Fund does not represent. A reminder list of such recognized agencies will be provided.

In urging all-out support for the United Fund, President Emery said: "In your gift to United Fund is really your power—your power to help. It is not merely an outright donation, it's a good investment. You get it back all year in the saving of human lives and health."

Two grand marches are planned for the elementary grades. Kindergarten and first grade children will march at 4:30 p.m.; second through sixth grade children will march at 5:30 p.m. Each child will receive a prize for marching in the parade. Special prizes will be given to children wearing the most original, the funniest, or the spookiest costumes.

Persons wishing to do so may make an undesignated donation in support of all the listed agencies, in which case the United Fund directors will handle its eventual distribution.

Blank spaces also will be provided on the pledge card in which donors may designate contributions to social service agencies which the United Fund does not represent. A reminder list of such recognized agencies will be provided.

In urging all-out support for the United Fund, President Emery said: "In your gift to United Fund is really your power—your power to help. It is not merely an outright donation, it's a good investment. You get it back all year in the saving of human lives and health."

Two grand marches are planned for the elementary grades. Kindergarten and first grade children will march at 4:30 p.m.; second through sixth grade children will march at 5:30 p.m. Each child will receive a prize for marching in the parade. Special prizes will be given to children wearing the most original, the funniest, or the spookiest costumes.

Persons wishing to do so may make an undesignated donation in support of all the listed agencies, in which case the United Fund directors will handle its eventual distribution.

Blank spaces also will be provided on the pledge card in which donors may designate contributions to social service agencies which the United Fund does not represent. A reminder list of such recognized agencies will be provided.

In urging all-out support for the United Fund, President Emery said: "In your gift to United Fund is really your power—your power to help. It is not merely an outright donation, it's a good investment. You get it back all year in the saving of human lives and health."



Beverly A. Johnson



## The Distaff Side

This is a success story! It's the story of a young girl armed with a high school diploma, high ideals, and a willingness to work.

Beverly A. Johnson, newly appointed head of Administrative Staff in Technical Information Department was this girl in 1940 when she graduated from high school in Cleveland, Ohio. Soon after this, she moved to Pasadena where she met and married her husband Noel, a current employee in Propellants and Explosives Department.

Being a young woman with strong family ties, Beverly came to NOTS in October, 1948 to be near her mother, Mrs. Ann Seltz, present hostess at the Community Center who had been here since 1946.

Her first job on the Station was as Mail and File Clerk GS-2 in Supply and Fiscal Department in February, 1949. Six months later, she was promoted to Property and Supply Clerk GS-3. After one year in Supply, she qualified for a stenographic position at the same grade and worked for Dr. Wiegand, then division head for Rockets and Explosives.

Nine months later, in December, 1950, she was promoted to the GS-4 level. When Dr. Wiegand was re-assigned to associate department head in October, 1951, he took his secretary with him. By this time, Beverly's scope of responsibilities had grown proportionately to warrant another promotion to Secretary GS-5.

In February, 1953, she began to assume the duties of Administrative Aide. When the department was reorganized in December, 1954, she was elevated to the position of Administrative Assistant GS-7 to be Head of Planning Staff. This position later developed into that of Head, Administrative Branch with duties of coordinator for all personnel functions of the department. She formulated special departmental reports, had responsibility for security and safety functions as well as organizational and methods operational duties. This experience qualified Beverly for her recent assignment at the GS-9 level with TID.

This is what Beverly did in less than 8 years. But how she accomplished all this is the impressive part of her story. Her modest comment was simply: "I've been very lucky!" As she spoke, it became evident that the "luck" she referred to was not a rabbit's foot or the luck of the Irish. It was the good fortune of having had supervisors who possessed the virtue of appreciation.

"It all started with Dr. Wiegand," she added. "He knew how to delegate authority and responsibility to his employees. He encouraged his staff to grow. Those of us who were willing to learn and work were promoted accordingly. And to think how scared I was when I was selected to become his secretary."

Beverly contends that: "This appreciation of her efforts fired her with the ambition to succeed as a career woman. Unfortunately, many women with high potential abilities lose hope because their supervisors fail to recognize their capacity for leadership."

If health, good grooming, and personality are essential to success, Beverly is a good example of these requirements. Her work is not just a job—but an opportunity for doing work she enjoys.

## Coming AND Going

### New Employees:

Public Works—Marie A. Michel, Patricia A. Combs, Merle H. Paschke, Emil Pfender, Jack L. Herbstreit, Thomas J. Sellars, Trussie O. Deaver, Norman A. Bernard, Jean G. Warnageris, Francis L. Sims, Leatrice J. Harrelson, Jesus C. Young.

Propellants & Explosives—Joseph J. Atkins, Henry L. Coles.

Technical Information—Edna L. Young, Antoinette A. Emerson.

Naval Air Facility—Deirdre J. Fraser.

Test—Henry F. Pearl.

Rocket Development—Philip E. Palm, Elizabeth T. Martin.

Supply—Mavis C. Francis.

Research—Verner Schomaker.

Personnel Training—Kelly G. Skinner, Richard K. Miller, Rudy A. Herrera, Byron W. KinKennon, Vance E. Oldfield, Leonard G. Terrel, Paul E. Stewart, William L. Beedle, Michael H. Hetrick, Adrian G. Milbrath, Daniel C. Lydon, Donald R. Wittenbrink, Anthony Noto Willard F. Simpson, Robert H. Glaque, Willard L. Shafer.

Command Administration—Beverly L. Thompson, Frances J. Greason, Marie M. Beckman, Ralph B. Hardesty.

Engineering—Mary M. Cashore.

Central Staff—Jean L. Donovan.

Commissary Store—Diane S. Atkinson.

### Terminations:

Test—Leonard Semeyn, Mary Lou Norton.

Research—Nova Semeyn, Louis G. LaMarca, Julian L. Thompson.

Aviation Ordnance—Eunice A. Mansell, Arnold M. Matschke, Carl E. Burkey, Dale L. Shaw, Richmond A. Lewis, Paul A. Anderson.

Propellants & Explosives—Rita L. Haas, John R. Thompson, Sherman E. Butler, Squire P. Clemons, Raymond J. Eastman, Charles F. Wasson Jr.

Engineering—Homer O. Leslie, Donald C. Briggs, Pearl M. Lee, Ruth W. Faulkner, Robert E. Swallow.

Public Works—Calvin C. Grider, Leonard R. Britton, Lillian O. Elam, John W. Comstock.

Rocket Development—Roger Cressy.

Command Administration—Faith M. Rothford.

Central Staff—Donella Gaettig, Carroll M. Lambton, Gloria Coburn, Alta I. Sumpter.

Technical Information—Esther W. Arp, Earl T. Swallow, Mary G. Gaffney.

Community Affairs—Charles C. Kroeger.

Supply—Sire Ellis Jr.

## Give United Way, 'Once-and-for-all'

The United Fund is an annual campaign to gather the money donated by Valley citizens to social service agencies for health, welfare and recreation. United Fund encourages Valley-wide planning and cooperation among local agencies.

United Fund is managed by elected volunteer directors. Any citizen who contributes through United Fund is a member having voting privileges.

The purpose of United Fund is to bring together the many welfare agencies that would otherwise compete separately, through costly publicity, for your attention and dollars. This way, it serves twice over in providing a systematic and convenient once-and-for-all campaign, and again in relieving agency competition so that more of our money goes to work directly where it should.

It will take a lot of money to support effectively our United group of agencies for their working year of 1957. Pocket-money donations will not meet the greater obligations a United Fund places before us, nor will they earn the advantages offered. The campaign goal for United Fund this year is \$50,000, an amount which indicates the growing social maturity of our bustling desert community. Achieving this will require fair-share donation from every Valley wage earner of one day's pay.



FLAG FOOTBALL CHAMPS—First round of play in the local flag football league was won by the VX-5 team. Bottom row (l. to r.) are: Charles Ross, tackle, Andrew LeBlanc, halfback, Abuid Archuleta, middle-guard and co-captain, Claude Green, halfback, and Grover Davis, fullback. Middle row (l. to r.) are: Charles Ward, quarterback and co-captain, Robert Norris, halfback and coach, Thomas Mathes, halfback, Richard Griffin, center, Clyde Clason, end, and Jack Perry, end. Top row (l. to r.) are: Rocco Daddato, tackle, Jerome Hayden, end, James P. Burns, end, Ervin Reddick, tackle, Gerald Tichel, center, James Maurer, center, and James Johnson, fullback. Watch this team in the second round of play.

## VX-5 Declared Champions of First-Round Play In Station's Intra-Mural Flag Football League

VX-5 walked off with top honors and were proclaimed champions of first-round play in the Station's Intra-Mural Flag Football League. An unknown quantity at the beginning of the season, VX-5 trampled all competition and emerged with a perfect record—five wins and no losses.

GMTU, an unpredictable squad, took second place honors in the league with three wins, one loss and one tie. Experts predict that GMTU will have to be reckoned with in second-half play and rumor has it that this squad will be in strong contention for the second-round title.

Marine Barracks finished first-round play in third place with three wins and two losses. This squad suffered several casualties in first-round play and lost some close ones. Predictions are that Marine Barracks will be a much stronger squad in the second round and will not take a back seat to anyone.

Navy Barracks finished in fourth place with a two and two record; The Naval Air Facility squad was fifth with a one and four record and CMU was sixth with no wins and five losses. The records of the fifth and sixth place squads should not be taken as indicative of their ability. GMTU held VX-5 to a one touchdown difference and this was no mean feat since VX-5 had run rampant over

most of the opposition. Also the Naval Air Facility team has shown constant improvement and word has it that some upsets are in the making during second-round play.

Station residents turned out in good numbers to witness the first-round exhibitions and voiced their enthusiasm. Flag football unquestionably has made its mark here at NOTS and if it continues to receive the audience it has had in first-round play there is little doubt but that it will prove to be one of the more popular intra-mural sports.



### By Harold Smith and Bob Haley

The E.M. Club Halloween dance, which is to be held on Wednesday, October 31 in the Anchorage, will not be a costume affair as originally planned. However, the Anchorage will be decorated in the gay traditional Halloween motif.

For the man who believes in long range planning to be sure of his evening date there will be two dances during the month of November. The first will be on Saturday, Nov. 11 and the second on Saturday, Nov. 24.

Dress for these occasions is semi-formal, coat and tie for the men, and comparable dress for the ladies.

May Sponsor Basketball Team The E.M. Club will sponsor a basketball team for the coming season if enough men indicate that they would like to participate. However, each man should consider his own outfit first, and after such consideration he still desires to play for the club, he should contact the Club Manager.

The Club's softball team had a very successful season. It was undefeated for the season's Military team play and offered plenty of stiff competition for some of the old Station champions.

Bowling The Armed Forces Bowling League play is in full swing. Missiles and Sidewinders are tied for first place and the E.M. Club and GMTU are tied for second place.

Football The E.M. Club is the focal point for the rabid football fan on Saturday afternoons for the TV football game of the week. This Saturday it is Oklahoma vs. Notre Dame. So come on down and watch the game and enjoy the free sandwiches the Club is providing for the arm chair quarterbacks these Saturdays.



# What's Doing IN RECREATION

By Helen Michel, recreation director

The golf course has been in operation for approximately four months and has received a good amount of play since opening day June 30. With cooler weather and people back from vacations, it is anticipated that even more will take advantage of this opportunity.

The golf committee which was organized to start the golf course feels that the time has come to organize a club to be known as China Lake Golf Club. All persons who hold monthly memberships are eligible to participate in the formation of this club.

A meeting will be held tonight at 7 p.m. at the Community Center. At this time election of officers will be held. Several committees will be appointed: namely a greens committee, tournament committee, membership committee and rules committee.

It is urged that all persons who hold a membership will attend this meeting to unify the efforts of operating the China Lake Golf Club.

## NOTS Rec. Official Attends World Meet

The annual Recreation Society Conference and the International Recreation Association Congress met in Philadelphia, Pennsylvania, recently. Leaders in the field of recreation from many nations were in attendance.

Helen Michel, NOTS recreation director, attended sessions of both conferences. The armed forces section of the American Recreation Society conference was attended by approximately 400 military and professional civilian recreation leaders. A full schedule of business and program sessions dealt with problems, trends and future plans in military recreation.

Highlights of the meeting included addresses by Dr. Jackson Anderson, consultant in recreation, the American Association for Health, Physical Education and Recreation, whose subject was "The Need for Recreation in the lives of Americans." Dr. Jay B. Nash, College of Recreation, Physical and Health Education and Athletics, Brigham Young University, gave an address on "Philosophy of Leisure." Richard L. Neale, assistant publisher, *Sports Illustrated*, gave a talk on "Recreation Interests of the American People."

A panel of Special Services chiefs from Department of Navy, Army, Air Force, Marine Corps and Department of Defense discussed administration, management and control of special services and plans for the future.

An outstanding presentation was given by Morris L. Ernst, author of "Utopia 1976" on "New Sources of Energy, Leisure and World Culture." He has a dynamic approach to a program of leisure for all.

There were crafts in action, and exhibits on display, workshops in music and folk dancing, discussions on programs for teen agers, for the ill and handicapped, geriatric patients, family and church recreation, and sessions on industrial, state, and municipal recreational problems, programs and trends. More than 1800 professional people in all phases of recreation attended both conferences.

## Christian Science Lecture Slated Tomorrow Evening

How understanding Man's sonship with God solves problems of everyday living will be the topic of a free, public lecture on Christian Science to be given here tomorrow evening at 8 p.m. by W. Norman Cooper of Los Angeles, California.

Mr. Cooper, a member of the Christian Science Board of Lectureship, will speak in the Chapel Annex (white Quonset hut east of the Anchorage) under the auspices of the Christian Science Society at NOTS. His subject will be "Man's Sonship with God Revealed Through Christian Science."

Since WWII, Mr. Cooper has devoted his full time to the public practice of Christian Science healing. He became an authorized teacher of Christian Science in 1952.

Fair Share is one day's pay.



Starting Times: 6 and 8 p.m. daily  
Kiddies' Matinee (Special Movies)  
1 p.m. Saturday

TODAY OCT. 26

"THE BRAVE ONE" (100 Min.)  
Michael Ray, Joi Lansing

A straight forward story about a little Mexican boy who idolizes a bull he has raised from birth to the day he fights in the bull ring.

SHORT: "Ice Climbers" (8 Min.)

SAT. OCT. 27

"CHA CHA CHA BOOM" (72 Min.)  
Perez Prado, Mary Kaye Trio

A musical—see the sensational Cha Cha. SHORTS: "Candid Microphone" No. 3 (10 Min.) "Hot Stuff" (16 Min.)

MATINEE

"Abbott & Costello Meet the Killer" (84 Min.)  
SHORTS: "Rail Rodent" (7 Min.)

"Monster and the Ape" No. 4 (18 Min.)

SUN.-MON. OCT. 28-29

"THE KING AND I" (133 Min.)  
Deborah Kerr, Yul Brynner

The lavish and bouncy musical version of the Rodgers and Hammerstein Broadway hit. Excellent.

TUES. OCT. 30

AMATEUR SHOW  
Local talent,  
Sponsored by Public Works  
Station Theater  
7:00 p.m.

Admission  
50¢ Students and Service Men 75¢ Adults

WED. OCT. 31

"EAST OF EDEN" (115 Min.)  
James Dean, Julie Harris

A movie from the best seller.

THURS. NOV. 1

"FLIGHT TO HONG KONG" (89 Min.)  
Rory Calhoun, Dolores Donlan

The swift, violent, colorful type of gangster story that used to start and finish in the Chicago of the Capone era is brought forward in time and internationalized.

SHORTS: "Pluto at the Zoo" (7 Min.) "Asphalt Playground" (9 Min.)

## Job Opportunities

**Administrative Assistant, GS-9**, located in Engineering Department office staff. Duties of the incumbent will be of a general administrative nature, subordinate to a Supervisory Administrative Officer, GS-11.

In addition, assignments will be made in development and evaluation of programs for budget analysis and control; development of procedural changes in administrative policies in the field of Organization and Methods; special assignments as related to the management, administration, budgetary systems, process charting, forms and records controls, recurring reports and frequently touching upon technical aspects of the department and division activities.

An ability to make analyses in various management activities, write comprehensive reports and develop procedural changes is desirable. For further information call extensions 71393 or 71648.

**Administrative Officer, GS-11**. This position is located in Propellants & Explosives Department on the department staff. Call J. Newman, extension 72676.

**Personnel Clerk (General) (Typist), GS-5**. This position is located in Personnel Department, Personnel Operations Division, Personnel Service Branch No. 1. Call J. Newman, extension 72676.

**General Engineer, GS-11**. Position is that of Assistant Head, Pasadena Section Design and Engineering Branch, Engineering Division, Public Works Department. This section performs design and engineering services related to new construction, alterations and maintenance of public works, public utilities and technical facilities at the Naval Ordnance Test Station. Contact Dorothy Seaman, extension 103.

# News from Pasadena Annex



**FIVE-YEAR PIN RECIPIENTS**—First row (l. to r. above), Ralph E. Armitage, Henry W. Nichols, Kenneth F. Simmons, Francis A. Rivers, Howard C. Wheeler, Max J. Kline; Second row, Elizabeth L. Toth, Eva V. Young, Neona B. Ward, Margery S. Ross, Carl A. Caya, Jeannette A. Wanek, Mary K. Fritz, Sally Tompkins, Russell A. Nielsen, Lester M. Fryslic; third row, Richard Papke, Thomas G. Lang, Robert M. Walp, John T. Sinnette, John McCool, Clarence W. Spiekerman, William J. Schneider. Other five-year people not available for the photograph are listed below.



**TEN-YEAR SERVICE AWARDS**—Part of the group of eighteen Annex employees who received pins in recognition of ten years of service. Pictured above (l. to r.): John W. Southwell, Planning and Administration, UOD; Carl A. Jack, Supply; A. Brooks Poynter, Weapons Planning; Marguerite Watrous, Library; Richard J. Franz, Public Works; C. R. Nisewanger and Gerald G. Mosteller, both of UOD's Propulsion Division. An additional eleven employees who also received 10-yr. pins are listed below.

## DON'T STOP NOW!

Today is the closing day for pledges in the United Fund Drive at the Annex. Fine work has been done by the task team leaders, and great work will be done by the agencies to which we are making our contributions.

Vernon Hayes, chairman of the Drive, is well pleased with the results turned in to him last Tuesday by Charles Gerbracht, who is in charge of receiving and recording the pledges and contributions.

Contributions from individuals are averaging more than ten dollars each.

If you have not yet made your pledge, hunt up your solicitor and do it today.

## Christmas Chorus Rehearsals Begin

Ernie Burciaga was chosen to direct the NOTS Christmas Chorus at a meeting of the committee last Tuesday. James H. Jennison is chairman of the committee which was elected at the group's first meeting last Friday. Nadine Robinson will serve as secretary, and other members are Merton Welch, Octavia Whalen, and Betty Butler.

First rehearsal of the chorus, to which all singers are invited, will be held at the Boys' Club next Thursday from 12 to 1 p.m.

## Seal Beach Move Discussed At Annex All-Hands Meetings

A successful series of EMCO-sponsored all-hands meetings was concluded on Monday, October 15, with gatherings at Morris Dam and Long Beach. Foothill meetings were held on Thursday and Friday, October 12 and 13.

Foremost among the questions directed to top management by employees was the date of the projected move to Seal Beach.

Cdr. J. J. O'Brien, officer in charge, explained the various levels at which the proposal must be approved. He concluded that the earliest probable date for the actual move would be in the calendar year 1961.

### Delays Possible

There are many stages at which delays can occur. Cdr. O'Brien stated that the date of groundbreaking would precede the move by at least a full year, and recommended that employees wait until that time before taking any steps toward changing residence.

### Length-of-Service Pins

Pins were awarded to eighteen employees who have completed ten years of service at NOTS. In addition to the seven pictured above, they are: Walter L. Brown, P5544; Marion L. Kelly, P659; Stanley D. McDonald, P7930; Doreen J. Reddick, P1900; Carl I. Peters, Jr., P8000; Harold W. Thompson, P8026; Carl F. Endeward, P8042; Mabry Van Reed, P8084; Robert Larson, P8084; Yako Dragicevich, P8092; and Dom Veronda, P8093.

Forty-one five-year pins were awarded. In addition to the group which assembled for the photograph above, the recipients were: Florence C. Swope, Clifford Medlin, Wesley Potter, Douglas Griffith, Richard L. Mardiros, Harry L. Greene, Alice L. Maxwell, Edward B. Thomas, Louis E. Sandoval, Lamorn McDowell, Carl A. Blanchard, Michael A. Santeramo, Joseph Neustein, Ernest M. Scheuer, John B. LaBosky, Francis J. Hill, Jr., and Gaylord E. Francisco.

Give once and for all (year) the United Way.



**BLUEJACKET-OF-THE-MONTH**—Selected for this honor for the month of September was J. G. Breshears, SA, of the Long Beach Range. Breshears is a native of Wallowa, Oregon, and he enlisted in the Navy at San Diego in June, 1955.

Although striking for a gunner's mate rating, he is acting as a coxswain on the boats and performing excellent work. His selection was based on the following factors: proficiency in rate, general appearance, courtesy, conduct, and general attitude toward his duties.

# Lighted Giant 'U' Reminds Residents Of UF Campaign

(EDITOR'S NOTE: This United Fund Drive editorial was submitted by a student in Journalism 10-A under the Adult Education Program. It was selected for publication by Wayne C. Harsh, class instructor.)

By Hubert M. Ross

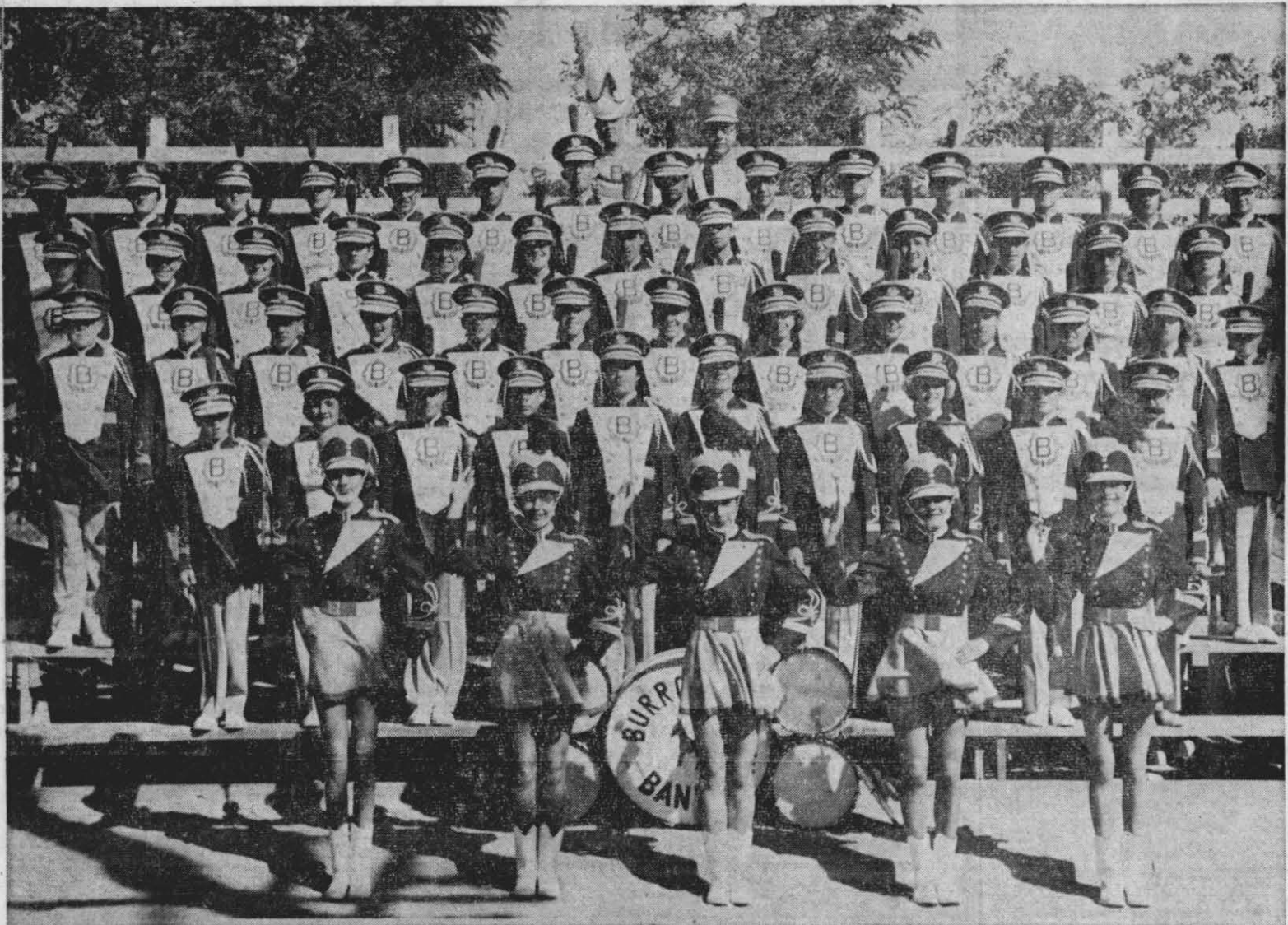
Looking to the mountains east of the station during the evening hours, residents of Indian Wells Valley will note a giant "U" outlined in lights. It is the symbol of the United Fund Drive, which will be under way from Oct. 26 through Nov. 9.

The Indian Wells Valley United Fund Drive is an incorporated, non-profit organization dedicated to the sole purpose of serving the community in areas of social welfare, health and recreation.

Replacing the Community Chest in 1954, the United Fund Drive has proved to be an effective means for consolidation of fund appeals to support six local agencies, five national organizations and 38 write-in agencies. The drive is designed to provide a wide field for individual choice in controlling the disposition of funds.

In the past a multitude of separate and unrelated fund drives resulted in costly competition and frequency of appeals. United contribution offers the solution to these problems and is instrumental in reducing administrative costs to a minimum level.

This year 550 volunteer lieutenants under the direction of President John Emery will call for United Fund contributions in the residential areas. When one of the volunteers calls on you, remember the brightly illuminated "U" on the mountain-side.



TO TAKE PART IN UF KICK-OFF—Majorettes, from the left, front row are Jill Curtis, Oleta Dial, Patsy Westfall, Justine Hallett, Sonja Tucker. Band members, second row from left are Tom Westcott, Jeanne Ligertwood, Robert LaRosa, Jack Palmer, Sandy Witt, James Curran, Carolyn Ridpath, Kay Tillitt, Donn Case, Mike Fullerton. Third row, from the left, Billy Reid, Paul Neipp, Neale Hyatt, Arline Torrey, Richard DeMoss, Barry Shilberg, John Pinney, Linda Dial, David Laffoon, Ronald LaRosa, Pat Pierce, Sybil Donaldson, James Roric. Fourth row, from the left, James Randolph, Sam Gregory, Pat Pruitt, Paul LaFleur, Dale Cottingham, Elaine Steinmetz, Layard Kirby, Don Zarzana, Calvin Joy, Loren Parks, Robert Florence, Allene Reeves, Marcia Bernhardt. Fifth row, from the left, Gene Fata, Sharon Steele, Claire Woodruff, Mary Ellen Smith, Thomas Hopps, Robert Appleton, Bruce Warr, James Horton, Vance Holley, Robert Ragsdale, Jay Tillitt, James Goulet, Celeste Neipp, Robert Holloway. At the top, David Carter, Drum Major, and George A. Carson, Director.

**China Lake Area United Fund Map**

In the next few days a United Fund Campaign worker will be calling on you for your United Fund contribution—give generously. If a worker does not call on you please contact the team captain for your area so that your contribution can be picked up. Team captains for areas four and nine had not been named at press time, however their names can be obtained Monday by calling Drive Chairman Jim Judin on Ext. 721309.

**1 JOHN LEWIS**

**2 E.A. SOPKE**

**3 ROBERT BLAISE**

**4 —**

**5 ROBT EMERSON**

**6 JOHN BOYLE**

**7 ROY ROGLIN**

**8 ROSE MERRIAM**

**9 —**

**WHERRY HOUSING**  
**RAY BECKER**