

China Lake Announces 'Mrs. Navy, 1956' Entry

Rosemary Jensen was announced today as having been judged as the Naval Ordnance Test Station candidate for Mrs. U. S. Navy, 1956. The contest is nationwide and is under the sponsorship of the Navy Fleet Reserve Association.

Alan D. Jensen, SA, USN, stationed at NOTS until three weeks ago, nominated his wife Rosemary before being assigned to the USS TOLEDO, Division O. I. (CA133) out of Long Beach. Rosemary is presently living with her parents, Mr. and Mrs. G. W. Keese at 318 Warner St., Ridgecrest.

Married servicemen were invited to nominate their wives as candidates, and the wives were required to submit letters in their own handwriting stating the reason why they are proud their husbands are in the Navy.

The following is Rosemary's letter: "I am very proud of my husband for having selected the Navy as his career. He and I both realize the wonderful advantages we are receiving would be impossible for us if he were not in the Navy.

"At the beginning of our marriage, we attempted to reach a definite decision about our future. We wanted most a home, children, and security. Realizing that my husband's interests were in the field of electronics and radar, we knew that we could not financially afford extensive training for him. My ability to earn is limited, and we did not have enough savings for him to attend expensive training studies in the electronics field.

"We then read everything available as to what the Navy offered that would fulfill our aims and requirements. We found that through a Navy career we could have a home, a family, and my husband could get the training he wanted most.

"He enlisted October 22, 1954 and will be eligible for retirement at the age of 38. How much more could we ask?

"I realize that during his career, we will never be a burden to him in the way of ill health, etc., because of the wonderful assistance provided to Navy families. Should an emergency arise that would necessitate his presence at home, I have been assured by his Commanding Officer that if at all possible, Alan would be sent home immediately.

"This assurance enables me to maintain a high morale during the times when it is necessary for us to be apart. It also makes it possible for me to write gay and encouraging letters which I consider an important contribution to his morale, thus enabling him to better perform his duties and allow him more time for concentration on his studies.

"Later in his career, we are both looking forward to overseas duty. We have read pamphlets and information compiled by the Navy Department regarding foreign stations. We both want to visit foreign lands, and since our Navy has stations in many parts of the world, we feel that before his retirement, we will have had the opportunity to see some of them. These are opportunities we could never afford while we are both still young except in the Navy.

"Aside from these reasons, and there are many more, there remains one thought of great importance to me. I once read that, "The Navy will always employ new weapons, new techniques and greater power to protect and defend the United States on the sea, under the sea, and



ROSEMARY JENSEN—NOTS candidate for Mrs. U. S. Navy contest.

in the air." This should mean much to every Navy wife.

"This knowledge is uppermost in my mind every time I see my husband in the uniform of the U. S. Navy. I feel a special pride because I realize that he is a part of this great defense program and doing his part for this great country. As a Navy wife, I sincerely hope that I will be able to be among those who 'also serve.'"

Diplomas Granted In Adult Education

Five Associate in Arts degrees from Bakersfield College and 25 diplomas from the Burroughs Evening High School were granted this semester, W. J. Shortt, director of

noticed recently. Receiving Associate in Arts degrees through the extension program offered at the Station are Frieda I. A. Martin, Carl A. Blanchard, Beatrice Ruth Hottes, Pasqual Mercado, and Frank Madrick.

Students who have earned high school diplomas this past year may pick up their diplomas in the Adult Education Office, Room 108, Training Building. Office hours for the month of July are July 2 through 13 from 8 to 11:30 a.m. The office will be closed for vacations from July 16 through July 27.

California Auto Influx Has Set New Record

California auto influx set a new quarterly record as 336,858 autos, carrying 846,821 passengers, entered the Golden State in 1956's first quarter, officials of the Automobile Club of Southern California reported today.

Although the State influx figure was up 1.8 per cent, the 204,773 out-of-State cars that entered at Southland points were slightly behind of Southern California report,

News from Pasadena Annex

Personnel Staff Serves All Divisions



PERSONNEL DIVISION STAFF MEMBERS—Pictured above, are: left to right, standing, Dorothy Seaman, Marion Kelly, Thadene Firman, Bernie Silver, Ellen O'Brien, Madge Davis, Fred Nathan, division head, Betty Butler; seated, Beatrice Moffett, Kathleen Theyken, and Priscilla Estes.

Personnel Head Plans Integrated Advisory System

The appointment of Frederick M. Nathan as head of the Personnel Division was confirmed this week. Nathan, who has been at the Annex since 1951, moves up from the position of deputy division head which he has held since January, 1955.

Nathan is a graduate of the City College of New York, where he also took a master's degree in business administration. He served an internship in personnel administration with the United Nations in 1948.

Under the so-called "generalist program," Nathan announced, the work of the personnel division is being organized so that each division at Pasadena Annex may receive integrated personnel advice.

The program is aimed at providing the line supervisor with one specific individual with whom he may consult on a variety of personnel problems, so that it will not be necessary for him to consult a different person for each different kind of problem.

At present, the development of the "generalist program" is at about the halfway mark, as shown by the assignments indicated below.

Bernie Silver, senior employment advisor, is in charge of professional recruitment and of training. He advises four divisions on matters of placement and employee relations. These divisions are P801, P804, P807, and P809.

Thadene Firman is senior classification and wage administration advisor.

Dorothy Seaman is general personnel advisor to P709, advisor on placement and employee relations to P2505 and P553, and is in charge of recruiting for all clerical positions of GS-4 rate and below.

Marion Kelly is general personnel advisor to P802, P808, and P805.

Priscilla Estes, senior employee relations advisor, is also general personnel advisor to P191, P659, and the miscellaneous groups.

Ellen O'Brien functions as Division secretary and classification clerk. Betty Butler and Madge Davis are placement clerks, Beatrice Moffett is record clerk, and Kathleen Theyken is a temporary clerk typist in the Division office.

Outstanding Rating Received



VIRGINIA OLSON—Head nurse at Pasadena Annex, receives her Certificate of Outstanding Performance from Captain W. T. Groner, Officer in Charge. This ceremony took place on the eve of Virginia's departure for a trip to Europe with a group of local nurses.

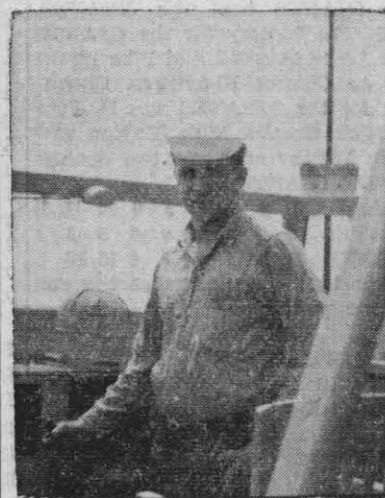
First to receive a certificate of outstanding performance for the past year was Virginia Olson, head nurse at Pasadena Annex.

As the only nurse at this Station, to which no doctor is attached, Miss Olson handles all the medical and administrative details for the more than 700 employees, as well as the necessary care of dependents of the military personnel.

"Miss Olson has been equal to any situation," her citation reads. "She comes into close personal contact with persons of all temperaments, often under conditions of stress. Her cheerful efficiency always calms the excited and reassures the worried."

Miss Olson received her certificate just before her departure last week for a three-month European holiday. Miss Marilou Wilson will be in charge of the dispensary until Miss Olson returns in October.

Bluejacket



Seaman Hobart

Election by civilian and Naval Personnel of the Long Beach Test Unit, William Charles Hobart, Seaman, was named "Annex Bluejacket-of-the-Month" for June.

Hobart, who is from San Francisco, received his initial training at San Diego. Since his assignment as coxswain of Torpedo Firing Boats at the Long Beach Range, he has proved his competence, reliability, and willingness to cooperate on any occasion. He is often called upon to assist civilian engineers in work outside his normal category.

On one occasion, he saved a very valuable torpedo which was sinking alongside the retrieving boat by diving into the water to save it with the assistance of the test conductor.

Annex Vacancies

General Engineer, GS-11. Assists in planning and designing all test facilities, special equipment, and supporting installations necessary to complete the development and research programs assigned by the Bureau of Ordnance to UOD. Assists outside agencies requesting specific research and development work related to underwater ordnance. The position includes planning, design and analysis of civil and structural facilities, mechanical test equipment, torpedo launchers and their installation, and instrumented test ranges. Contact Bernie Silver, Extension 110.

Rhymes of the Times
 POLICE YOUR OWN SMOKING
 DON'T WAIT FOR BANS
 PUT CIGARETTE BUTTS
 IN ASHTRAYS OR BUTT-CANS

New School Board Trustees Elected

Elections were held recently for members of the board of trustees for the China Lake Elementary School District.

Those elected were: Dr. Robert Olds, president; Dr. Earl Murray, secretary; and Archie W. Howell, clerk. The schedule of board meetings for the year was set for the first and third Tuesdays of each month in the superintendent's office at 7:30 p.m.

A new salary schedule has been drawn up for custodial and maintenance people which is in line with civil service pay. A few adjustments were made with teachers pay for those who qualified for higher rating. William G. Marsden was hired as custodian to replace Jack Wain.

